

# Kent County LEVY COURT



Serving Kent County with Pride

Community Newsletter & Parks, Recreation  
and Library Activity Guide

**Winter  
2023/2024**

*follow us!*



*'Like' us!*

**@KCLevyCourt**



# About the LEVY COURT

Levy Court is your County government. Kent County Levy Court is comprised of seven elected Commissioners: six are elected from the districts in which they reside, and the seventh is elected at-large to represent the entire county. The Commissioners serve at the will of the electorate and answer solely to their constituents. Since the Commissioners are elected officials, it is customary to refer to them with the designation of Honorable.

Levy Court responsibilities include: enacting planning and land use ordinances; providing parks and recreation facilities; establishing fees; providing emergency medical services; 911

communications; emergency management; approving sewer system construction; establishing the yearly tax rate and overseeing the county departments that support the mission of Levy Court. The Commissioners appoint a County Administrator who is responsible for managing the day-to-day operations of county government.

Levy Court offices are located at 555 Bay Road. Residents may call 744-2300 to reach a County Office.

For more information on Levy Court, please visit our website at [www.kentcountyde.gov](http://www.kentcountyde.gov).



**HON. TERRY L. PEPPER**  
President  
Commissioner At-Large  
302-697-9194



**HON. ALLAN F. ANGEL**  
Vice-President  
Commissioner 3rd District  
Committee: Administration  
302-382-6735



**HON. JOANNE MASTEN**  
Commissioner 1st District  
Committee:  
Planning Services  
302-653-6235



**HON. JEFFREY W. HALL**  
Commissioner 2nd District  
Committee:  
Finance Committee  
302-632-0757



**HON. ROBERT J. SCOTT**  
Commissioner: 4th District  
Committee:  
Public Safety  
302-270-5328



**HON. JODY SWEENEY**  
Commissioner 5th District  
Committee:  
Community Services  
302-943-7328



**HON. PAUL HERTZ**  
Commissioner 6th District  
Committee:  
Public Works  
302-382-9366

## About the ROW OFFICES

Kent County has four Row Officers: each of which is an elected official. Row Officers serve four year terms and each is empowered to manage their office. Each row office performs a distinct function within the County Government.

Row Officers are held accountable to the electorate and it is customary to refer to them with the designation of Honorable. These offices are open Monday through Friday from 8:00 A.M. to 5:00 P.M.

### REGISTER OF WILLS:

**Hon. Harold K. Brode**  
Harold.Brode@kentcountyde.gov  
(302) 744-2330

**Chief Deputy - Dianne M. Rager**  
Dianne.Rager@kentcountyde.gov  
(302) 744-2328

### RECORDER OF DEEDS:

**Hon. Eugenia Thornton**  
Eugenia.Thornton@kentcountyde.gov  
(302) 744-2321

**Deputy - Darin Dell**  
Darin.Dell@kentcountyde.gov  
(302) 744-2318

### CLERK OF THE PEACE:

**Hon. Brenda Wootten**  
Brenda.Wootten@kentcountyde.gov  
(302) 744-2346

**Deputy - Patricia A. Brown**  
Trish.Brown@kentcountyde.gov  
(302) 744-2347

### SHERIFF:

**Hon. Norman Barlow**  
Norman.Barlow@kentcountyde.gov  
(302) 736-2161

**Chief Deputy - Robert Daddio**  
Robert.Daddio@kentcountyde.gov  
(302) 736-2161

# Kent County PHONE DIRECTORY

**Kent County  
Administrative Complex  
555 Bay Road  
Dover, DE 19901**

Levy Court	744-2305
Assessment Office	744-2401
Building Permits & Inspections	744-2451
Code Enforcement	744-2452
Community Development	744-2480
Economic Development	678-3028
Engineering	744-2430
Facilities Management	744-2357
Finance	744-2386
Tax Section	744-2341
GIS/Mapping	744-2416
Information Technology	744-2365
Parks & Recreation	744-2495
Personnel	744-2310
Planning	744-2471

**Kent County Emergency Services Building  
911 Public Safety Boulevard  
Dover, DE 19901**

Emergency Communications	735-2200
Emergency Management	735-3465
Emergency Medical Services	735-2180

**Kent County Library  
497 South Red Haven Lane  
Dover, DE 19901**

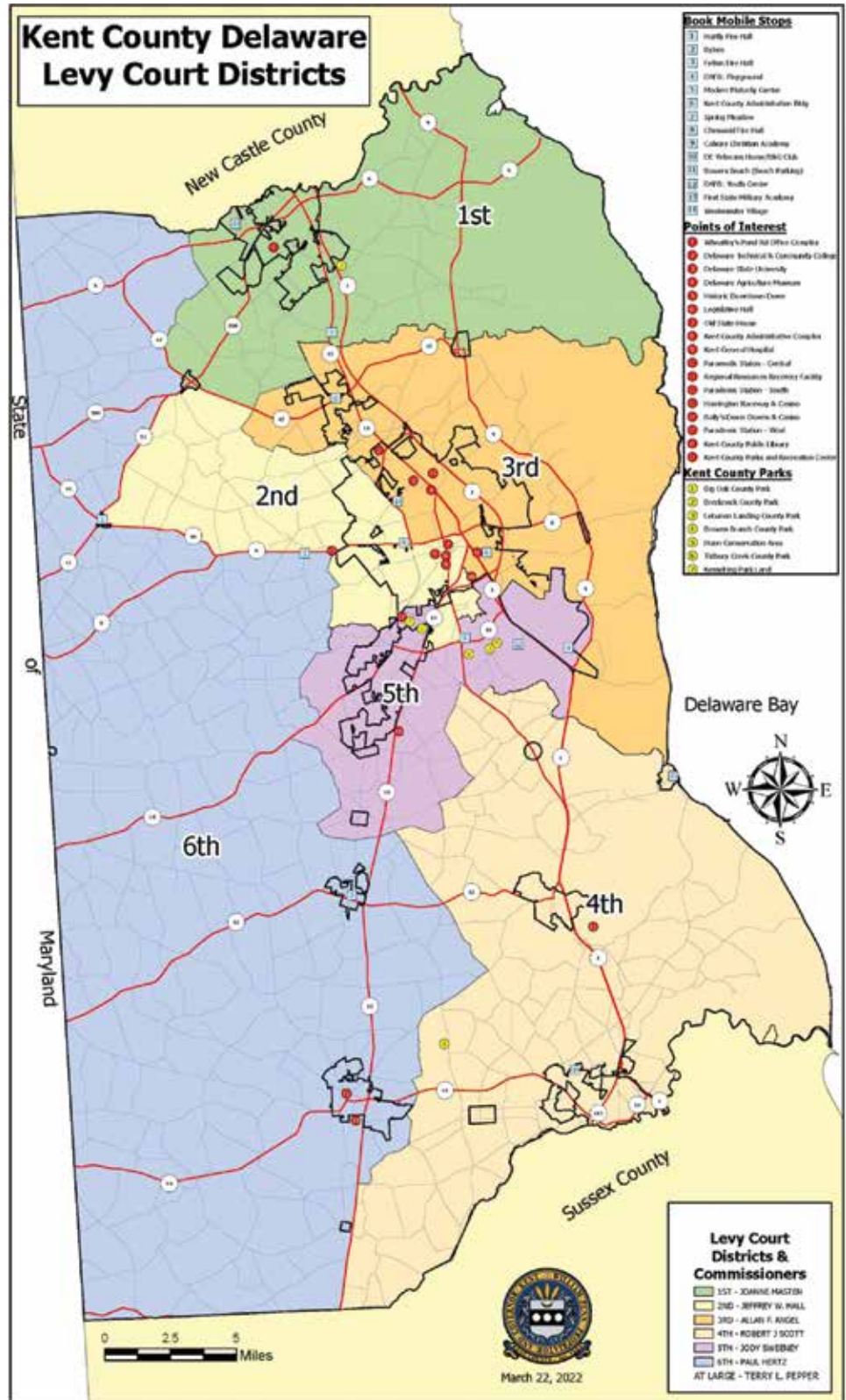
Library Services	744-1919
------------------	----------

**Kent County Parks and Recreation  
1683 New Burton Road  
Dover, DE 19904**

Main Number	744-2495
-------------	----------

**Kent County Wastewater Treatment Plant  
139 Milford Neck Road  
Milford, DE 19963**

Wastewater Facilities	335-6000
-----------------------	----------



# Kent County BUSINESS TOUR

The Kent Economic Partnership proudly welcomed an assembly of guests, including Legislators, community leaders, and business figures, to the Kent County Business Tour.

Among the attendees were, Senators Trey Paradee and Eric Buckson, and Representatives Bill Bush and Lyndon Yearick, along with members of the United States congressional staff.

This tour encompassed a blend of Kent County's thriving business landscape and its promising industrial hubs, offering a glimpse into the region's forthcoming business growth and development.

The spotlight was firmly on two remarkable enterprises: the legacy company, ILC Dover, renowned for its groundbreaking NASA space suit manufacturing, and the brand new, Delmarva Corrugated Packaging, North America's premier independent corrugated box plant.

The tour also ventured into the heart of Kent County's industrial future, encompassing sites such as Harrington Industrial Park, the transformative former Reichold site on Fork Branch

Road that is now owned by Stoltzfus LLC, Central Delaware Business Park, Garrison Oak Business Park, and the future Dover Logistics Site on Lafferty Lane.

Both Harrington Industrial Park and the former Reichold Site have recently secured the Site Readiness grant, poised to launch extensive site preparations and expedite the provision of essential utilities to cater to the needs of businesses.

These Site Readiness Grant Funds have jumpstarted the improvements to these sites, allowing them to attract future growth to the area.

The Garrison Oak Business Park and Central Delaware Business Park emerged as hotbeds of interest for an array of developers and enterprises, promising a vibrant economic horizon for the region.

The Garrison Oak Business Park has successfully closed deals or secured contracts for six out of the ten available lots, while the remaining four lots continue to generate significant interest.

Meanwhile, over at the Central Delaware Business Park, only seven sites remain

available, and they are actively drawing attention from both developers and businesses alike.

It has been two years since the last Kent County Business tour and attendees were impressed by the remarkable progress achieved by Central Delaware.

This tour left no doubt about Central Delaware's ability to foster a robust, thriving business environment for years to come.

The Kent Economic Part-

nership is the Economic Development Agency for Kent County, focusing on business attraction and retention programs, and promoting better employment opportunities for Central Delaware residents.

In support of economic development that creates and sustains a diverse business climate in Central Delaware, the Kent Economic Partnership is joined by municipal governments and the private sector to create a unified voice for the County.



Group picture of attendees in front of ILC.



Attendees get a tour of the Harrington Industrial Park.



The business tour included a stop at Delmarva Corrugated Packaging, a true Kent economic development success.

# KENT COUNTY HOLIDAY CALENDAR 2023

With one major holiday left in 2023, Kent County Levy Court will be closed December 25 and 26 for Christmas.

# PUBLIC WORKS CALENDAR

Yard Waste Collection for Kent County Garbage Districts will continue until the week of December 18th with the 22nd being the last day. Public Works will collect Christmas Trees the 2nd and 3rd weeks in January; January 8th and January 15th.

## 2024 HOLIDAY & TRASH COLLECTION SERVICES

	New Year's Day	Monday, January 1st	Trash Services, One Day Later — All Customers
	Martin Luther King Jr. Day	Monday, January 15th	
	Presidents Day	Monday, February 19th	
	Good Friday	Friday, March 29th	
	Memorial Day	Monday, May 27th	Trash Services, One Day Later — All Customers
	Juneteenth	Wednesday, June 19th	
	Independence Day	Thursday, July 4th	Trash Services, One Day Later — Thursday & Friday Customers
	Labor Day	Monday, September 2nd	Trash Services, One Day Later — All Customers
	Election Day	Tuesday, November 5th	
	Veterans Day	Monday, November 11th	
	Thanksgiving Day	Thursday, November 28th	Trash Services, One Day Later — Thursday & Friday Customers
	Day After Thanksgiving	Friday, November 29th	
	Christmas Day	Wednesday, December 25th	Trash Services, One Day Later — Wednesday, Thursday & Friday Customers
	Day After Christmas	Thursday, December 26th	
	New Year's Day 2025	Wednesday, January 1st	Trash Services, One Day Later — Wednesday, Thursday & Friday Customers

# Property Tax CREDITS AND EXEMPTIONS ANNOUNCEMENT

The property tax relief enrollment period for seniors, veterans and those with disabilities is upon us, now through April 30, 2024. Find out more about the three ways you can decrease your tax bill below.

## Combination of credits:

	Senior School Property Tax Credit	School Property Tax Credit for Veterans	Elderly/Disability Property Tax Exemption
Senior School Property Tax Credit		No	Yes
School Property Tax Credit for Veterans	No		No
Elderly/Disability Property Tax Exemption	Yes	No	

\*Among the three property tax relief programs, residents can't receive the Elderly and Disability Exemption with the School Property Tax Credit for Disabled Veterans but can receive the Elderly and Disability Exemption with the Senior School Property Tax Credit. Also note, *of the two school property tax credits*, (Senior School Property Tax Credit and School Property Tax Credit for Disabled Veterans) residents can only receive one or the other, not both.

## Elderly/Disability PROPERTY TAX EXEMPTION

Kent County residents 65 years or older or those who will be 65 by May 31, 2023; **and/or** persons who are 100% disabled can apply for the Annual Elderly/Disability Tax Exemption. To qualify, income and residency requirements must also be met. *Please note: Disabled applicants must be able to document total disability. Because this exemption is income contingent, applicants must apply annually.*

The application deadline is April 30th.

Completed applications and subsequent verification forms must be received by the Board of Assessment at the Kent County Administrative Complex no later than April 30, 2024. The address is: Kent County Levy Court; Board of Assessment; 555 Bay Road; Dover, DE 19901.

### Requirements for the Elderly and Disability Exemption:

- The income limit for single applicants is \$18,000, and for married applicants \$24,750. Social Security is not counted toward income.
- Applicants are required to include a copy of their 2022 Federal Income Tax Return with their application.
- A copy of a Delaware driver's license or a State Identifica-

tion Card is required to verify residency and age.

- Delaware Residents of five or more years, who have lived on their property for at least one year prior to April 30, 2024, may qualify for the Elderly/Disability Tax Exemption credit.
- Title to the property for which the exemption is sought must be in the name of the applicant, and/or the applicant and applicant's spouse, or a revocable grantor trust with the applicant listed as a trustee, as reflected in the official records of the county.

### Additional Disability Requirements:

- Applicant must provide a Physician Statement of Disability signed by a licensed physician certifying that the applicant is 100% disabled.
- A Social Security award letter stating 100% disability can replace the Physician Statement of Disability.

***As the applications to date have not been uploaded to our website, you may contact our Assessment office at 302-744-2401 to put your name on a waiting list and you will be contacted when the application becomes available.***

# Kent County Senior School Property Tax Credits and School Property Tax FOR DISABLED VETERANS

There are two school property tax credits in which Kent County property owners can apply: the **Senior School Property Tax Credit**, or the **Property Tax Credit for Disabled Veterans**. The deadline to apply is April 30th.

If you are currently enrolled in one of these programs, you will not need to reapply. Please note, residents cannot receive both the Senior School Credit AND the School Property Tax Credit for Veterans.

**Senior School Property Tax Credit** - Homeowners age 65 or over are eligible for a tax credit against regular school property taxes of 50 percent (up to \$500). This credit may only be used against property taxes on primary residences.

Residency and other requirements for the **Senior School Property Tax** credit may be found at: <https://finance.delaware.gov/senior-relief/>

For a **Senior School Property Tax** application, visit: <https://>

[financefiles.delaware.gov/docs/ssptc\\_app.pdf](https://financefiles.delaware.gov/docs/ssptc_app.pdf)

**School Property Tax Credit for Disabled Veterans** - Disabled Veterans must receive 100% disability compensation due to service-connected, permanent and total disability based on individual unemployability or a 100% disability rating from the U.S. Department of Veteran Affairs (VA) and have held legal domicile in Delaware for the past 3 years. Applicants are required to include a copy of their 2023 Federal Income Tax Return and a copy of their 2023 Delaware State Tax Return with their application.

Residency and other requirements and the application for the School Property Tax Credit for Disabled Veterans may be found at: [https://financefiles.delaware.gov/docs/DVP-TAX\\_2021-01\\_2PaperInteractive.pdf](https://financefiles.delaware.gov/docs/DVP-TAX_2021-01_2PaperInteractive.pdf)

**Again, as previously noted, residents can only receive one or the other of the school property tax credits, not both.**

## Meet Kent County's CORNHOLE CHAMPION

Most of us at the County know April Durham loves to play cornhole. She's been playing since 2015, which is also the year that it became a sport and the American Cornhole League was established. Hammy, as she is called, is known throughout the county for her great cornhole skills.

She plays cornhole whenever she can, including during her lunch break. She's also a member of two Cornhole leagues in the state, the DE Baggers a Kent County/Sussex County league, and Vikings Cornhole out of Townsend, Delaware. Three years ago, Hammy and her partner, Jeff Corrigan took first place in a Doubles round in the State Championship. That same tournament, she took first place in the Women's Single category. On October 3, 2023, she won second place in a blind draw, a unique tournament format where players enter as singles and get partnered into doubles. It's called a "blind" draw

because you don't know who you'll get as a partner.

When asked if she planned to go professional, she said she would, but the travel gets expensive and at that level it takes sponsorship, money and time.

April can tell you just about anything you need to know about Cornhole, from pellet bags to corn bags and how the powder from the bags and the elements, water, and humidity effect the board.

If you want to see April light up, ask her anything about cornhole, and the next time you see her, give her a big Congratulations!



# Commissioners clear concerns about MORTGAGE FRAUD NOTIFICATION ALERTS

There's been quite a bit of buzz about seller impersonation fraud in the County, and Levy Court Commissioners want to make clear what can and can't be done through the Kent County Levy Court. Seller impersonation fraud is a type of real estate fraud in which a scammer impersonates the owner of a property and attempts to sell it.

Scammers often target vacant land and other properties that are not actively being marketed. They may also target properties that are owned by elderly or out-of-state homeowners, who may be less likely to be aware of the scam.

Through the Recorder of Deeds Office residents can enroll in a Notification service, which will alert a property owner that there has been a change to their mortgage deed, and that's the extent of the Levy Court's involvement. Commissioners want to make clear that notification does not stop the fraud.

After the fraud has taken place, a resident would have to retain an attorney to help remedy the problem, assuming that the theft has been caught within a timely manner; and that's where the fraud alert notification system is very helpful.

Sixth District Levy Court Commissioner, Paul Hertz said, "I'm not against the program, in fact, I encourage you to get it so that at least you are alerted when there is a filing on your deed so that you can get a lawyer. But I want our residents to know that the notification system does not stop fraud. It only alerts you after the deed has changed hands and allows you to fix the problem."

There have been very few cases of seller impersonation in Delaware. Kent County Association of Realtors President, Bobbi Slagle recalled a recent incident from members alerting leadership to attempted seller impersonation within the City of Dover.

She said, "the Realtors were informed enough to recognize the red

flags prior to the listing ever being accepted...there was another attempt outside of the City of Dover that did make it to the market after the impersonator provided fraudulent identification to the listing realtor." Fortunately, that scam failed.

Fifth District Commissioner, George "Jody" Sweeney said, "Seller impersonation or deed theft is a very rare occurrence throughout the nation. Purchasing insurance from a third-party against identity theft is very expensive. Notification Services, such as the one offered for free by Kent County, does not provide insurance against nor prevent identity theft, but may be a deterrent against those wishing to do harm against those who own property in our County."

Ms. Slagle mentioned her appreciation of the timely communications and education received from the Recorder of Deeds Office and Eugenia Thornton, and concluded by saying, "scammers will always find another way to scam, unfortunately. This software may not prevent the scam, but it will allow for very timely discovery and in turn, much easier correction of a fraudulent recording."

Following are some red flags that may indicate seller impersonation fraud:

- The seller only communicates via email or text message and refuses to meet in person or appear on video call.
- The seller demands a quick sale and is willing to take a lowball offer.
- The seller does not have proper identification.
- The seller tries to use their own notary (the "notary" of course is part of the fraud).
- The seller offers incentives or is willing to cut corners for a quicker closing.

## Grand Opening for one of many new Central Delaware HABITAT FOR HUMANITY HOMES IN CENTRAL DOVER

On a hot August afternoon, Levy Court Vice President Allan Angel and City of Dover Councilman Fred Neil welcome a new homeowner into their respective districts. The Jenkins family are now residents of the Third Levy Court District and members of the Central Delaware Habitat for Humanity family. Congratulations!





# Levy Court Commissioners Approve ACCESSORY DWELLING UNIT ORDINANCE

Given the County's aging community, longer life span, and increasing costs of elderly care, the Levy Court took a proactive approach to addressing these concerns. On September 26th, Levy Court Commissioners adopted an ordinance that permits an accessory dwelling unit on all residential lots subject to certain conditions.

Commenting on the value of the new ordinance, Second District Commissioner, Jeff Hall said, "the ordinance should increase our housing stock without developing out into agricultural areas and that helps generate tax revenue without the need to raise taxes."

The ordinance creates a new chapter 101, of the Kent County Code specific to accessory dwelling units, and removes accessory dwelling units from Chapter 205, of the Kent County Code, Zoning.

Levy Court Commissioner, Joanne Masten of the First District was satisfied with the outcome of the unanimous approval and stated, "I was very pleased that my fellow commissioners understand and supported an ordinance to support Accessory Dwelling Units. For many years we have permitted them through conditional use. Now, that process is no longer required.

Kent County has permitted accessory apartments (attached to the principal dwelling) since 1985 and accessory cottages (detached units on a parcel) since 2011. One hundred sixty accessory dwelling units have been approved to date and there are no code enforcement violations associated with any of the subject properties.

"The County's new Accessory Dwelling Unit ordinance is so important with so many of our seniors wanting to age-in-place and families needing options," said Hall.

Highlights of what the new ordinance will and will not allow are as follows:

1. Permits accessory dwelling units in all residential zoning districts.
2. Prohibits the use of manufactured homes as an accessory dwelling unit.
3. Maintains the requirement that one unit be owner occupied.
4. Limits each property to one accessory dwelling unit.

5. Eliminates the requirement for adjacent property owner notification.

6. Limits the size of the accessory dwelling unit to 50% of the floor area of the principal dwelling unit.

7. Requires accessory cottages to be constructed on a slab or crawl space.

8. Requires accessory cottages to be placed behind the principal structure and

maintain one-half of the principal structure's side and rear setbacks.

9. Limits total lot coverage (impervious cover) to fifty (50) percent.

## Welcome! Come On In

**Accessory dwelling units are a needed housing option for people of all ages**

We know from surveys by AARP and others that a majority of Americans prefer to live in walkable neighborhoods that offer a mix of housing and transportation options and are close to jobs, schools, shopping, entertainment and parks.

In fact, in the 2021 AARP Home and Community Preferences Survey, adults age 18 or older who would consider creating an ADU said they'd do so in order to:

- provide a home for a loved one in need of care (86%)
- provide housing for relatives or friends (86%)
- have a space for guests (82%)
- create a place for a caregiver to stay (74%)
- increase the value of their home (69%)
- feel safer by having someone living nearby (67%)
- earn extra income from renting to a tenant (63%)

These preferences — coupled with the rapid aging of the United States' population overall, the decrease in households with children and the national housing shortage — will continue to boost the demand for smaller homes and affordable, quality rental housing.

Since ADUs make use of the existing infrastructure and housing stock, they're also environmentally friendly and respectful of a neighborhood's pace and style. An increasing number of towns, cities, counties and entire states have been adapting their zoning or housing laws to make it easier for homeowners to create ADUs. ■

**As small houses or apartments that exist on the same property lot as a single-family residence, accessory dwelling units — or ADUs — play a major role in serving a national housing need.**

This traditional home type is reemerging as an affordable and flexible housing option that meets the needs of older adults and young families alike.



DETACHED



ATTACHED



INTERIOR (UPPER LEVEL)



INTERIOR (LOWER LEVEL)



ABOVE GARAGE



GARAGE CONVERSION

▲ Accessory dwelling units (or ADUs) come in many shapes and styles.

# Employees of the Month

## KEVIN S. SCOTT

### JULY 2023



**Kevin S. Scott**  
Administration  
Department

Kent County Department Heads have selected KEVIN S. SCOTT from the Administration Department as the July 2023 Employee of the Month.

Kevin is a Computer Programmer II in the Information Technology Office and started with Kent County in August 2019. Kevin holds a bachelor's degree in information resources management from Wilmington University and previously worked for 21 years with Playtex/Energizer Holdings, later known as Edgewell Personal Care in Dover. Before that he worked in the basement of the Robert W. O'Brien Building for 8 years as a programmer for SCT, the former data processing contractor for Kent County.

His primary duties include providing high-level professional com-

puter programming, writing and developing complex computer code, and providing support for advanced computer applications and user training.

Kevin is described as detail oriented and thorough in his work. He quickly analyzes software issues, identifies the specific problem, and implements solutions. He is also a great resource for guidance and training the less experienced programming staff in the office.

According to Information Technology Director Joseph Simmons, "As a Tyler Munis ERP project team member, Kevin has been a tremendous asset in supporting the required data conversions. Recently during an especially critical time converting the Chart of Accounts, Kevin worked several weekends assisting Finance Director Susan Durham with various programming issues arising during the effort. He is a dedicated employee that gets the job done as a true Team Player."

Congratulations Kevin on a job well done!

## JAMIE L. FENSKE

### AUGUST 2023



**Jamie L. Fenske**  
Department of  
Planning Services

Kent County Department Heads have selected JAMIE L. FENSKE from the Department of Planning Services as the August 2023 Employee of the Month.

Jamie is a Planner I in the Planning office and started with Kent County on December 10, 2019, after nearly 7 years as a Land Use Administrator with the Town of Camden. She began her career in local government in 2005 as a Billing Clerk for the Town of Smyrna, later transitioning to the City of Dover.

Her primary duties include reviewing and processing planning applications, which contain plats, site plans, subdivision plans, permits, conditional use and rezoning requests; re-

searching, updating, and maintaining the County's Comprehensive Plan and land development regulations; preparing recommendation reports and managing the variance hearings as the primary staff representative for the Board of Adjustment.

According to Planning Services Director Sarah Keifer, "For several months, Jamie was the only Planner working in her section, but her work ethic and productivity never faltered and neither did her good humor which is just as appreciated. We regularly receive cards and comments praising Jamie's courteous and pleasant demeanor which helps alleviate any constituent confusion during the planning application process. Her willingness to go above and beyond to research concerns and provide timely and accurate responses are only a few of her many strengths. We're lucky to have such an asset in our department."

Congratulations Jamie on a job well done!

## ANDREW E. HINKSON

### SEPTEMBER 2023



**Andrew E. Hinkson**  
Department of  
Administration

Kent County Department Heads have selected ANDREW E. HINKSON from the Department of Administration as the September 2023 Employee of the Month.

Andrew is a Computer Programmer I in the Information Technology office and started with Kent County on April 25, 2022, after nearly 6 years as a Programmer/Code Analyst with CloudScale365, Inc., a managed I.T. services organization offering cloud, hosting, security, and business continuity solutions.

His primary duties include writing and developing complex computer code, providing support for advanced computer applications and user training, identifying issues within

software code and implementing operational solutions, and monitoring computer program productivity and performance.

With the recent computer network intrusion, Andrew's years of experience proved essential in the County's response.

He along with all of the I.T. team members worked tirelessly with the incident response personnel to isolate the malware and rebuild the system to eliminate the threat. His calm demeanor and leadership during the early hours of the containment effort inspired his coworkers.

According to Information Technology Director Joe Simmons, "Andrew consistently goes above and beyond in his role. His performance speaks volumes about his commitment to excellence and his ability to consistently achieve outstanding results. Qualities that truly set Andrew apart are his remarkable teamwork and collaboration skills. He has a unique ability to solve complex problems in a pinch and the willingness to help colleagues to resolve user issues."

Congratulations Andrew on a job well done!

# Three First Responders HONORED FOR ACTS OF HEROISM

Levy Court Commissioners honored two Firefighters/Emergency Medical Technicians and a Delaware State Trooper on Tuesday, October 10, 2023. They received the Kent County Life Saving Award for their heroic response to a motor vehicle collision that occurred on Friday February 24, 2023. On that date at 7:29 p.m., the Magnolia Volunteer Fire Company and mutual aid companies responded to a motor vehicle collision with vehicles reported on fire and entrapment at Bay Road and Trap Shooters Road in Magnolia.

“It’s always a pleasure to bestow this award to our own,” said Levy Court President, Terry Pepper.

Within two minutes, a Basic Life Support Unit arrived on the scene with Firefighter/Emergency Medical Technicians Joshua Norris and Lindsay Adams. As Adams exited the emergency unit, she advised Kent Center of a two-vehicle motor vehicle collision with one vehicle fully involved with an occupant still believed to be inside and the second vehicle 1/2-3/4 involved with a trapped driver.

As Adams was giving her report to Kent Center, Norris grabbed the fire extinguisher from their unit and made his way up to the second vehicle with Adams. As they approached the second vehicle, Adams noticed that the driver was trapped, conscious and verbal.

At this time there was heavy fire in the rear portion of the vehicle with fire rapidly making its way to the front of the passenger compartment towards the driver. With no protective gear and no regards to her personal safety, Adams entered the passenger side of the vehicle and initiated patient contact and attempted to free him with the assistance of Delaware State Trooper Thomas Catalfano (Troop 3) and an unknown bystander.

Meanwhile, Norris was discharging the fire extinguisher into the vehicle to keep the fire at bay in conjunction with the rescue attempt. Seconds later, it is believed that the fuel tank had ruptured intensifying the fire and stunning Adams. It was at this time Trooper Catalfano and the bystander rapidly removed Adams from the vehicle to safety. Fire was then noticed advancing up the outside of the vehicle into the driver’s side window. Norris changed positions to the driver’s side and began to knock down the fire and protect the trapped driver. Norris then again repositioned to the passenger side of the vehicle where he discharged the remainder of the contents of the extinguisher into the vehicle.

At the same time Trooper Catalfano without regard for his own safety entered the burning vehicle and was able to free the driver and rapidly remove him while noticing that the patient’s clothing was on fire entirely up his left side and back.



**Pictured from left to right: Ken Decker, Paul Hertz, Jody Sweeney, Josh Norris, Terry Pepper, Lindsay Adams, Allan Angel, Joanne Masten, Robert Scott, Kevin Sipple, and Magnolia Fire Chief, Ryan Buff**

He was placed on the ground and rolled around, and a piece of clothing was used to smother the flames on the patient.

Simultaneously a handline was placed in service off Rescue 55 and the nozzleman placed the stream on a modified fog pattern and sprayed the patient and rescuers briefly to extinguish the vehicle fire. At this point Norris began patient care and Kent County Paramedic Jennifer Sweetman arrived and began advanced life support interventions. During the time of this rescue Adams discovered another victim believed to be the passenger of the same vehicle lying on the ground in the field away from the car. After having sustained burns to her arms, Adams still rendered care to this patient until the second basic lifesaving unit arrived and assumed care. Adams then returned to the original patient and assisted her partner with care.

A stretcher was obtained by a firefighter and taken to the patient being treated. Immediate care was continued by Adams and Norris as well as Kent County Paramedics Jennifer Sweetman and Ken Kelly. With an extended ETA of DSP aviation, it was decided to rapidly transport the patient by ground to Bayhealth Kent Campus. Continuous and constant patient care was provided throughout the transport and upon arrival at Bayhealth. The patient was conscious and speaking with ED staff.

If it had not been for the selfless actions taken by Adams, Norris and Trooper Catalfano as well as the unidentified bystander coupled with the immediate patient care given by Emergency Medical Service responders, then the patient would have undoubtedly perished in the vehicle on scene. The actions portrayed during this rescue were nothing less than heroic and the pristine teamwork was inspiring. These actions are of the highest standards of the Public Safety field and a display of complete selflessness of these individuals and their commitment to serve their community. These individuals are a credit to themselves, their department, and their noble profession.

# KENT COUNTY LEVY COURT, COMMUNITY SERVICES DEPARTMENT

## Upcoming Programs and Activities for Recreation, Parks, and Libraries



## Winter 2023/2024

### KENT COUNTY PARKS AND RECREATION & KENT COUNTY RECREATION CENTER

1683 New Burton Rd.  
Dover, DE 19904

Office Hours:  
Monday – Friday,  
8:00 a.m. – 5:00 p.m.  
Phone: 744-2495  
Email:

[ParksRec@KentCountyDE.gov](mailto:ParksRec@KentCountyDE.gov)

[www.KentCountyDE.gov](http://www.KentCountyDE.gov)

### Parks and Recreation Commission

Kevin Zimmerman, Chairman	4th District
John Stant III, Vice Chairman	2nd District
Walter Carroll	6th District
Ed Coker	1st District
James E. Long	5th District
Brian J. Michalski	At Large
Walter Waite, Jr.	3rd District

### Mission Statement:

Our mission is to plan, promote and develop recreational facilities and activities consistent with the needs of all Kent County residents for now and the future.

### Commission Goals:

1. To promote the health, welfare and safety of all recreational participants
2. To monitor recreational facilities and programs
3. To study and identify needed recreational facilities and services
4. To support the Park and Recreation Division in serving all Kent Countians
5. To fulfill responsibilities delegated by Kent County Levy Court under Article III of the Parks and Recreation Commission Bylaws
6. To protect and conserve natural resources
7. To promote an awareness of public recreational facilities in Kent County
8. To incorporate technological resources into the County recreational planning and delivery system
9. To promote and develop Greenways as recreational resources
10. To function as a recreational advocate on behalf of the population of Kent County
11. To work in conjunction with other agencies to enhance recreational resources
12. To expand recreational and leisure activities
13. To insure compliance with provisions for open space, preservation and management
14. To identify and recommend funding sources that support parks and recreation opportunities

Accepted by Kent County Levy Court 8/22/2000

# ARTS & CRAFTS

## ART 101

Ages: 7 – 10 Fee: \$100 (Includes all materials)  
Days: Sat Hours: 1:00 – 3:00 p.m.  
Sess: Feb 10 – Mar 16 AC#ART101210

*The Dover Art League, 21 W. Loockerman St., Dover.* This course is designed to introduce mixed media techniques through a diverse set of mediums such as textured acrylic, clay, watercolor, and recyclables. During this 6-week class, students will work hands-on gaining creativity, inspiration, and confidence. Students will be able to share their ideas and inspiration with their peers. At the end of this course, students will leave with a variety of pieces to show their family and friends. \*Dress: Wear clothes you can get messy in! Minimum of 5, maximum of 15. Instructor: Olivia Jones.

## BEGINNER QUILTING – HEART AND NINE PATCH

Ages: 16 & up Fee: \$78 (Includes pattern)  
Days: Sat Hours: 3:00 – 6:00 p.m.  
Sess: Feb 10 – Mar 16 AC#BQUILT210  
(No class 2/17)

*Delaware Sewing Center, Rodney Village Shopping Center, Dover.* What says love better than hearts! Combine straight set nine-patch blocks and appliqued hearts. Participants will learn freezer paper applique by hand and basic machine pieced nine-patch. Then add a border or two and you will have a quilt top. You will finish your quilt top using basic machine quilting and then binding. Maximum of 8. Please pick up supply list at Delaware Sewing Center before class. Fabric will need to be washed before class. For more information and a list of supplies, call instructor Crystal Sweeney at 302-674-9030.

## BEGINNER WATERCOLOR

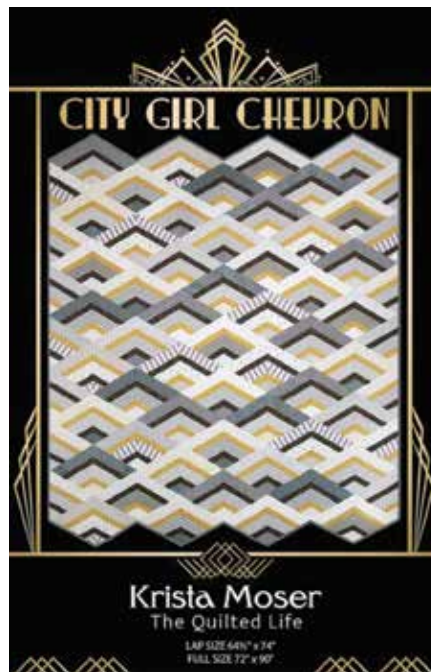
Ages: 16+ Fee: \$125 (Includes materials)  
Days: Sun Hours: 1:00 – 4:00 p.m.  
Sess: Mar 3 – Mar 24 AC#BWATERC303

*The Dover Art League, 21 W. Loockerman St., Dover.* Students will learn the basics of this unique medium, one of the most useful learning tools for virtually all artistic practices. They will explore the fundamentals of art and design through implementation of skills related to brush and wash techniques, color mixing, planning and observation. Students will learn about supplies, paper, and brush preparations. Students will learn various techniques such as wet to dry, color mixing, washes, and textures as well as the importance of whites, lights, and darks. They will then use their skills to engage with fundamental concepts in art and design. Projects will include several landscapes, several still life scenes and abstract works. Minimum of 5, maximum of 15. Instructor: Aaron Hoffer.

## CITY GIRL CHEVRON QUILT

Ages: 16 & up Fee: \$75 (Includes pattern)  
Days: Tue Hours: 1:00 – 6:00 p.m.  
Sess: Mar 19 & Apr 2 AC#CGCQUILT319

*Delaware Sewing Center, Rodney Village Shopping Center, Dover.* Intermediate Sewer. Do you want to make a Chevron Quilt, but need a little more pizzazz than the tried and true? This fun take gives you the option of using multiple color combinations in one quilt. Use gold accent strips to make these Chevron diamonds sparkle or lay out your diamonds light to dark for an ombre effect. This quilt is entirely strip pieced and foolproof. No fussy piecing techniques. If you are just getting into quilting, this would be a good next step on your new quilting journey. For more information and a list of supplies, call instructor Crystal Sweeney at 302-674-9030.



## CRAFTING CARTOONS

Ages: 8 – 12 Fee: \$75  
Day: Sat Hours: 10:00 a.m. – 12:00 noon  
Sess: Feb 10 – Mar 16 AC#CCRAFT210

*The Dover Art League, 21 W. Loockerman St., Dover.* Learn how to draw your favorite characters throughout fiction, cinema, television, literature, etc. as we choose a new character each week to construct! A beginner's guide to the building blocks, fundamentals, principles, and foundations of drawing in general and more specifically how to draw characters! Utilizing techniques, learning about different artists across various mediums (children's books, animation, comic books, etc.), and applying them to pencil and paper, students will learn how to create their own characters as they apply what they learn throughout each class. Minimum of 5, maximum of 15. Instructor: Brad Dotson.

## CREATE WITH PROCREATE: AN INTRO TO DIGITAL ART

Ages: 13 & up Fee: \$75  
Day: Mon Hours: 5:00 – 7:00 p.m.  
Sess: Feb 5 – Feb 26 AC#CRDIGART205

*The Dover Art League, 21 W. Loockerman St., Dover.* The focus of this class is to provide a basic introduction to the program Procreate, therefore enabling participants to create their own digital art. Students must have an iPad functioning on iOS 15.4.1 or later, and an Apple Pencil or equivalent stylus. Students will complete three small projects and one final project using Procreate; the three projects will be created in-class, while the fourth will be completed at the participant's leisure and will be brought to the final class. Each small project will teach participants new skills that will be built upon each week. Examples of the skills that will be taught are: how to use layers, how to export/import projects, how to use masks, how to create sticker(s), etc. Sketching and line art skills will be improved as a result of these projects. Since this program serves to provide a basic introduction, projects will be taught in an illustration style comparable to Disney or other 2D animation and will focus on landscapes, persons, and animals as the subject(s) of said projects. Minimum of 5, maximum of 10. Instructor: Olivia Figueroa. \*Students must have an iPad, a stylus and will have to purchase ProCreate from the app store (priced at \$12.99). These are not included in the course fee.

## DRAWING FOR BEGINNERS

Ages: 16+ Fee: \$100 (Includes all materials)  
Days: Sun Hours: 1:00 – 4:00 p.m.  
Sess: Jan 28 – Feb 18 AC#DRAWBEG128

*The Dover Art League, 21 W. Loockerman St., Dover.* Drawing is a foundational skill for virtually all other visual artistic disciplines. This class is an introduction and exploration of the fundamentals of drawing methods and materials. Students will learn the importance and use of gesture, contour, line weight, positive and negative spaces, linear perspective, shading, measurement techniques, and composition. Projects include a still life, a room perspective and a portrait. Minimum of 5, maximum of 10. Instructor: Aaron Hoffer.



# ARTS & CRAFTS

# EDUCATIONAL

## PHOTO EDITING & PRINTING WORKSHOP

Ages: 16+ Fee: \$80  
 Days: Fri Hours: 5:00 – 8:00 p.m.  
 Sat & Sun Hours: 10:00 a.m. – 1:00 p.m.  
 Sess: Feb 2, Feb 3, & Feb 4  
 AC#PHOTOEDWK202

*The Dover Art League, 21 W. Loockerman St., Dover.* Take your photos to the next level by learning the basics of photo editing in Lightroom and Photoshop! Then take it even further with the power of printing! A photograph is never really finished for a photographer until it is printed. Learn post-processing techniques that transform your RAW files into complete photographs. We will explore printing processes by learning ICC profiles and different kinds of papers that match what you want to print. Students will leave this workshop with a final print of their work. Minimum of 5, maximum of 15. Instructor: Jarred Knorr.

## T-SHIRT QUILTING

Ages: 16 & up Fee: \$78  
 (Includes pattern/handouts)  
 Days: Tue Hours: 5:00 – 8:00 p.m.  
 Sess: Feb 6 – Mar 5 AC#TQUILT206

*Delaware Sewing Center, Rodney Village Shopping Center, Dover.* If you are like most people, you have a pile of treasured old T-shirts you just cannot bear to throw away. This class is geared to turning your old clothes into lasting memories. Just think of a graduation gift, a lasting memory of a great vacation, or all those years of sports. Minimum of 4, maximum of 7. Please pick up supply list at Delaware Sewing Center before class. Fabric will need to be washed before class. For more information and a list of supplies, call Delaware Sewing Center at 302-674-9030.



## BEGINNER/INTERMEDIATE BOBBIN LACE

Ages: 13 & up Fee: \$51 (beginners)  
 AC#BOBBINB206  
 \$41 (intermediate)  
 AC#BOBBINI206  
 Days: Tue Hours: 6:00 – 9:00 p.m.  
 Sess: Feb 6 – Mar 19

*Kent County Administrative Complex, Room 117, 555 Bay Rd., Dover.* Welcome to the world of the 18th century cottage industry craft of hand-made lace. Bobbin Lace will be made using pins on a lacemaking pillow with each thread on an individual bobbin. Stitches are created by crossing or twisting the bobbins. Participants will learn the beginning stitches of Torchon lace to create several bookmarks. Lacemaking equipment will be available to rent from the instructor. Prerequisite: Attended the beginner class or have basic knowledge. (Must bring own equipment.) Minimum of 4, maximum of 6. For a list of supplies and rental fees, call instructor Kim Czerwinski at 302-736-6336.

## BREATH WORK & SOUND BATH MEDITATION SERIES

Ages: 16 & up Fee: \$59  
 Days: Wed Hours: 6:30 – 7:30 p.m.  
 Sess: Jan 3 – Jan 31 AC#SOUNDBATH103  
 (No class 1/24)

*Location TBD, Clayton.* Combining the power of breath with healing sound, this class assists students in taking control of their stress response, sleep quality & energy levels regardless of age or health. Students will practice proper breathing techniques while listening to gentle tones designed to induce an almost immediate feeling of well-being. A guided meditation will accompany for part of the class. Bring yoga mat/cushion or use one provided. Led by certified Breath Coach & Meditation Instructor Audra Littleton. For more information and location, call Audra Littleton at 302-530-8220. Classes led by certified meditation instructor Audra Littleton. Visit [www.Find-ur-Balance.com](http://www.Find-ur-Balance.com) for more info. Maximum of 10.

## CERAMICS FOR KIDS

Ages: 7 – 12 Fee: \$80 (Includes all materials)  
 Day: Mon Hours: 5:00 – 7:00 p.m.  
 Sess: Jan 29 – Feb 26 AC#CERAMK129  
 (No class 2/19)

*The Dover Art League, 21 W. Loockerman St., Dover.* This fun four-week course is designed for tactile learners, young artists, and kiddos that like to get their hands dirty. Students will learn simple hand-building techniques as they design and create their own pinch pots and slab mugs from start to finish. They will use simple potter's tools and explore different decorating and glazing techniques. Students will learn about the drying stages of clay and the different firings that go into creating ceramic wares. *Please wear closed-toed shoes and clothing that you don't mind getting dirty. Please tie back long hair and do not wear rings or dangling jewelry.* Minimum of 5, maximum of 12. Instructor: Browyn Sherman.

## EFT FOR EVERYTHING

Ages: 15 & up Fee: \$41  
 Days: Wed Hours: 6:30 – 8:30 p.m.  
 Sess: Feb 7 AC#EFT207

*Kent County Administrative Complex, Room 221, 555 Bay Rd., Dover.* The Emotional Freedom Technique (EFT), OR "Tapping", is the most influential and widely known energy psychology method in the world. When properly done, EFT reduces (or completely removes) any problem being addressed, often in less than twenty minutes. Participants will learn the tapping sequence and standard affirmations in order to benefit from EFT immediately. Maximum of 20. Class led by certified EFT practitioner, Audra Littleton. Visit [www.Find-ur-Balance.com](http://www.Find-ur-Balance.com) for more information.

## EXPLORE! DISCOVER! EXPERIMENT!

Ages: 9 – 13 Fee: \$75 (Includes materials)  
 Days: Thu Hours: 5:00 – 7:00 p.m.  
 Sess: Feb 8 – Feb 29 AC#EDEDAL208

*The Dover Art League, 21 W. Loockerman St., Dover.* Explore the history of art! Discover new creative skills! Experiment with art! This is a hands-on art history class for kids that focuses on expanding the students' knowledge of art through study and practice. Throughout this four-week program, students will study art movements such as cubism, contemporary art, impressionism, and neo-expressionism. We will be exploring artists like Pablo Picasso, Yayoi Kusama, Jean-Michel Basquiat, Sargent Claude Johnson, and Claude Monet. Each class the students will take time to practice the art movement we have studied to help them with developing their own personal style and expand their understanding of the history of art. Minimum of 5, maximum of 15. Instructor: Katie Schoepp.

## HEALTHY EATING HABITS – AN ONLINE SEMINAR

Ages: 18 & up Fee: \$60  
 Days: Mon Hours: 6:00 – 7:00 p.m.  
 Sess: Jan 8 – Feb 12 AC#HEATHAB108

*Online Program. Zoom link provided for each class.* Join our ACE certified personal trainer and nutrition coach for a supportive online series focused on discussing how to develop and maintain healthy eating habits, macronutrients, micronutrients, and healthy weight management practices. Participants will learn about their daily caloric need and the kinds of foods needed to create a personalized healthy eating plan. An informational packet including a food journal, meal plan template and recipe template will be provided by the instructor. Minimum of 5, maximum of 15. Instructor: Charity Dennis-Cochran.

# EDUCATIONAL FITNESS

## INTRO TO CERAMICS

Ages: 16+ Fee: \$100 (Includes all materials)  
Day: Thu Hours: 5:00 – 7:00 p.m.  
Sess: Feb 22 – Mar 21 AC#INCERAM222  
(NO class 3/14)

*The Dover Art League, 21 W. Loockerman St., Dover.* This course offers an introduction to the fundamentals of pottery making techniques, no wheel work required. You will receive hands-on instruction focused on hand building techniques like working with coils and slabs to shape simple forms. You will learn to use basic tools and apply handles. You will explore decorating and glazing techniques throughout the drying and firing stages. Students will have the opportunity to create unique pieces such as mugs, bowls, and decorative pots, from start to finish. No previous experience is required. *Please wear closed-toed shoes and clothing that you don't mind getting dirty. Please tie back long hair and do not wear rings or dangling jewelry.* Instructor: Browyn Sherman.

## PHOTOGRAPHY FOR BEGINNERS

Ages: 16+ Fee: \$100  
Day: Sun Hours: 10:00 a.m. – 12:00 noon  
Sess: Feb 11 – Mar 17 AC#PHOTBEG211

*The Dover Art League, 21 W. Loockerman St., Dover.* Do you have a camera, but still use the auto settings? Do you want maximum control over your images to achieve exactly what you envision? Then this class is for you! In this 6-week course, students will learn the basics of photography including: Exposure, Aperture, Shutter speed, Basic editing & more! Students will have the opportunity during class hours to get outside and practice the techniques they learn. All you need is a DSLR camera and a notebook! The editing portion will be taught via a projector, but students can bring their own laptop if they would like. Minimum of 5, maximum of 20. Instructor: Jarred Knorr.

## REIKI "1"

Ages: 16 & up Fee: \$74  
Days: Wed Hours: 6:30 – 8:30 p.m.  
Sess: Feb 21 & Feb 28 AC#REIKI1221

*Kent County Administrative Complex, Room 221, 555 Bay Rd., Dover.* Reiki is a safe, simple and natural form of energy medicine. It is a complete system for self-care that compliments traditional medical care and promotes the body's natural ability to heal. Participants will learn the Reiki hand positions and complementary tools designed to be used as self-treatments, as well as for family and friends. Each participant receives traditional level 1 attunements, and a completion certificate. Maximum of 12. For more information, call instructor Audra Littleton at 302-530-8220.

## AQUA AEROBICS / CARDIO BLAST

Ages: 18 & up Fee: \$75  
Days: Tue and Thu Hours: 6:00 – 7:00 p.m.  
Sess: Jan 2 – Feb 1 AC#FMMCAQ102  
Sess: Feb 13 – Mar 14 AC#FMMCAQ213

*Modern Maturity Center, Dover.* Take advantage of water's natural resistance to get an aerobic and toning workout without the wear and tear on your joints. This program focuses on cardiovascular fitness and range of motion and is a great workout for seniors. Participants must bring their suit and towel. Minimum of 20, maximum of 25. Instructor: Betsy Gustafson, personal trainer and fitness instructor with 30+ years of experience.

## VIRTUAL BODY TONING

Ages: 16 & up Fee: \$55  
Days: Tue & Thu Hours: 5:30 – 6:30 p.m.  
Sess: Jan 9 – Feb 27 AC#BTONE109  
(No class 1/25)  
Sess: Mar 5 – Apr 30 AC#BTONE305  
(No class 3/19, 4/2, 4/4)

*Online classes, Zoom link provided for each class.* This class concentrates on those trouble areas (thighs, hips, and abdomen), as well as firming up the upper body (arms, back, shoulders, and chest). Participants need a mat and two 1 to 5 lb. hand weights. Minimum of 10, maximum of 30. Instructor: Kathy Kennedy-Ratajack.



## VIRTUAL YOGA

Ages: 16 & up Fee: \$35  
Days: Tue & Thu Hours: 6:35 – 7:05 p.m.  
Sess: Jan 9 – Feb 27 AC#FYOGA109  
(No class 1/25)  
Sess: Mar 5 – Apr 30 AC#FYOGA305  
(No class 3/19, 4/2, 4/4)

*Online classes, Zoom link provided for each class.* Yoga begins with simple breathing exercises and stretches intended to clear the mind as well as open up the lungs. Most people beginning yoga will experience measurable progress in their strength and flexibility after a week or two of daily practice. Clothing should be comfortable to allow free movement. Participants need a yoga sticky mat. Minimum of 10, maximum of 30. Instructor: Kathy Kennedy-Ratajack.

## ZUMBA®

Ages: 16 & up Fee: \$40  
Days: Mon & Thu Hours: 6:30 – 7:30 p.m.  
Sess: Jan 4 – Feb 15 AC#FSNEZU104  
(NO class 1/15)  
Sess: Feb 22 – Mar 28 AC#FSNEZU222

*North Smyrna Elementary, Smyrna.* Zumba® is a mix of low-intensity and high-intensity moves for an interval-style, calorie-burning dance fitness party. Once the Latin and World rhythms take over, you will see why Zumba® Fitness classes are often called exercise in disguise. You will get a total workout, combining all elements of fitness – cardio, muscle conditioning, balance and flexibility, boosted energy and a serious dose of awesome each time you leave class. Please bring water to class. Instructor: Karlett "Lett" Walker Licensed Zumba Instructor.



## ZUMBA® GOLD PLUS

Ages: 16 & up Fee: \$65  
Days: Mon & Wed Hours: 5:00 – 6:00 p.m.  
Sess: Jan 8 – Feb 12 AC#FZGP108  
(No class 1/15)

*Kent County Recreation Center, 1683 New Burton Rd., Dover.* Come join this fun and easy to follow Zumba® class. This version of Zumba® allows you to dance at your own pace. Incorporates verbal instruction in addition to hand cueing to further assist in the teaching process. This is a low impact dance party where you choose the intensity you want. You will groove to Latin, R&B, Oldies, Big Band, Rock, Dance Hall, Pop, and more. There is something for everyone and every fitness level. This is a no judgement zone, with tons of fun. Hope to see you there. Minimum of 10, maximum of 25. Instructor: Denise Jackson.

# LEAGUES

## ADULT CO-ED INDOOR SOCCER LEAGUE

Ages: 16 & up Team Fee: \$450  
 Days: Sun Hours: 5:00 p.m.  
 Sess: Jan 7 AC#INSOCLG107

*Kent County Recreation Center, 1683 New Burton Rd., Dover.* Six players on the field at one time (including a keeper); one player must be a female. **Indoor shoes only NO CLEATS.** All games will be officiated by trained officials. League will be over an 8-week course depending on how many teams register. Two 24-minute halves with running clock.

## BOY'S HIGH SCHOOL INDOOR SOCCER LEAGUE

Ages: 14 - 18 Team Fee: \$450  
 Days: Fri Hours: 5:00 p.m.  
 Sess: Jan 12 AC#HSBSOLG112

*Kent County Recreation Center, 1683 New Burton Rd., Dover.* Six players on the field at one time (including a keeper). **Indoor shoes only NO CLEATS.** All games will be officiated by trained officials. League will be over an 8-week course depending on how many teams register. Two 24-minute halves with running clock.

## GIRL'S HIGH SCHOOL INDOOR SOCCER LEAGUE

Ages: 14 - 18 Team Fee: \$450  
 Days: Tue Hours: 5:00 p.m.  
 Sess: Jan 9 AC#HSGSCOLG109

*Kent County Recreation Center, 1683 New Burton Rd., Dover.* Designated for high school teams as they prepare for their Spring season, offering a quality soccer experience for both recreational and competitive players. **Indoor shoes only NO CLEATS.** League will be over an 8-week course depending on how many teams register. Two 24-minute halves with running clock.

## INDOOR BOY'S HIGH SCHOOL LACROSSE LEAGUE

Ages: 13 to 18 Fee: \$87  
 Days: Thu Hours: 7:00 p.m.  
 Sess: Jan 4 - Feb 8 AC#BLAX104

*Kent County Recreation Center, 1683 New Burton Rd., Dover.* This pick-up league is designed to develop fundamental skills and techniques that will help prepare your game at the next level. All players will be placed on teams by the Coaching staff and will compete in games over the 6-week time frame. Players need to provide their own equipment (helmet, mouthpiece, gloves, elbow/shoulder pads and stick). **NO CLEATES or SPIKES.** Minimum of 10, maximum of 70. For more information, call Joesph Paugh at 302-744-2486.

## INDOOR YOUTH LACROSSE LEAGUE

Ages: 9 to 13 Fee: \$87  
 Days: Thu Hours: 5:45 p.m.  
 Sess: Jan 4 - Feb 8 AC#YLAXLG104

*Kent County Recreation Center, 1683 New Burton Rd., Dover.* This pick-up league is designed to develop fundamental skills and techniques that will help prepare your game at the next level. All players will be placed on teams by the coaching staff and will compete in games over the 6-week time frame. Players need to provide their own equipment (helmet, mouthpiece, gloves, elbow/shoulder pads and stick). **NO CLEATS or SPIKES.** Minimum of 10, maximum of 70. For more information, call Joesph Paugh at 302-744-2486.

## INSTRUCTIONAL YOUTH SOCCER LEAGUE

Fee: \$75  
 Days: Sun Hours: 2:00 - 5:00 p.m.  
 Sess: Jan 7 - Feb 11  
 Ages: 9 - 11 AC#YISOCLG107A  
 Ages: 12 - 14 AC#YISOCLG107B

*Kent County Recreation Center, 1683 New Burton Rd., Dover.* Designed to keep youth soccer players playing through the winter. Each player will be placed on a team by coaching staff and will compete in games over a 6-week course. An instructional session will take place prior to game time for teams to practice. We will have coaches leading the instructional sessions, but we do need help from volunteer parents to assist with teams! Each team will participate in a 1-hour session during the above time frame.



Kent County Parks & Recreation

# KENT YOUTH

# SOCCER LEAGUE




For League information & updates



<https://secure.recl.com/DE/kent-county-de/catalog>  
 302-744-2495 KYSL@kentcountyde.gov

Kesselring County Park,  
 Kent County Recreation Center  
 1683 New Burton Rd. Dover, DE 19904

**SPRING 2024**

**REGISTRATION WILL OPEN ON MONDAY 1/15/24.**

**SPRING EARLY BIRD DISCOUNTS END SUNDAY 2/18/24**

**After February 18th, registration will be full price if spots are available.**



# LEAGUES

## KENT YOUTH BASKETBALL LEAGUE (SPRING)

Fee: \$65  
 AC#ROKYBL305  
**Ages: Rookie (7 to 8)**  
 Days: Tue, 6:00 – 7:30 p.m.  
 Sess: Mar 5 – Apr 16 (No games 4/2)  
**Ages: Youth (9 to 10)** AC#YKYBL221  
**Ages: Junior (11 to 12)** AC#JRKYBL221  
**Ages: Rec Division (13 to 16)** AC#BRKYBL221  
 Days: Mon & Wed Hours: 6:00 – 8:00 p.m.  
 Sess: Feb 21 – Apr 17 (No games 4/3)

*Kent County Recreation Center, 1683 New Burton Rd., Dover.* Youth, Junior & Rec teams will play games on Wednesday nights and have practice on Monday nights. A full schedule of team practices and games will be distributed at the beginning of the league. Wednesday Feb 21st and Monday Feb 26th will be a player showcase and nights. Games will have two 20-minute halves with a running clock. First game will be March 6th. Team T-Shirts will be provided.

Rookie division will not have player showcase nights and will begin on March 5th and end April 16th. Rookie division will practice and play a game on the same night.

Additional volunteer coaches and assistants are needed. If you are over 18 and would like to volunteer, please call the Recreation Office at 302-744-2495. (Background checks are required for all coaches and assistants and will be administered free of charge.)

## PICKLEBALL LADDER LEAGUE

Ages: 18 & up Fee: \$28/person  
 Days: Wed Hours: 6:30 p.m.  
 Sess: Jan 10 – Feb 14 AC#PBLEAG110

*Kent County Recreation Center, 1683 New Burton Rd., Dover.* Individual registration only. League will play 6 weeks. Basic understanding of Pickleball rules and game play is necessary. Trophies awarded to 1st and 2nd place finishers. Minimum of 12, maximum of 24.

## WINTER 2024 CO-ED VOLLEYBALL LEAGUE

Ages: 16+ Fees: \$300 on or before 12/22/23  
 \$350 after 12/23/23  
 Registration closes 1/2/24  
 Days: Tue Hours: 6:00 – 9:00 p.m.  
 Sess: Jan 9 AC#ASPVBLG109

*Kent County Recreation Center, 1683 New Burton Rd., Dover.* Matches are best of 3, rally scoring, games are scored to 25. Regular season based on number of teams. League concludes with single elimination playoffs. For more information call Jonathan Stewart 302-744-2489 or email at jonathan.stewart@kentcountyde.gov.

## YOUTH INDOOR FLAG FOOTBALL LEAGUE

Fee: \$65 (Includes T-shirt)  
 Ages 7 – 14  
 Days: Sat  
 Session: Jan 6 – Feb 10  
 Ages – 7 to 10 Hours: 3:00 – 4:00 p.m.  
 AC#YRCFFB106A  
 Ages – 11 to 14 Hours: 4:00 – 5:00 p.m.  
 ACYRCFFB106B

*Kent County Recreation Center, 1683 New Burton Rd., Dover.* Participant will receive training in the fundamental skills of offense and defense. This non-contact league emphasizes on throwing and catching. Games will be played inside the Recreation Center – NO CLEATS OR SPIKES. Minimum of 10, Maximum of 50. Parents or guardians are encouraged to volunteer as coaches and assistant coaches. If you are over 18 and would like to volunteer, please call the Recreation office. (Background checks are required for all coaches and assistants.) For more information, call Joesph Paugh at 302-744-2486.

# MUSIC/DANCE

## KCRC SOUL LINE DANCING

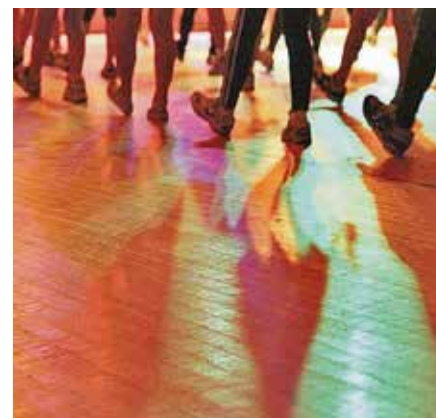
Ages: 16 & up Fee: \$41  
 Days: Tue Hours: 6:30 – 7:30 p.m.  
 Sess: Jan 16 – Feb 13 AC#KCRCSLD116  
 Sess: Feb 20 – Mar 19 AC#KCRCSLD220

*Kent County Recreation Center, Multipurpose Rm, Dover.* Looking for a great way to burn calories, meet new people, and improve your coordination while enhancing your dance moves? Well look no further; Soul Line Dancing is for you. Come out and join the fun at our beginner level classes as you learn popular dances such as the Electric Slide, Wobble, Cupid Shuffle, Uptown Funk, and many more. Minimum of 10, maximum of 35. Instructors: Chuck & Kelly Cooper, C & K Soul Line Dancing.

## LINE DANCE 101

Ages: 18 & up Fee: \$35  
 Days: Tue Hours: 5:00 – 5:45 p.m.  
 Sess: Jan 2 – Jan 23 AC#LINED102  
 Sess: Feb 6 – Mar 5 AC#LINED206  
 (No class 2/27)

*Smyrna Opera House, Smyrna.* So, you think you can't line dance. NOT TRUE. Please join Ida as she teaches you the basic steps and counts that will have you line dancing at your events. This 4-week session will get you moving while you have fun to great music. Minimum of 10, maximum of 25. Instructor: Ida Kirkendoll, Owner, Forever Active Lifestyle.



## THANK YOU TO OUR SPONSORS FOR THE CHILDREN'S HALLOWEEN FANTASY TRAIL

ALPINE AND RAFETTO ORTHODONTICS  
 DAILY STATE NEWS  
 DEL-ONE  
 GEORGE & LYNCH, INC  
 GREEN DIAMOND BUILDERS, INC.

SAVANT WEALTH MANAGEMENT  
 SEDIDO/MCGINNIS REAL ESTATE  
 STATE FARM – KATIE BENNETT  
 TOP CITY  
 TRE SORELLE DOLCE

# SPORT INSTRUCTION

## ADVANCED PICKLEBALL INSTRUCTION

Ages: 16 & Up Fee: \$65  
 Days: Thu Hours: 8:00 – 10:00 a.m.  
 Sess: Jan 4 – Jan 25 AC#APICKLIN104  
 Sess: Feb 8 – Feb 29 AC#APICKLIN208

*Kent County Recreation Center, 1683 New Burton Rd., Dover.* Are you ready to take your pickleball game to the next level? This course will cover intermediate to advanced pickleball skills such as: dinking, volleying, third shot drop, reset, lob, defend lob. Tactics will be taught for doubles play: serve, return of serve, transition to non-volley zone, going on attack at the non-volley zone. Minimum of 6, maximum of 24.



## BEGINNER HOCKEY SKATING SCHOOL

Ages: 4 and up  
 Days: Sat Hours: 11:30 a.m. – 12:20 p.m.  
 Fee: \$85  
 Sess: Jan 6 – Feb 10 AC#BEGSKACIR106  
 Fee: \$70  
 Sess: Mar 2 – Mar 30 AC#BEGSKACIR302

*Centre Ice Rink, Harrington.* This program is for skaters looking to become hockey players but are not quite ready to join learn to play. The goal is to continue to develop their skating skills while introducing them to a hockey environment. Equipment needed are Ice Hockey Helmet, Hockey Gloves, Skates, and Hockey Stick. You may borrow a hockey stick and figure or hockey rental skates if you do not have your own. Hockey Equipment is available for purchase in Cool Sports Pro Shop. Requirements: Must be going into snowplow sam 3 or Beginner 2 of LTS.

## BEGINNER PICKLEBALL CLASS

Ages: 16 & up Fee: \$65  
 Days: Tue Hours: 8:00 – 10:00 a.m.  
 Sess: Jan 9 – Jan 30 AC#PICKLBEG109  
 Sess: Feb 6 – Feb 27 AC#PICKLBEG206

*Kent County Recreation Center, 1683 New Burton Rd., Dover.* This class is for beginners only. Pickleball is designed for all skill and age levels and is very easy to learn. Knowledge of the game is not necessary. Basic drills, skills and rules of the game will be taught. Our indoor courts will make your Pickleball experience much more memorable. Minimum of 6, maximum of 14.

## INTERMEDIATE PICKLEBALL CLASS

Ages: 16 & up Fee: \$65  
 Days: Tue, Thu, or Sat  
 Hours: 10:30 a.m. – 12:30 p.m.  
 Sess: Tue, Jan 9 – Jan 30 AC#PICKLINT109  
 Sess: Sat, Jan 13 – Feb 3 AC#PICKLINT113  
 Sess: Tue, Feb 6 – Feb 27 AC#PICKLINT206  
 Sess: Thu, Jan 4 – Jan 25 AC#PICKLINT104  
 Sess: Thu, Feb 8 – Feb 29 AC#PICKLINT208

*Kent County Recreation Center, 1683 New Burton Rd., Dover.* Some previous experience of Pickleball is necessary. This class is designed for individuals who want to expand their knowledge and skills of the game. Serving, positioning, lob shots, dinking are just some of the skills that will be taught during this class. Minimum of 12, maximum of 36.

## JR. NBA POST SEASON

Fee: \$50 (Includes T-shirt)  
 Ages: 7 – 9 AC#JRNBAPOST108  
 Day: Mon/Wed Hours: 6:00 – 7:00 p.m.  
 Ages: 10 – 12 AC#JRNBAPOST108JR  
 Day: Mon/Wed Hours: 7:00 – 8:00 p.m.  
 Sess: Jan 8 – Jan 31  
 (\*NO program Jan 15)

*Kent County Recreation Center, 1683 New Burton Rd., Dover.* Players will take part in basketball skills development clinics that will teach fundamental basketball skills including ball-handling, shooting, rebounding, and passing. Players will rotate through skill development stations and participate in scrimmages to further develop skills.

## LEARN TO ICE SKATE

Ages: 4 and up  
**Days: Fri** Hours: 7:00 – 7:50 p.m.  
 Sess: Jan 5 – Feb 16 AC#YCIRLTS105  
 Fee: \$102  
 Sess: Mar 1 – Mar 29 AC#YCIRLTS301  
 Fee: \$70  
**Days: Sat** Hours: 10:30 – 11:20 a.m.  
 Sess: Jan 6 – Feb 10 AC#YCIRLTS106  
 Fee: \$86  
 Sess: Mar 2 – Mar 30 AC#YCIRLTS302  
 Fee: \$70

*Centre Ice Rink, Harrington.* Have fun while learning the fundamentals of ice skating. The Learn to Skate program is open to individuals, children 4+ through adult. No previous skating experience is required. Each 50-minute class consists of a 25-minute group lesson and a supervised practice session. Fee includes skate rental. Parents can skate with their child during the practice time for a small fee. **HELMET RULE:** All children under the age of 7 are **REQUIRED** to wear a bike or approved hockey helmet. (Helmets are not supplied.)

## STEP-BY-STEP ACADEMY

Days: Sun Fee: \$110  
 Ages: 10 – 14 AC#SBSACAD107A  
 Hours: 10:00 – 11:30 a.m.  
 Ages: 15 – 18 AC#SBSACAD107B  
 Hours: 12:00 – 1:30 p.m.  
 Sess: Jan 7 – Mar 3  
 (No class 2/25)

*Kent County Recreation Center, 1683 New Burton Rd., Dover.* This is not a beginner program! Step-by-step soccer academy follows Technical Skill Development. Brazilian Soccer Methodologies emphasize the development such as control the ball, dribbling and passing from an early age. This is achieved through drills and small-sided games that encourage players to use and improve their technical abilities.

## TOT & PARENT MULTI SPORT CLASS

Ages: 2 – 4 Fee: \$55  
 Days: Wed Hours: 3:00 – 4:00 p.m.  
 Sess: Jan 10 – Feb 14 AC#TRCPTM110

*Kent County Recreation Center, 1683 New Burton Rd., Dover.* This is a Parent and child class that is a great introduction to a variety of sports for both parents and their emerging athletes. Parents will work with their child to develop skills and a love for sports. This class will cover a variety of sports including Soccer, Football, Baseball, Hockey, Basketball, Volleyball, etc. Minimum of 5, maximum of 15.

## TOT INSTRUCTIONAL BASKETBALL

Ages: 4 – 6 Fee: \$40  
 Days: Sat Hours: 9:30 – 10:30 a.m.  
 Sess: Jan 13 – Feb 10 AC#TBASKLG113

*Kent County Recreation Center, 1683 New Burton Rd., Dover.* Participants will be placed on teams by Kent County Parks and Recreation. Players will be introduced to the rules and fundamentals of basketball. The main goal is to have fun! Minimum of 10, maximum of 20.



# SPORT INSTRUCTION

## TOT INSTRUCTIONAL SOCCER

Ages: 4 – 6                      Fee: \$46  
Days: Sun                      Hours: 9:00 – 9:55 a.m.  
Sess: Jan 7 – Feb 11              AC#TSOCRC107

Kent County Recreation Center, 1683 New Burton Rd., Dover. This is an introductory class to develop the fundamental skills on how to play soccer. Players will receive training from licensed coaches following a 6-week curriculum. The main goal is to have fun! Must have clean sneakers and shin guards. Minimum of 10, maximum of 20.

## TOT MULTI SPORT CLASS

Ages: 4 – 6                      Fee: \$55  
Days: Wed                      Hours: 4:00 – 5:00 p.m.  
Sess: Jan 10 – Feb 14              AC#TRCTMS110

Kent County Recreation Center, 1683 New Burton Rd., Dover. This class is a great introduction to a variety of sports for emerging athletes. This class will teach fundamentals on how to play various sports and how to play with others. A variety of sports will be covered including Soccer, Football, Baseball, Hockey, Basketball, Volleyball, etc. Minimum of 5, maximum of 15.

## YOUTH INSTRUCTIONAL SOCCER

Ages: 7 – 9                      Fee: \$52  
Days: Sun                      Hours: 10:00 – 10:55 a.m.  
Sess: Jan 7 – Feb 11              AC#YISOCLG107

Kent County Recreation Center, 1683 New Burton Rd., Dover. This is an introductory class to develop the fundamental skills on how to play soccer. Players will receive training from licensed coaches following a 6-week curriculum. The main goal is to have fun! Must have clean sneakers and shin guards. Minimum of 10, maximum of 20.

# TOURNAMENTS

## PICKLEBALL TOURNAMENT

Ages: 16 & up                      Fee: \$50  
Days: Sat                      Hours: 8:00 a.m. start  
Sess: Mar 9

Kent County Recreation Center, 1683 New Burton Rd., Dover. Men's Doubles, Women's Doubles and Mixed Doubles. Register online at [pickleballbrackets.com](http://pickleballbrackets.com)

## UNION FUTSAL CUP

Ages: U8 – 18+                      Team Fee: \$250  
Sess: Boys – Sat Feb 24  
Sess: Girls – Sun Feb 25

Kent County Recreation Center, 1683 New Burton Rd., Dover. Each age group will consist of eight teams and each team is guaranteed to play at least three 25-minute games. The top team from each age group will receive medals. If you are interested in being a volunteer score keeper, please contact the Office at 302-744-2495.



## DROP IN PUNCH CARD

All drop-in activities at the Kent County Recreation Center require a valid "Drop-In Punch Card" to participate. The \$20 punch card is good for 10 single drop-in activity sessions (\$2 per session) such as basketball, pickleball, soccer, volleyball, etc. (Refer to posted schedule on the website, Facebook and Office for times.) If you are pre-registered for a fee based program you do not need a drop-in punch card for those programs.



### HOW TO PURCHASE

Punch Cards may be purchased in person at the Kent County Recreation Center:

Regular Business Hours – Monday through Friday, 8:00 a.m. to 5:00 p.m. using Cash or Credit Card ONLY.

Non Business Hours – Monday through Friday after 5:00 p.m. and Weekends – subject to the following restriction; limit of 2 per purchaser, CASH ONLY (no bills greater than \$20 will be accepted.)

Registration form must be filled out completely with each purchase.

### ADDITIONAL INFORMATION

Cards are not available for online purchase, no refunds or exchanges, lost or stolen cards will not be replaced. You may use your card for guests or groups, as long as there are enough punches available.

# REGISTRATION PROCEDURES

• Registration will be accepted through the mail, in-person or on-line on a first-come, first-served basis. **NO PHONE IN REGISTRATION WILL BE ACCEPTED.** Cost of activity must be paid in full when registering except when stated differently. Please follow registration procedures listed below.

## ONLINE REGISTRATION

Online Registration catalog can be accessed via [secure.rec1.com/DE/kent-county-de/catalog](https://secure.rec1.com/DE/kent-county-de/catalog). MasterCard, Visa and Discover Card payments are processed through Authorize.net; however, refunds must be processed through Kent County Parks and Recreation; allow up to 2 weeks for processing. All other refund policies apply.

## CREDIT CARD USE POLICY

Kent County Parks and Recreation cares about the safety of your credit card information. We will no longer accept mailed or phoned in credit card payments. Credit card payments (Visa, MasterCard, Discover) can be made via our online registration catalog (CivicRec). Kent County Parks and Recreation can only accept credit card payment by authorized account holder as displayed on the card.

## PROGRAM ACCOMMODATIONS

The Kent County Parks and Recreation Division invites people with and without disabilities to enjoy our programs, parks, and facilities. It is the policy of the Kent County Levy Court that all programs be accessible to all Qualified Handicapped Individuals as provided in Section 504 of the Rehabilitation Act of 1973. If you or the person(s) you are registering need modification for your program of interest, please contact Mike Rigby at 302-744-2495 or email at [michael.rigby@KentCountyDE.gov](mailto:michael.rigby@KentCountyDE.gov) before registering to discuss this matter.

## TEXT MESSAGE NOTIFICATION

Through our registration software vendor, CivicRec, we have the capabilities of sending text message notifications directly to your mobile phone. The text message notification system would only be used for the program you are currently participating in and relate only to important messages such as cancellations, changes to schedule, or other necessary updates. In order to receive the text message notifications, you must submit your mobile carrier name when signing up for an account. If you have any questions regarding this helpful program, please call our office.

## REFUND POLICY

Registration fees for recreation programs/activities must be paid in advance and shall be refunded in full to the payer of record if the County cancels the program/activity. If a participant cancels his/her participation in a program at least **five (5) days** prior to the first scheduled day, a full refund shall be paid less a **\$5** processing fee pursuant to County ordinance. Refunds will not be given for any other reason.

## GENERAL INFORMATION

- Classes, activities, and trips are subject to cancellation for any reasonable cause.
- For weather and last minute cancellation information, please view our website at [kentcountyde.gov/home](https://kentcountyde.gov/home) and facebook.com/KentCountyParksandRec. Timely program cancellation notifications will be done by email or text notification from Staff.
- Please make sure that the instructor is present before dropping your child off at a program
- Arrive to pick up your child at least five minutes before the program's scheduled closing. Failure to pick up your child on time may result in expulsion from the program.
- A child may be expelled from a program with no refund after notifying parent of disciplinary problems.
- The Department may photograph programs and participants for publicity purposes, such as the brochure, facebook, twitter, etc.
- The Department has the right to adjust any of the program details in the brochure including fees, locations, instructors, times, days and starting dates.

## WAIVER AND RELEASE OF LIABILITY AND INDEMNITY AGREEMENT

I hereby acknowledge that in using the facilities, programs and equipment of Kent County Parks and Recreation, I do so entirely at my own risk and I assume the risk of any injury and/or damage while engaging in any physical exercise or activity or use of any facility on the premises. This assumption of the risk includes, without limitation, my use of the gymnasium, athletic courts, lobby, hallways, athletic fields, parks, sidewalk, parking lot, seating, or any equipment in the facility/park. I further agree to assume the risk in participating in any activity, class, program, instruction, or any event sponsored by Kent County Parks and Recreation (Kent County Levy Court).

By executing this Agreement, I HEREBY WAIVE, RELEASE AND FOREVER DISCHARGE, Kent County Levy Court and its past, present and future administrators, partners, employees, insureds, assigns, agents, and representatives in their personal and professional capacities (collectively "Kent County Parks and Recreation"), from all claims, demands, injuries, damages, actions or causes of action, and from all acts of active or passive negligence on the part of such entity, its servants, agents, or employees of any nature whatsoever, including attorneys' fees and costs arising out of or connection with the aforementioned activities. I further agree to indemnify and hold harmless Kent County Levy Court from any claims, demands, injuries, damages, actions or causes of action, loss, liability, damage or cost which Kent County Levy Court may incur due to my presence at or use of the facility. I further agree that the foregoing warranty, waiver and indemnity agreement is intended to be as broad and inclusive as permitted by the law of the State of Delaware and that if any portion is deemed to be invalid, it is expressly agreed that the remaining terms shall remain in full legal force and effect.





# KENT COUNTY PUBLIC LIBRARY

497 S. Red Haven Lane, Dover | 302-744-1919



## WINTER 2023/2024 PROGRAMS & EVENTS

All programs are free, open to the public, and held at Kent County Public Library unless stated differently. **Preregistration is required as noted.** Stop by the library circulation desk or call (302) 744-1919 to register. You can also register online at [www.tinyurl.com/KCPLcalendar](http://www.tinyurl.com/KCPLcalendar). (Parent or other responsible adult must be present in the library, including during programs, for any child/youth under the age of 16.)

**The Library reserves the right to adjust program dates, times, enrollment maximums, and program/event cancellations.**

It is the policy of the Kent County Levy Court that all programs be accessible to all qualified handicapped individuals as provided in Section 504 of the Rehabilitation Act of 1973. If you or the person(s) you are registering need reasonable accommodation for your program of interest, please contact the Kent County Public Library before registering to discuss the matter with the program coordinator(s).

The Library may photograph programs and participants for publicity purposes, including posting to social media sites.

### ALL AGES PROGRAMS

All programs are free, open to the public, and held at Kent County Public Library, unless stated differently. **Preregistration is required as noted.** Stop by the library circulation desk or call (302) 744-1919 to register. You can also register online at [www.tinyurl.com/KCPLcalendar](http://www.tinyurl.com/KCPLcalendar). (Parent or other responsible adult must be present in the library, including during programs, for any child/youth under the age of 16.)

### WINTRY MIX WINTER READING CHALLENGE

**December 1, 2022 – February 29, 2023**

Pick up a challenge/activity packet and return it by February 29, 2024 to earn a certificate and prizes. Only Kent County-issued library cardholders are eligible to participate.

### DIY FESTIVE POMANDERS

**Tuesday, December 5 – 4:00 p.m. – 6:00 p.m.**

Decorate an orange to create a fragrant pomander ball using cloves and cinnamon. All supplies included, while they last. Younger children may require parental/adult assistance.

### UGLY HOLIDAY SWEATER PARTY

**Wednesday, December 13 – 6:00 p.m.**

Wear your most festive ugly holiday sweater/sweatshirt/t-shirt, and join us to create a few festive holiday crafts while supplies last. Don't be late, or you might miss our "special guest." ("Ho, ho, ho!") The Delaware Choral Society will perform a short program of seasonal music at 7:00 p.m. (Seating for the performance is first come, first served.)

### BEETHOVEN DAY

**Saturday, December 16**



**10:00 a.m. – Beethoven t-shirt**  
Bring your own t-shirt and we will supply the stencil and fabric ink. **Preregistration is required – no walk-ins.** (Program held before normal library business hours. Only those who have pre-registered permitted.)

**1:30 p.m. – Creativity Station**

Make a Beethoven badge button, and enjoy Beethoven-themed coloring pages. While supplies last. (Coloring supplies are for in-house use only.)

**2:00 p.m. – Piano recital**

Join us for a special program featuring Beethoven's timeless music. First come, first served seating.

### JIGSAW PUZZLE SWAP

**Saturday & Sunday, January 13 & 14 – 1:30 – 3:30 p.m.**

Bring in gently used, complete boxed jigsaw puzzles (between 150-1000+ pieces) to KCPL between normal library business hours, between January 2 – January 12. On the day(s) of the swap, you will receive voucher(s) to select the same number of puzzles from the accumulated donations. *We cannot accept donated puzzles on the designated days of the swap (January 13 & 14).* No 3D, wooden or children's puzzles. (Please do not put donated puzzles in the outside book return.)



### DIAL-A-STORY (302) 741-4171

Call from any place, at any time – free! Content changes regularly. *Dial-a-Story sponsored by the Friends of Kent County Public Library.*



# KENT COUNTY PUBLIC LIBRARY

497 S. Red Haven Lane, Dover | 302-744-1919



## CHILDRENS/FAMILY PROGRAMS

All programs are free, open to the public, and held at Kent County Public Library, unless stated differently. **Preregistration is required as noted.** Stop by the library circulation desk or call (302) 744-1919 to register. You can also register online at [www.tinyurl.com/KCPLcalendar](http://www.tinyurl.com/KCPLcalendar). (Parent or other responsible adult must be present in the library, including during programs, for any child/youth under the age of 16.)

### PRESCHOOL STORY TIME

**Thursdays – 10:00 a.m.**

(No program December 28.)

Preschoolers (ages 6 and under), along with their accompanying adult(s), are invited to join us at the library every Thursday for stories, songs, crafts and more – a new theme each week! (For groups of five or more, please give advance notice of your visit.)

### 1000 BOOKS BEFORE KINDERGARTEN

Children can collect small incentives for reaching milestones on their way to reaching 1000 books before starting kindergarten. Stop at library circulation desk for more information on registering your child. Reading logs and rewards are distributed on Thursday mornings.

### ENGINEER EARLY GRAB & GO STEM KITS

**Fridays, December 15, January 26, February 23**

Designed for ages 5 – 13. Science has never been so much fun before! Engineer Early Grab & Go STEM kits provide a basic introduction to a variety of STEM topics with engaging and interactive experiences for young children and their families. First come, first served – while they last. **Limit of 3 kits per family.**

### EXCERPTS FROM THE NUTCRACKER WITH THE BALLET THEATRE OF DOVER

**Sunday, November 27 – 2:00 p.m.**

The Ballet Theatre of Dover will present excerpts from its annual performance of the holiday classic, *The Nutcracker*. Limited seating; first come, first served.

### VIRTUAL CRAFT COUNTDOWN TO 2024

(Online only – no in-person meeting.)

**December 1 – 31**

Geared towards ages 8-12. Make a different seasonal craft each day by following our daily craft video on KCPL's Facebook page (search "KCPLibrary"). (Library does not supply craft materials.)

### PAWS FOR READING

**Thursdays, December 7 & 21, January 4 & 18, February 1 & 15, March 7 – 6:30 p.m.**

Bring your child to the library to read aloud for 10-minutes to a friendly therapy dog provided by PAWS for People. Studies have shown that reading aloud to animals can actually help children gain confidence and improve their reading skills. This is a great opportunity for beginner, reluctant and even beginning English learners to practice. Teens and adults are welcome to read too! One reader per dog, per 10-minute reading session. First come, first served.

## SONGS, STORIES AND SLEIGH BELLS

**Wednesday, December 20 – 6:30 – 7:30 p.m.**

Make a holiday craft as we share seasonal stories, including *'Twas the Night Before Christmas* by Clement Clarke Moore, which is celebrating its 200th anniversary of publication in 2023. Don't be late, or you may miss our "special guest." ("Ho, ho, ho!")

## HEART STRINGS

**Saturday, February 10 – 9:00 a.m.**

Ages 6 – 12 (firm). Starting with a heart-shaped form, participants will weave a unique string art design. All supplies included. Limited space; **preregistration is required – no walk-ins.** (Program held before normal library business hours. Only those who have preregistered permitted.)

## DOLLY PARTON'S IMAGINATION LIBRARY

All Delaware children from birth to age five, regardless of their family's income, can sign-up to receive a **FREE** book in the mail each month. Visit [www.lib.de.us/imagination](http://www.lib.de.us/imagination) for more information.

(Brought to you by Delaware First Lady Tracey Quillen Carney's First Choice Initiative, in collaboration with the Delaware Division of Libraries, and the Delaware Library Consortium.)

## TWEEN/TEEN PROGRAMS

All programs are free, open to the public, and held at Kent County Public Library, unless stated differently. **Preregistration is required as noted.** Stop by the library circulation desk or call (302) 744-1919 to register. You can also register online at [www.tinyurl.com/KCPLcalendar](http://www.tinyurl.com/KCPLcalendar). (Parent or other responsible adult must be present in the library, including during programs, for any child/youth under the age of 16.)

## DELAWARE ANIME SOCIETY

**Saturdays, January 13, February 10, March 9  
1:00 – 4:00 p.m.**

Ages 13 and up. The Delaware Anime Society is for those with an interest in Japanese anime (animation), manga (graphic novels), cosplay, music and pop culture to meet.

## BULLET JOURNALING

**Wednesday, December 6 – 6:30 p.m.**

Ages 13 and up. A bullet journal combines a calendar, a "to-do" list, goal tracker, diary, and even a reading journal, into a single, organized book. Registered participants in attendance will receive a blank journal book to get started. Limited seating; **preregistration is required – no walk-ins.**

## HELP KCPL "BOOK FACE"

**Thursday, January 11 – 6:30 p.m.**

Ages 13 – 18. You pull the books and bring the costumes, and we will bring the camera. If your photo works out, your composition may be featured on KCPL's Facebook page (search "KCPLibrary") for our upcoming "Book Face Friday" posts.



# KENT COUNTY PUBLIC LIBRARY

497 S. Red Haven Lane, Dover | 302-744-1919



## TEEN MONEY MANAGEMENT – BUDGETING (CASH FLOW AND EMERGENCY FUNDS)

**Thursday, December 14 – 6:30 p.m.**

Ages 16 and up. “Adulting” can be difficult; and once you’re there, help is hard to find. The Delaware Money School will offer tips on budgeting to help your paychecks stretch farther, and the importance of having an “emergency fund,” and how to start one. Limited seating; **preregistration through the Delaware Money School is required at [www.demoneyschool.org](http://www.demoneyschool.org).**

## TEEN LIBRARY “SUBSCRIPTION BOX”

**Pick-up January 12, February 9, March 8**

Ages 13 – 18 (firm). Each month, registered subscribers will receive a box that includes 2-3 teen/YA fiction library books to check out, along with several small items to keep that tie-in with the monthly genre theme. A valid Kent County-issued teen library card is required. *(Boxes must be picked up within 5 business days of that month’s assigned pick-up date. Failure to pick up your requested box may result in ineligibility to sign up for future boxes for a minimum of three months.)* **Preregistration for each monthly box is required.**

## HEART STRINGS

**Saturday, February 10 – 10:00 a.m.**

Ages 13 – 17 (firm). Participants will use an embroidery needle and floss to “stitch” a beautiful heart-themed card. All supplies included. Limited space; **preregistration is required – no walk-ins.** *(Program held before normal library business hours. Only those who have preregistered permitted.)*

*See “Adult Programs” for other age-appropriate programs and events.*

## ADULT PROGRAMS

All programs are free, open to the public, and held at Kent County Public Library, unless stated differently. **Preregistration is required as noted.** Stop by the library circulation desk or call (302) 744-1919 to register. You can also register online at [www.tinyurl.com/KCPLcalendar](http://www.tinyurl.com/KCPLcalendar).

## KCPL MONTHLY MUSIC BOX

Join us for free, live performances featuring local artists. Limited seating; first come, first served.

**Sunday, November 26 – 2:00 p.m.** – Ballet Theatre of Dover presents excerpts from *The Nutcracker*

**Saturday, December 2 – 4:30 p.m.** – Wilmington Handbell Ensemble

**Wednesday, December 13 – 7:00 p.m.** Delaware Choral Society

**Saturday, December 16 – 2:00 p.m.** – piano recital featuring the music of Beethoven

**Friday, January 26 – 6:30 p.m.** – Pencader Duo (flute duo)

**Friday, February 23 – 6:30 p.m.** – Mid-Del Sax Quartet (big band/standards)

## SPOTLIGHT ON DELAWARE

**Wednesdays – 6:30 p.m.**

Ages 16 and up. Our “Blue Diamond” state may be small, but it is packed with fascinating stories, history and initiatives. Join us for unique looks at the First State. Limited seating; preregistration for each session is required.

**January 10** – Being Buried Alive: The Fear that Swept 19th Century America

**February 7** – The Dover Chocolate Murders of 1898

**February 21** – Allies for Justice: Brown v. Board of Education

**March 6** – Elizabeth Cady Stanton: “Cyrano of the Suffragists”

## BOOKED FOR LUNCH

**Mondays, December 4, January 8, February 5 – 12:30 p.m.**

Ages 16 and up. Bring a bag lunch and discuss books that you’ve recently read with other avid readers – no assigned titles!

## “COLD” READS

**Tuesdays, December 12, January 9, February 6 – 6:30 p.m.**

Ages 16 and up. Join us for a “cold” reading of a variety of old-time radio scripts. Participate by taking a part, or just stay and listen as the magic unfolds. Preregistration encouraged.

## ARTS & LETTERS BOOK CLUB

**Wednesdays, December 6, January 3, February 7 -- 12:30 p.m.**

Ages 16 and up. Read and discuss fiction and non-fiction books related to the various arts.

## LEARN TO PLAY DULCIMER

**Fridays, January 12, 19 & 26 – 4:00 p.m. (3-week session)**

Ages 16 and up. Local folk musician Frances Johnson will introduce new students (and those wishing to brush up on their skills) to basics of the mountain dulcimer. “Loaner” dulcimers will be available for use during the 3-week program. (A valid Delaware library card is required to check out dulcimer.) Limited space; **preregistration is required.**

## CREATIVE SENIORS ART WORKSHOPS

**Saturdays, January 6, 13, 20 & 27 – 10:00 a.m.**

Ages 55+ (firm). Check KCPL’s Facebook page (“KCPLibrary”) for more details on this hands-on art experience. All supplies included. Limited space; **preregistration for each session is required – no walk-ins.** Program made possible, in part, through a grant from the Delaware Division of the Arts. *(Program held before normal library business hours. Only those who have preregistered permitted.)*

## THE FIVE LOVE LANGUAGES: HOW TO RECEIVE AND EXPRESS LOVE

**Sunday, February 4 – 1:30 p.m.**

Ages 16 and up. Licensed therapist Marcia Morin, LPCMH, will present way to keep relationships strong and healthy. Limited space; **preregistration is required.**





# KENT COUNTY PUBLIC LIBRARY

497 S. Red Haven Lane, Dover | 302-744-1919



## HEART STRINGS

**Saturday, February 10 – 11:00 a.m.**

Ages 18 and up. Create a unique heart-themed string art craft. Participants must supply their own hammer. All other supplies included. Limited space; **preregistration is required – no walk-ins.** (Program held before normal library business hours. Only those who have preregistered permitted.)

## LEAP DAY LINE DANCE

**Friday, March 1 – 7:30 – 8:30 p.m.**

Ages 18 and up. Join us for a free one-time line dance instruction for beginners – just in time for Sadie Hawkins Day. Limited space; **preregistration is required – no walk-ins.** (Program held after normal library business hours. Only those who have preregistered permitted.)

## ANNUAL VALENTINE'S SHAKESPEARE LIVE READING – OTHELLO

**Sunday, February 11 – 1:30 p.m.**

Ages 16 and up. Join us for a live reading of Shakespeare's historical tragedy, *Othello*. Participate by taking a part, or stay to listen as the magic unfolds. Preregistration encouraged.

## KENT COUNTY MOBILE LIBRARY SCHEDULE

(Begins Tuesday, January 2, 2024)

### MONDAY

8:30 - 10:00 a.m.	FIRST STATE MILITARY ACADEMY
10:30 - 11:30 a.m.	CHESWOLD FIRE HALL
1:00 - 2:00 p.m.	DAFB PLAYGROUND
2:30 - 4:00 p.m.	DELAWARE VETERAN'S HOME

### WEDNESDAY

10:30 - 11:30 a.m.	MODERN MATURITY CENTER
12:00 a.m. - 1:00 p.m.	KENT COUNTY ADMINISTRATIVE COMPLEX
2:30 - 3:15 P.M.	SPRING MEADOW (SMYRNA)
3:30 - 4:15 p.m.	CHESWOLD FIRE HALL

### TUESDAY

9:30 - 11:00 a.m.	HARTLY FIRE HALL
11:30 a.m. - 12:30 p.m.	BYLERS (ROUTE 8)
2:00 - 3:00 p.m.	FELTON FIRE HALL
3:30 - 4:30 p.m.	FREDERICA FIRE HALL

### THURSDAY

9:30 - 11:30 a.m.	CALVARY CHRISTIAN ACADEMY
NOON - 1:30 PM	WESTMINSTER VILLAGE
3:00 PM - 5:00 PM	TRES SORELLE (WYOMING)

**Kent County Public Library and Mobile Library will be closed December 8, 24, 25 & 26, January 1 & 15 and February 19. The Mobile Library will be off-road the last week of December.**

## BOOK DONATIONS

While we appreciate your continued generosity, the Friends of Kent County **WILL NOT be accepting book or audio/video donations in December, January or February** due to inclement weather safety issues. Please do not put donate items in the outside book return or leave them outside the library.

# Kent County Parks & Recreation with Kent County Public Library

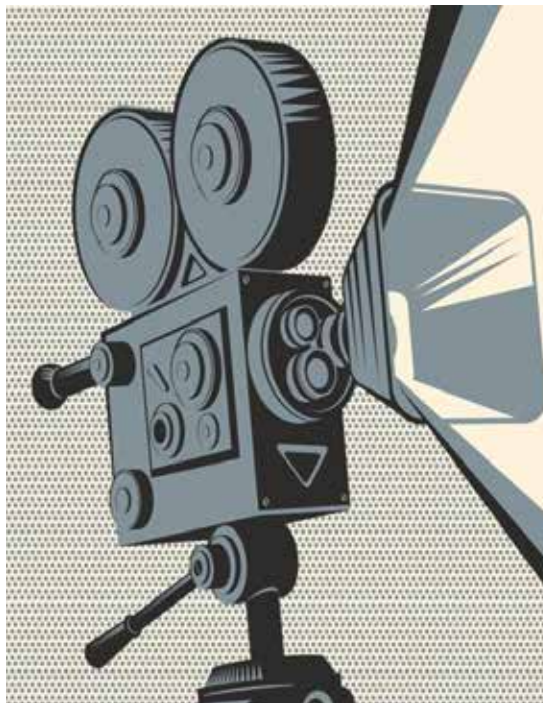
**FREE ENTRY**

ADMIT ONE	ADMIT ONE	ADMIT ONE
<b>The Little Mermaid</b>	<b>Elemental</b>	<b>Spider-Man: Across the Spider-Verse</b>
Rated PG Rec Center Cinema Movie Starts 6:30 PM	Rated PG Rec Center Cinema Movie Starts 6:30 PM	Rated PG Rec Center Cinema Movie Starts 6:30 PM
<b>01.6.2023.</b>	<b>01.20.2023.</b>	<b>02.10.2023.</b>

## Indoor Family Movie Night

Please bring your own blankets and chairs

Kent County Recreation Center, 1683 New Burton Rd. Dover DE 19904



### Be on the lookout for Upcoming Spring Movies & Dates





**Left to right: Commissioner Paul Hertz, Commissioner Jody Sweeney, Commissioner Allan Angel, former Director Harry VanSant, Commissioner Terry Pepper and Commissioner Joanne Masten.**

## Brecknock pavilion named after former Kent County community services director

Retired for 14 years, Harry VanSant clearly hasn't been forgotten by Kent County Levy Court.

Now, the longtime director of community services will always be remembered, via a pavilion named in his honor at Brecknock County Park.

In a surprise ceremony in Mr. VanSant's honor Wednesday, officials paid tribute before a sign with his name was unveiled atop the structure.

After the dedication, attended by approximately 50 people, he reflected on the honor and those who contributed to it.

"I'm not a take-the-credit type of person, never was," he said. "It's nice, ... 14 years after retirement, to be honored like this. It's really significant and nice to see some people I haven't seen in years.

"Parks are about people; they're not about individuals. No matter how you look at it, the people around me made it happen — the people on the Parks and Recreation commission, the staff members, people I didn't know who had an interest in the people."

*\*This story originally appeared in the Delaware State News and at BaytoBayNews.com written by Craig Anderson.*

Mr. VanSant, 74, was a county employee for 36 years, including 21 as director of community services.

During that time, according to a resolution issued by the county and presented by Levy Court Commissioner Allan Angel on Wednesday, the honoree "was instrumental in the acquisition and development of Brecknock, Browns Branch, Big Oak Hunn Nature, Lebanon Landing County Parks, and the St. Jones River Greenway."

It went on to read, "Mr. VanSant was a prominent supporter of funding for an indoor Kent County Recreation Center, which was eventually built at Kesselring Park in 2016."

Levy Court Commissioners Terry Pepper and Jody Sweeney offered remarks about Mr. VanSant before the audience, along with Parks and Recreation director Jeremy Sheppard.

Afterward, Commissioner Angel said that "Harry is a legacy for the Parks and Recreation system, and his legacy is not just in the dirt and the bricks and mortar that resulted from his time; it's also from the legacy he instilled on the employees that worked for him and who carried on his love of parks and recreation and will continue to carry (it) on."

KENT COUNTY PARKS AND RECREATION  
1683 NEW BURTON ROAD  
DOVER, DE 19904

PRSRST STD  
U.S. POSTAGE  
**PAID**  
DOVER, DE  
PERMIT #23

ECRWSS  
POSTAL CUSTOMER



## KENT YOUTH BASKETBALL LEAGUE

This recreational league values diversity and inclusion at all levels and will strive to be a positive experience for its players, teams, and coaches. Players will be encouraged to play ethically, honestly, with fairness, hustle and enthusiasm.

**WE BELIEVE THAT HARD WORK AND PLAYING TO THE BEST OF ONE'S ABILITY IS MORE IMPORTANT THAN THE OUTCOME OF GAMES!**

**VOLUNTEER COACHES NEEDED!**

Call 302-744-2495 to volunteer

# \$65

\*INCLUDES A TEAM SHIRT

**SPACE IS LIMITED IN EACH DIVISION**

**ROOKIE DIVISION**

**PRACTICES & GAMES**

**6 - 7:15 PM**  
TUESDAYS starting 3/5

**YOUTH JUNIOR & REG DIVISIONS**

**PLAYER SHOWCASE**  
2/21 & 2/26

**PRACTICES 6 & 7 PM**  
2/28 & MONDAYS starting 3/4

**GAMES 6 & 7 PM**  
WEDNESDAYS starting 3/6

**SCAN TO REGISTER**



**SCAN ME**