

Kent County LEVY COURT

Serving Kent County with Pride



Community Newsletter & Parks, Recreation
and Library Activity Guide

Spring 2025

follow us!



'Like' us!

@KCLevyCourt



About the LEVY COURT

Levy Court is your County government. Kent County Levy Court is comprised of seven elected Commissioners: six are elected from the districts in which they reside, and the seventh is elected at-large to represent the entire county. The Commissioners serve at the will of the electorate and answer solely to their constituents. Since the Commissioners are elected officials, it is customary to refer to them with the designation of Honorable.

Levy Court responsibilities include: enacting planning and land use ordinances; providing parks and recreation facilities; establishing fees; providing emergency medical services; 911

communications; emergency management; approving sewer system construction; establishing the yearly tax rate and overseeing the county departments that support the mission of Levy Court. The Commissioners appoint a County Administrator who is responsible for managing the day-to-day operations of county government.

Levy Court offices are located at 555 Bay Road. Residents may call 744-2300 to reach a County Office.

For more information on Levy Court, please visit our website at www.kentcountyde.gov.



Hon. Joanne Masten
President
Commissioner, 1st District
302-270-1747



Hon. Jeffrey Hall
Commissioner, 2nd District
Committee: Planning Services
302-632-0757



Hon. Allan F. Angel
Commissioner, 3rd District
Committee: Administration
302-382-6735



Hon. Robert J. Scott
Vice-President
Commissioner, 4th District
Committee: Public Safety
302-505-0198



Hon. Jody Sweeney
Commissioner, 5th District
Committee: Community Services
302-943-7328



Hon. Paul Hertz
Commissioner, 6th District
Committee: Public Works
302-505-2310



Hon. Terry Pepper
Commissioner, At-Large
Committee: Finance
302-697-9194

About the ROW OFFICES

Kent County has four Row Officers: each of which is an elected official. Row Officers serve four year terms and each is empowered to manage their office. Each row office performs a distinct function within the County Government.

Row Officers are held accountable to the electorate and it is customary to refer to them with the designation of Honorable. These offices are open Monday through Friday from 8:00 A.M. to 5:00 P.M.

REGISTER OF WILLS:

Hon. Douglas "DJ" Cox
Douglas.Cox@kentcountyde.gov
302-744-2330

Chief Deputy - Dianne M. Rager
Dianne.Rager@kentcountyde.gov
302-744-2328

RECORDER OF DEEDS:

Hon. Eugenia Thornton
Eugenia.Thornton@kentcountyde.gov
302-744-2321

Deputy - Joel Gartner
joel.gartner@kentcountyde.gov
302-744-2318

CLERK OF THE PEACE:

Hon. Brenda Wootten
Brenda.Wootten@kentcountyde.gov
302-744-2346

Deputy - Patricia A. Brown
Trish.Brown@kentcountyde.gov
302-744-2347

SHERIFF:

Hon. Norman Barlow
Norman.Barlow@kentcountyde.gov
302-736-2161

Chief Deputy - Robert Daddio
Robert.Daddio@kentcountyde.gov
302-736-2161

Kent County PHONE DIRECTORY

Kent County Administrative Complex 555 Bay Road Dover, DE 19901

Levy Court	302-744-2305
Assessment Office	302-744-2401
Building Permits & Inspections	302-744-2451
Code Enforcement	302-744-2452
Community Development	302-744-2480
Economic Development	302-678-3028
Engineering	302-744-2430
Facilities Management	302-744-2357
Finance	302-744-2386
Tax Section	302-744-2341
GIS/Mapping	302-744-2416
Information Technology	302-744-2365
Parks & Recreation	302-744-2495
Personnel	302-744-2310
Planning	302-744-2471

Kent County Emergency Services Building 911 Public Safety Boulevard Dover, DE 19901

Emergency Communications	302-735-2200
Emergency Management	302-735-3465
Emergency Medical Services	302-735-2180

Kent County Library 497 South Red Haven Lane Dover, DE 19901

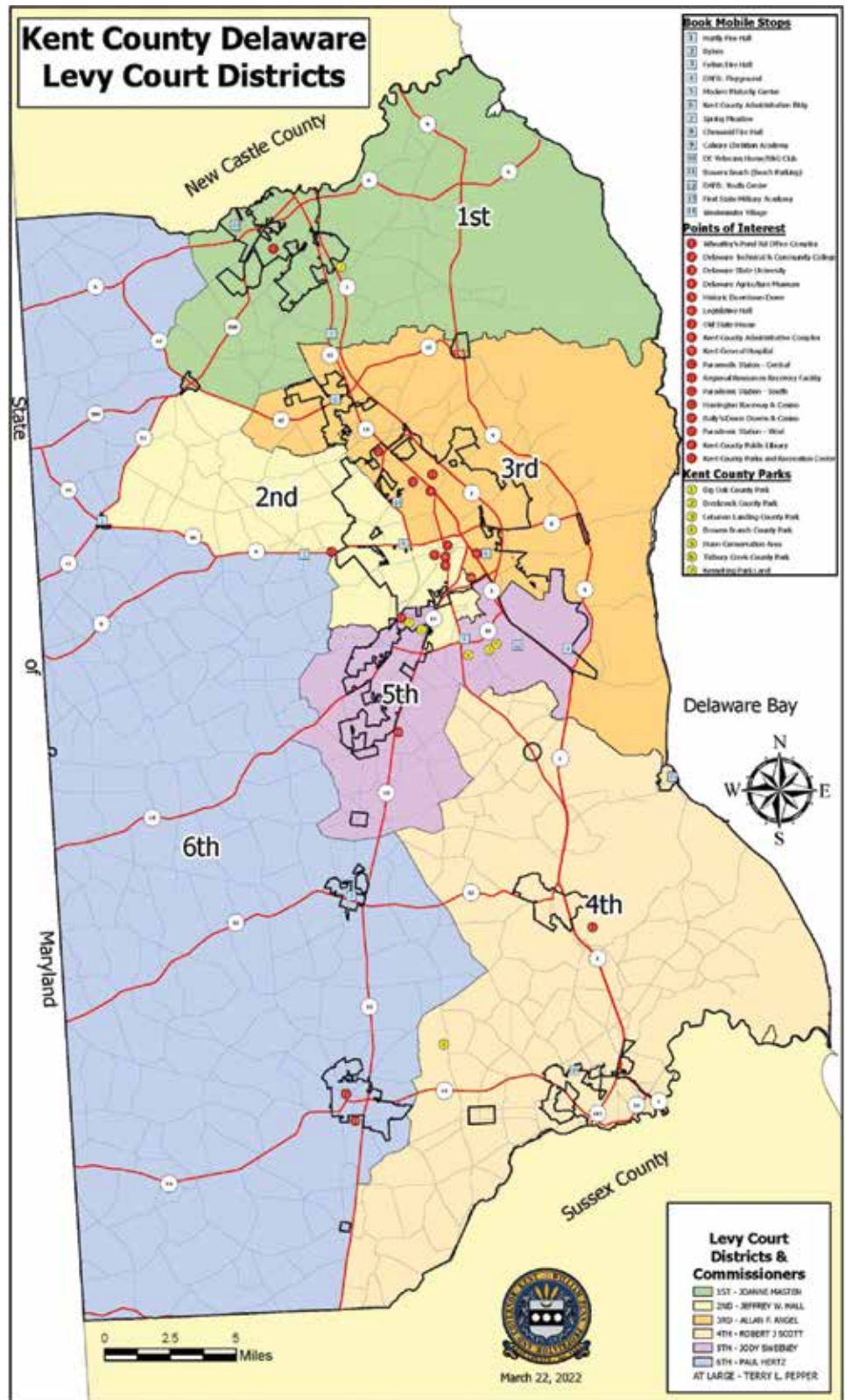
Library Services	302-744-1919
------------------	--------------

Kent County Parks and Recreation 1683 New Burton Road Dover, DE 19904

Main Number	302-744-2495
-------------	--------------

Kent County Wastewater Treatment Plant 139 Milford Neck Road Milford, DE 19963

Wastewater Facilities	302-335-6000
-----------------------	--------------



Kent County Levy Court Changes Leadership: MAKES HISTORY

On November 5th, Kent County residents re-elected all three Levy Court Commissioners up for reelection: Joanne Masten (1st district), Allan Angel (3rd district), and Jody Sweeney (5th district), as well as Clerk of the Peace Brenda Wootten. However, January 7th, 2025 marked a historic new era in Kent County leadership.

Joanne Masten was elected President of the Levy Court, succeeding Terry Pepper, who served five terms

on the Levy Court and twice as president with dedication and commitment. President Masten, now in her second term, looks forward to a bright future for Kent County.

“As we step into this new chapter for our county, my focus is on creating opportunities that uplift every community. Leadership change brings a fresh perspective, and I’m committed to working with all of you to address challenges head-on and ensure our county remains a

place where everyone can thrive,” said Joanne Masten.

Joining President Masten in this new chapter is Bob Scott, named Vice President of the Kent County Levy Court. Mr. Scott succeeds Allan Angel, who served as Vice President from 2021-2025. Mr. Scott brings a wealth of experience and dedication to his role. Together, President Masten and Vice President Scott are poised to lead Kent County toward a bright and prosperous future.



Seated: Terry Pepper, Joanne Masten, Robert Scott. Standing: Allan Angel, George “Jody” Sweeney, Jeffrey Hall, Paul Hertz

Unlawful Restrictive Covenants Exist in HISTORIC DEEDS, PUBLIC HELP REQUESTED

Black History Month encourages reflection upon advances resulting in the elimination of discriminatory laws and unfair practices in our nation's past.

An example of these discriminatory laws and practices are race-based Restrictive Covenants, which have been unenforceable since 1948 and illegal since 1968. Even so, there is no federally mandated process to systematically eliminate this offending language from property ownership documents.

Many states – Delaware included – passed laws that prevent the recording of property documents discriminating against people for race, color, creed, religion, sex, sexual orientation, gender identity, disability, age, marital status, familial status, source of income, national origin, ancestry, or housing status. (9 Del C. 41 §9605(b)).

However, just because discriminatory restrictive covenants are illegal does not mean that they do not still exist within the deeds online database dating back to 1874 or our historical property records books dating back to 1646.

In 2018, in concert with the NCC Recorder of Deeds, Delaware lawmakers provided a way to redact and strike discriminatory language from older deeds and other property records. (9 Del C. 41 §9628)

While these covenants are now illegal, they can be shocking and hurtful if discovered in deeds or HOA/Condominium paperwork.

With over 6,000,000 documented pages already recorded and 200 or more new multipage documents added a day, the Recorder of Deeds office does not have the staff to proactively seek out and eliminate illegal language.

Therefore, we invite the public to help us by bringing it to our attention. Find the form we designed for this purpose in the Community Relations page of our website.

Please get in touch with the Recorder of Deeds at Eugenia.Thornton@kentcountyyde.gov or call (302) 744-2321 to learn more or to volunteer to help with this project.

Foreclosure Help IS OUT THERE

Because everybody needs a little help now and then the Kent County Sheriff's office would like to get the word out that there is help.

A home is not only a substantial financial investment but also a source of pride. The loss of a home, due to unexpected events such as unemployment, illness or divorce,

can be financially and personally devastating.

One missed loan payment doesn't have to send you down the path to foreclosure. The key is to act quickly. If you can't make your next mortgage payment, or have already missed one, contact your lender or loan servicer right away. Let them

know about your situation and see if you can find a solution that will allow you to stay in your home.

Here are some helpful links about foreclosure prevention and help. Remember, if you have fallen behind on your payments, there are alternatives to foreclosure. There are resources that are available in Kent County and these links can also be found on our newly designed webpage, <https://www.kentcountyyde.gov/My-Government/Departments/Sheriffs-Office>

Our office staff are available Monday through Friday 8 a.m. to 5 p.m. if you need assistance.

<https://www.kentcountyyde.gov/My-Government/Departments/Sheriffs-Office>

<https://attorneygeneral.delaware.gov/fraud/cpu/mlmsa/>

<https://www.destatehousing.com/maintain/foreclosure-prevention/>



Kent County Public Library Clerk to Present at PRESTIGIOUS ALA CONFERENCE ON NEW ZEALAND-DELAWARE PEN PAL PROGRAM

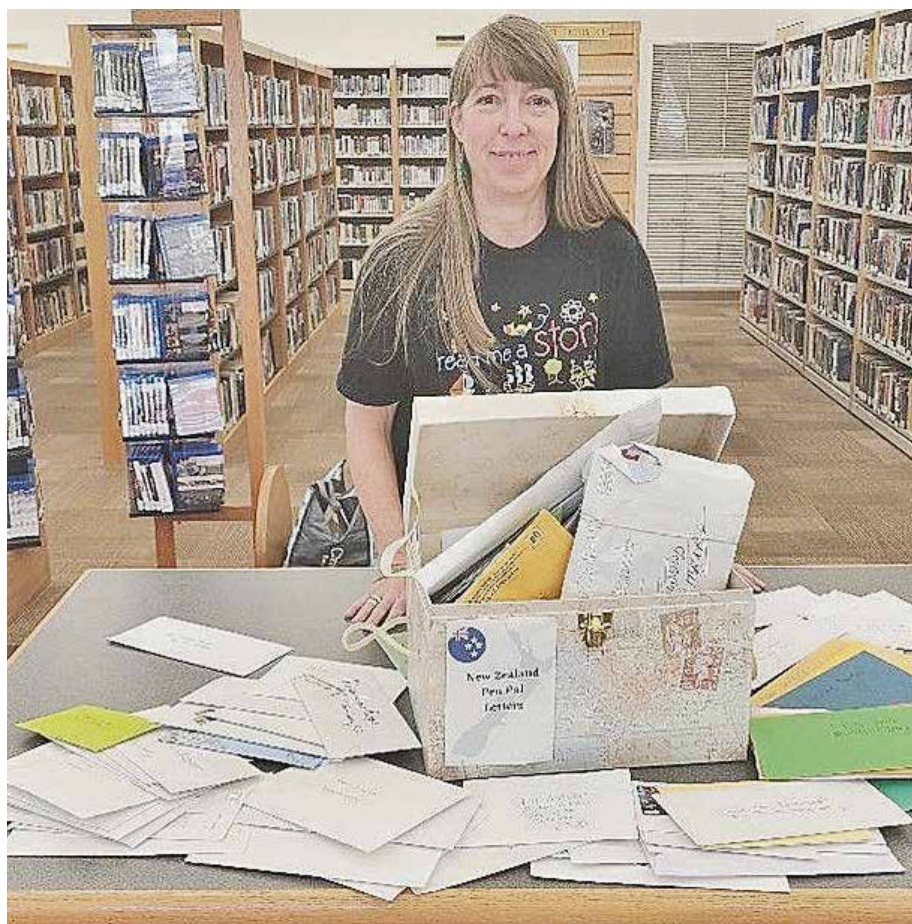
Robin Agar, Library Clerk, Kent County Public Library has been selected by the American Library Association (ALA) to provide a presentation on the library's popular and successful New Zealand-Delaware Pen Pal program at the 2025 Annual ALA Conference in Philadelphia in June 2025.

"This is a significant milestone," said Hilary Welliver, Kent County's Librarian and Assistant Director of Community Services. "Even individuals with successful careers have never been invited to present. It is very exciting and rewarding to see Kent County's efforts recognized at the national level."

The ALA Conference is the largest Professional Librarian Conference in the northern hemisphere.

[Click here to learn more about the pen pal program and the ALA Conference.](#)

International Pen Pal Program with New Zealand | Programming Librarian



Spring Holidays & Trash Collection Schedule

Good Friday Friday, April 18

Memorial Day Monday, May 26

Juneteenth Thursday, June 19

Trash Services, One Day Later,
For All Customers

Remodel Underway to Expand and Modernize KENT COUNTY 911 DISPATCH CENTER

The Kent County 911 Dispatch Center has embarked on a significant remodel to replace aging equipment, improve infrastructure, and expand capacity from 18 to 22 dispatch positions.

The phased project ensures the center remains fully operational throughout construction and is slated for completion by mid to late

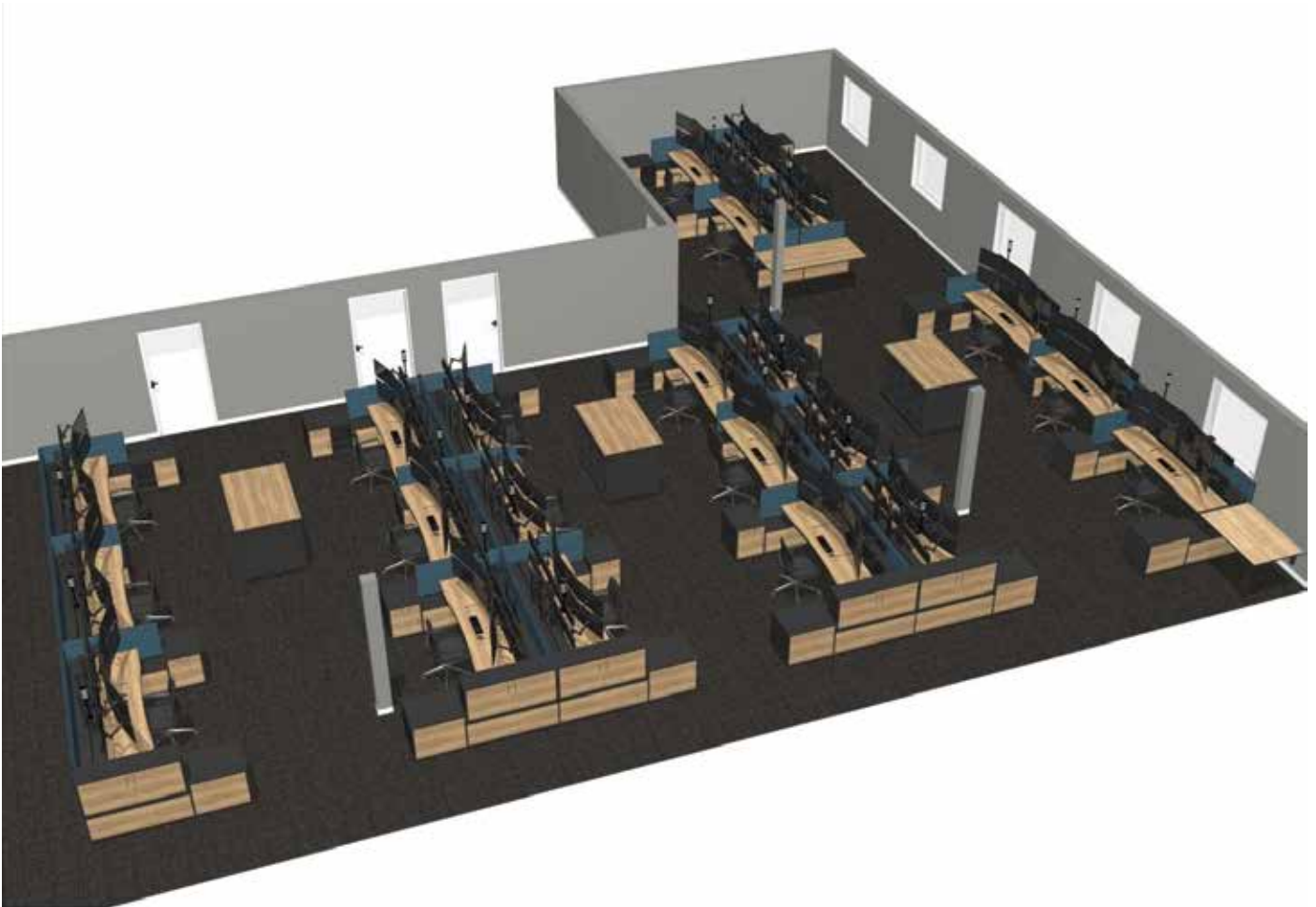
February.

Key upgrades include modern ergonomic dispatch consoles, durable new flooring, enhanced acoustic wall installations, and updated electrical and data infrastructure.

To maintain uninterrupted 911 services, the project is being executed in carefully planned phases. Dividing

the work into sections allows dispatchers to continue coordinating emergency responses seamlessly while construction progresses.

When completed, the remodel will expand the center's capacity to 22 dispatch positions, enhancing flexibility and responsiveness during emergencies and peak demand periods.



Kent County Public Safety Enhances Services WITH TWO NEW PARAMEDIC SUBSTATIONS

Kent County Public Safety is excited to announce the construction of two new paramedic substations, strategically located in Harrington and Frederica. These modern facilities represent a transition from shared spaces within local fire departments to independent paramedic substations, ensuring optimized service delivery for our residents.

The new Harrington substation will serve as a vital hub for southern Kent County, while the Frederica substation is poised to enhance coverage along the U.S. Route 1 corridor and surrounding communities. Both locations were selected based on a thorough analysis of historical and anticipated service needs, including call volumes and response times.

"These new substations underscore our dedication to providing top-tier emergency medical care to our residents," said John Tinger, Acting Public Safety Director.

"By establishing independent facilities, we're enhancing service efficiency and reinforcing our commit-



ment to public safety."

Each substation will feature modern amenities with facilities designed to support the health and well-being of our paramedics.

These improvements will empower our Emergency Medical Services (EMS) teams to continue delivering exceptional care under any circumstances.

Construction on both substations is

set to begin in early 2025, with anticipated completion by the end of the year.

As these projects progress, we'll share updates and milestones to keep our community informed.

Kent County Public Safety thanks residents for their ongoing support and looks forward to serving our growing communities more effectively with these new facilities.



Douglas "DJ" Cox, ELECTED REGISTRAR OF WILLS

Kent County welcomes a new Registrar of Wills, Douglas "DJ" Cox, who succeeds The Honorable Harold Brode who served the County 10 years.

DJ lives in Frederica with his wife Tiffanie, daughter Callie and son Spencer. Douglas Cox is a graduate of Lake Forest high school. He also earned an associate's degree in criminal justice from Delaware Technical Community College.

DJ is excited to be the Kent County Registrar of Wills and honored to help the Kent County community. He has a passion for the importance of community.

DJ is the youngest Registrar of Wills to be elected to this office in about 40 years.

Kirstin Coning Named 2024 Kent County Employee of the Year FOR EXCEPTIONAL IT SUPPORT AND INNOVATION



Kirstin Coning was honored as the 2024 Kent County Employee of the Year, after being named September 2024 Employee of the Month. She excelled among 11 peers for her dedication and skill as the Computer Support Technician II in the Department of Administration-Office of Information Technology.

Starting with Kent County

in August 2021 as a Computer Support Technician I, Kirstin was promoted to her current role in May 2024. She administers Office 365, Microsoft Exchange, and manages all Microsoft 365 applications. Kirstin played a key role in the transition to Office 365 and initiated the acquisition of a remote monitoring tool for help desk technicians.

Director of Planning Services Sarah Keifer and IT Director Donna Barnes praised Kirstin for her engaging attitude, technical skill, and ability to assist less tech-savvy staff. They highlighted her proactive problem-solving and innovative ideas for improving Kent County's technology.



Pictured: Donna Barnes, Jeff Hall, Paul Hertz, Kirstin Coning, Terry Pepper, Allan Angel, and Robert Scott

Employees of the Month

SAMANTHA FAULKNER

OCTOBER 2024



**Samantha
Faulkner**
Department of
Finance -
Tax Office

Kent County Department Heads selected SAMANTHA FAULKNER from the Department of Finance - Tax Office as the October 2024 Employee of the Month.

Sam is a Tax Clerk II in the Tax office and started with Kent County in August 2020. She began her career with the County as a Tax Clerk I, promoted to a Tax Clerk II in August 2022.

Sam serves as a mentor and trainer to the new Tax Clerks, sharing her advanced knowledge of tax and sewer payment collections while also overseeing mobile homes and pay-

ment plans. She has done an excellent job of administering the monitions process and maintaining records for tax sales while working in conjunction with the Attorney, Sheriff Office, Inspections and Enforcement, and the Sewer Department.

According to the Director of Finance, Susan Durham, "Sam is a great asset to the Tax Office. She is always upbeat and positive, and willing to help wherever it is needed. She provides great customer service, and her research skills are excellent.

Sam is always willing to take on new responsibilities. She enjoys learning and is setting her sights on continued growth within the County."

Congratulations Samantha on a job well done!

TRACY HATFIELD

NOVEMBER 2024



Tracy Hatfield
Register of
Wills Office

Kent County Department Heads selected TRACY HATFIELD from the Register of Wills Office as the November 2024 Employee of the Month.

Tracy is a Wills Clerk II in the Wills office and started with Kent County in June 2023. She began her career with the County as a Wills Clerk I, quickly promoted to a Wills Clerk II in December 2023.

Tracy sets the atmosphere for the office as she is the first person most people talk to when calling, emailing, or coming into the Register of Wills Office. She greets everyone with a smile and is always polite, courteous,

helpful, and kind to everyone. She assists the customers by asking

and answering all their questions to determine what steps they need to take to transfer their loved one's assets and then assists them with the completion of the paperwork. Tracy provides excellent customer service and professionalism while still being patient, warm, and caring as she assists our residents through their most trying times.

According to Chief Deputy Register of Wills, Dianne Rager, "Tracy is innovative and always looking for ways to improve the workflow by making suggestions on changing of forms, processes or information given to the public. She continues to excel and rise to the occasion no matter what task she is assigned. Her willingness to jump in and help whoever, whenever is one of her many qualities that contributes to her excellence in customer service. We are lucky to have Tracy as one of our team."

Congratulations Tracy on a job well done!

JUAN "NEIL" MARTINEZ

DECEMBER 2024



**Juan "Neil"
Martinez**
Planning Services
Department

Kent County Department Heads selected NEIL MARTINEZ from the Planning Services Department as the December 2024 Employee of the Month.

Neil is a Housing and Community Development Specialist I in the CDBG Section of the Planning Services office and started with Kent County in June 2021. He began his career with the County as a Maintenance Worker I in Facilities Management, quickly promoted to a Maintenance Worker II in February 2022. Neal then transferred to the Planning Services department as a Housing and Community Development Specialist I in October 2022.

Neil is responsible for managing the entire housing rehabilitation process from beginning to end. This includes preparing applications of assistance for qualifying Kent County residents; research-

ing mortgages, liens, property ownership; assisting with monitoring all construction, repairs or alterations done on the dwelling by contractors; researching target areas for eligible clients; organizing bid packages, holding pre-bid meetings, and checking contractor references; assisting with home inspections and determining the scope of work for the housing project.

According to Director of Planning Services, Sarah Keiffer "Neil's patience and quiet demeanor are tremendous assets in working with both rehabilitation clients and contractors. His technical skills, especially his HVAC certification, have enabled us to provide even better service to clients as well as assist staff in Inspections and Enforcement. Quite simply Neil is a hard and dependable worker who not only assisted the Community Development Section in managing a substantial backlog but also ensured we did not fall behind when another staff member was out for extended leave. We are lucky to have Neil as part of the Planning Team."

Congratulations Neil on a job well done!

KENT COUNTY LEVY COURT, COMMUNITY SERVICES DEPARTMENT

Upcoming Programs and Activities for Recreation, Parks, and Libraries



Spring 2025

**KENT COUNTY
PARKS AND RECREATION
&
KENT COUNTY
RECREATION CENTER**

1683 New Burton Rd.
Dover, DE 19904

Office Hours:

Monday – Friday,

8:00am – 5:00pm

Phone: 302-744-2495

Email:

ParksRec@KentCountyDE.gov

www.KentCountyDE.gov

Parks and Recreation Commission

Kevin Zimmerman, Chairman	4th District
John Stant III, Vice Chairman	2nd District
Walter Carroll	6th District
Ed Coker	1st District
James E. Long	5th District
Brian J. Michalski	At Large
Walter Waite, Jr.	3rd District

Mission Statement:

Our mission is to plan, promote and develop recreational facilities and activities consistent with the needs of all Kent County residents for now and the future.

Commission Goals:

1. To promote the health, welfare and safety of all recreational participants
2. To monitor recreational facilities and programs
3. To study and identify needed recreational facilities and services
4. To support the Park and Recreation Division in serving all Kent Countians
5. To fulfill responsibilities delegated by Kent County Levy Court under Article III of the Parks and Recreation Commission Bylaws
6. To protect and conserve natural resources
7. To promote an awareness of public recreational facilities in Kent County
8. To incorporate technological resources into the County recreational planning and delivery system
9. To promote and develop Greenways as recreational resources
10. To function as a recreational advocate on behalf of the population of Kent County
11. To work in conjunction with other agencies to enhance recreational resources
12. To expand recreational and leisure activities
13. To insure compliance with provisions for open space, preservation and management
14. To identify and recommend funding sources that support parks and recreation opportunities

Accepted by Kent County Levy Court 8/22/2000

REGISTRATION PROCEDURES

• Registration will be accepted through the mail, in-person or on-line on a first-come, first-served basis. **NO PHONE IN REGISTRATION WILL BE ACCEPTED.** Cost of activity must be paid in full when registering except when stated differently. Please follow registration procedures listed below.

ONLINE REGISTRATION

Online Registration catalog can be accessed via secure.rec1.com/DE/kent-county-de/catalog. MasterCard, Visa and Discover Card **payments are processed through Authorize.net (which will read Kent County Levy Court on statement);** however, refunds must be processed through Kent County Parks and Recreation; allow up to 2 weeks for processing. All other refund policies apply.

CREDIT CARD USE POLICY

Kent County Parks and Recreation cares about the safety of your credit card information. We will no longer accept mailed or phoned in credit card payments. Credit card payments (Visa, MasterCard, Discover) can be made via our online registration catalog (CivicRec). Kent County Parks and Recreation can only accept credit card payment by authorized account holder as displayed on the card.

PROGRAM ACCOMMODATIONS

The Kent County Parks and Recreation invites individuals to enjoy our programs, parks, and facilities. It is the policy of the Kent County Levy Court that all programs be accessible to all individuals as provided in Section 504 of the Rehabilitation Act of 1973. If you or the person(s) you are registering need modification for your program of interest, please contact Mike Rigby at 302-744-2495 or email at michael.rigby@KentCountyDE.gov before registering to discuss this matter.

TEXT MESSAGE NOTIFICATION

Through our registration software vendor, CivicRec, we have the capabilities of sending text message notifications directly to your mobile phone. The text message notification system would only be used for the program you are currently participating in and relate only to important messages such as cancellations, changes to schedule, or other necessary updates. In order to receive the text message notifications, you must submit your mobile carrier name when signing up for an account. If you have any questions regarding this helpful program, please call our office.

REFUND POLICY

Registration fees for recreation programs/activities must be paid in advance and shall be refunded in full to the payer of record if the County cancels the program/activity. If a participant cancels his/her participation in a program at least **five (5) days** prior to the first scheduled day, a full refund shall be paid less a **\$5** processing fee pursuant to County ordinance. Refunds will not be given for any other reason.

GENERAL INFORMATION

- Classes and activities are subject to cancellation for any reasonable cause.
- For weather and last minute cancellation information, please view our website at kentcountyde.gov/home and facebook.com/KentCountyParksandRec. Timely program cancellation notifications will be done by email or text notification from Staff.
- Please make sure that the instructor is present before dropping your child off at a program
- Arrive to pick up your child at least five minutes before the program's scheduled closing. Failure to pick up your child on time may result in expulsion from the program.
- A child may be expelled from a program with no refund after notifying parent of disciplinary problems.
- The Department may photograph programs and participants for publicity purposes, such as the brochure, facebook, twitter, etc.
- The Department has the right to adjust any of the program details in the brochure including fees, locations, instructors, times, days and starting dates.

WAIVER AND RELEASE OF LIABILITY AND INDEMNITY AGREEMENT

I hereby acknowledge that in using the facilities, programs and equipment of Kent County Parks and Recreation, I do so entirely at my own risk and I assume the risk of any injury and/or damage while engaging in any physical exercise or activity or use of any facility on the premises. This assumption of the risk includes, without limitation, my use of the gymnasium, athletic courts, lobby, hallways, athletic fields, parks, sidewalk, parking lot, seating, or any equipment in the facility/park. I further agree to assume the risk in participating in any activity, class, program, instruction, or any event sponsored by Kent County Parks and Recreation (Kent County Levy Court).

By executing this Agreement, I HEREBY WAIVE, RELEASE AND FOREVER DISCHARGE, Kent County Levy Court and its past, present and future administrators, partners, employees, insureds, assigns, agents, and representatives in their personal and professional capacities (collectively "Kent County Parks and Recreation"), from all claims, demands, injuries, damages, actions or causes of action, and from all acts of active or passive negligence on the part of such entity, its servants, agents, or employees of any nature whatsoever, including attorneys' fees and costs arising out of or connection with the aforementioned activities. I further agree to indemnify and hold harmless Kent County Levy Court from any claims, demands, injuries, damages, actions or causes of action, loss, liability, damage or cost which Kent County Levy Court may incur due to my presence at or use of the facility. I further agree that the foregoing warranty, waiver and indemnity agreement is intended to be as broad and inclusive as permitted by the law of the State of Delaware and that if any portion is deemed to be invalid, it is expressly agreed that the remaining terms shall remain in full legal force and effect.

ARTS & CRAFTS

ART 101 FOR HOMESCHOOLERS

Ages: 7-12 Fees: \$85
Days: Thu Time: 1:00–3:00pm
Sess: Mar 20–Apr 17 AC# HSART320

The Dover Art League, 21 W. Loockerman St., Dover. Designed specifically for homeschoolers, this dynamic art class invites students to explore their creativity through a variety of hands-on projects. Over the course of the class, young artists will dive into different materials such as paint, clay, and mosaics, discovering new techniques and finding their unique artistic voice. From the vibrant colors of paint to the tactile experience of clay, students will work with a wide range of materials to bring their ideas to life. This class is all about trying new things, encouraging students to explore different styles and methods as they uncover what excites them most about art. By the end of the course, students will have a portfolio of creative projects, each one reflecting their personal journey in art. This class is perfect for homeschoolers eager to add more creativity and fun to their learning experience! ***All materials included.** Instructor: Rebecca Walsen. Min 5, Max 15.

ART IN THE OPEN

Ages: 7-12 Fees: \$85
Days: Fri Time: 11:00am–1:00pm
Sess: Apr 25–May 23 AC# AITO425

The Dover Art League, 21 W. Loockerman St., Dover. Join us each week for a refreshing afternoon of outdoor creativity, surrounded by the inspiring scenery of Dover! In this springtime art class, homeschoolers will meet at the Dover Art League, gather their supplies, and take a short walk to a new location to set up for our plein air art project! We'll sketch, paint, and collage scenes from our surroundings, discovering how art lives in every part of the world around us. We'll break for lunch together, discussing our creations and sharing ideas. This unique series is a chance for homeschoolers to connect, enjoy nature, and experience the freedom of creating art outside! Each week, our spot changes, bringing new perspectives and inspiration, with indoor sessions at the DAL for inclement weather days. Bring your lunch and get ready for an art adventure under the spring sky! ***All materials included.** Instructor: Rebecca Walsen. Min 5, Max 15.



ART YOUR WAY!

Ages: 10-14 Fees: \$80
Days: Sat Time: 10:00am–12:00pm
Sess: Apr 19–May 10 AC# AYW419

The Dover Art League, 21 W. Loockerman St., Dover. Join us for an exciting art adventure where young artists can explore, experiment, and express themselves! In this hands-on class, students will learn key art techniques — color, shape, movement, composition — that spark creativity. Each week, they'll practice a new skill and use it as a foundation to create their own unique piece, embracing personal style and imagination. This class offers students a fun, supportive space to dive into art and develop their creative voice, whether they're experienced or new to the world of art. Let's make art that's as unique as you are! ***All materials included.** Instructor: Debbie Brockmeyer. Min 5, Max 12.

BEGINNER AND ADVANCED HAND CROCHET OR KNITTING DESIGN

Ages: 13 & up Fees: \$65
Days: Tue Hours: 5:30–7:30pm
Sess: Mar 18–Apr 1 AC# CROKNI318
Sess: Apr 8–22 AC# CROKNI408

Kent County Administrative Complex, Room 126A, 555 Bay Rd, Dover. The beginner class will learn how to make a scarf and potholders, participants will keep all projects made. The advanced class will learn how to make their own projects. **(Please indicate on registration form whether you are a crocheter or knitter, beginner or advanced.) Parent must stay if child is under 18.** Instructor: Manh Nguyen, with over 40 years of teaching experience. **For a list of class supplies, please call Manh at 302-530-9525.** Min 3, Max 15.

BEGINNER STAINED GLASS

Ages: 16+ Fees: \$150
Days: Wed Time: 2:00–4:30pm
Sess: Mar 19–Apr 23 AC# BSG319

The Dover Art League, 21 W. Loockerman St., Dover. In this Beginner Stained Glass Class, you'll dive into the beautiful art of stained glass and create your own stunning project from start to finish! Learn essential skills like glass cutting, pattern making, grinding, and project layout. Students will also master foiling, soldering, cleaning, polishing, and applying patina to give your piece a professional finish. By the end of the course, every student will leave with a completed stained glass creation to proudly display. No experience necessary — just bring your creativity and get ready to shine! ***All materials included.** Instructor: Cathy Batista. Min 5, Max 8.

COLOR SPLASH CREATIONS

Ages: 7-12 Fees: \$65
Days: Mon Time: 6:00–8:00pm
Sess: Apr 21–May 5 AC# CSC421

The Dover Art League, 21 W. Loockerman St., Dover. In this fun and creative class, young artists will dive into the basics of watercolor and acrylic painting! Kids will learn foundational techniques to paint beautiful landscapes, exploring how to blend colors, create textures, and bring scenes to life on canvas. Whether they're new to painting or looking to sharpen their skills, this class is perfect for exploring color, imagination, and the joy of making art! ***All materials included.** Instructor: Kevin Solomon. Min 5, Max 15.

MINI ART EXPLORERS

Ages: 4-7 Fees: \$50
Days: Thurs Time: 5:30–7:00pm
Sess: Apr 10–May 1 AC# MAE410

The Dover Art League, 21 W. Loockerman St., Dover. Welcome to Mini Art Explorers, a class designed for young artists ages 4-7 to jump into the world of creativity! In a safe and supportive environment, kids will explore a variety of materials, starting with familiar tools like pencils, markers, and crayons before moving on to exciting new mediums like paint, mixed media, and air-dry clay. Through guided projects, children will learn essential skills like brainstorming, planning, and even embracing mistakes — all while having fun and discovering their unique artistic voices. Let's get messy, make something amazing, and unleash your natural creativity! ***All materials included.** Instructor: Katie Jaywork. Min 5, Max 12.

PERFECTING YOUR PALETTE (FOR ADULTS!)

Ages: 16+ Fees: \$80
Days: Sun Time: 10:00am–12:00pm
Sess: Apr 6–Apr 27 AC# PYPFA406

The Dover Art League, 21 W. Loockerman St., Dover. Perfecting Your Palette is back, and this time it's all about exploring creativity on canvas for adults! In this beginner-friendly class, you'll learn to build and layer with acrylics, creating dynamic effects through shading, highlighting, and shadowing. This medium-paced class includes plenty of breaks to allow for layering, questions, and practice. Explore the basics of color theory, vibrant and monochrome painting, brush techniques, and mixing media to add texture and depth to your work. You'll not only gain confidence with a canvas but also discover your own artistic style as you blend, layer, and create unique pieces. ***All materials included.** Instructor: Dierra Cooper. Min 5, Max 12.

ARTS & CRAFTS

PHOTOGRAPHY FOR BEGINNERS

Ages: 16+ Fees: \$100
Days: Sun Time: 10:00am-12:00pm
Sess: May 4-June 8 AC# PHOTBEG504

The Dover Art League, 21 W. Loockerman St., Dover. Do you have a camera, but still use the auto settings? Do you want maximum control over your images to achieve exactly what you envision? Then this class is for you! In this 6-week course, students will learn the basics of photography including: Exposure, Aperture, Shutter speed, Basic editing & more! Students will have the opportunity during class hours to get outside and practice the techniques they learn. All you need is a DSLR camera and a notebook! The editing portion will be taught via a projector, but students can bring their own laptop if they'd like. Instructor: Jarred Knorr. Min 5, Max 15.

SEWING MADE EASY AND FUN

Ages: 13 & up Fee: \$65
Days: Mon Hours: 5:30-7:30pm
Sess: Mar 17-31 AC# SEW317
Sess: Apr 7-21 AC# SEW407

Kent County Administrative Complex, Room 126A, 555 Bay Rd, Dover. Participants will learn sewing machine basics: operation, connect fabric, sew on a button and make a buttonhole (if your machine has one). The class will also cover how to hem a skirt, pants, shorts, dress, tunnel elastic, make a tie belt and repair a garment (supplies not included). **Participants will need to bring their machine and instruction manual. Parent must stay if child is under 18.** Instructor: Manh Nguyen, with over 40 years of teaching experience. **For a list of class supplies, please call Manh at 302-530-9525.** Min 3, Max 12.

SKETCH SKOOL 101

Ages: 7-12 Fees: \$65
Days: Sat Time: 1:00-2:30pm
Sess: May 10 - 31 AC# SS510

The Dover Art League, 21 W. Loockerman St., Dover. Learn one of the foundational elements of art - drawing! In this engaging class, participants will learn the essentials of sketch pencils and the magic of bringing artwork to life with just lead and imagination! Sketching is a foundational skill for young artists, helping them explore important techniques such as facial and body proportions, shading, and creating a 3D effect on paper. This class is perfect for beginners looking to build confidence in their skills and develop a strong base in the world of art. ***All materials included.** Instructor: Dierra Cooper. Min 5, Max 12.

CAMPS

YOUTH PICKLEBALL CLINIC

Ages: 8-16 Fee: \$35
Days: Mon Hours: 9:00-11:30am
Sess: Apr 21 AC# YPC421

Kent County Recreation Center, 1683 New Burton Rd., Dover. This camp is designed to introduce kids to the sport of pickleball or improve the skills of those that already play. The camp will feature introductory skills, age-appropriate drills as well as learning the rules and scoring of the game. Participants should wear comfortable sneakers. Equipment will be provided but feel free to bring your own paddle if you have one. Instructors: Lynn Price and Kim Holden. Min 8, Max 24.



EDUCATIONAL

BREATH WORK & SOUND BATH MEDITATION SERIES

Ages: 16 & up Fee: \$30
Days: Wed Hours: 6:30-7:30pm
Sess: Apr 2 AC# SBMS402

Location TBD, Clayton. Combining the power of breath with healing sound, this class assists students in taking control of their stress response, sleep quality & energy levels regardless of age or health. Students will practice proper breathing techniques while listening to gentle tones designed to induce an almost immediate feeling of well-being. Guided meditations will accompany for part of the class. Bring yoga mat/cushion or use one provided. Led by certified Breath Coach & Meditation Instructor Audra Littleton. For more information, call Audra Littleton at 302-530-8220. Visit www.Find-Ur-Balance.com for more info. Max 10.



EDUCATIONAL

LAW OF ATTRACTION & MAKING YOUR MIRACLES

Ages: 16 & up Fee: \$51
Days: Wed Hours: 6:30–8:30pm
Sess: Apr 16 & Apr 23 AC# LOA416

Kent County Levy Court, Room 221, 555 Bay Rd, Dover. We've all heard "happiness comes from within", but with so many external factors imposing on our lives, how do we shift our focus from "out there" to "in here"? Straight-forward and easy to understand, this workshop is packed with information, insights, and techniques to dramatically improve the quality of your life in ways you've never imagined. Led by Law of Attraction Coach Audra Littleton. Min 5, Max 15.

LEARN TO FLY FISH

Ages: 10 & adult Fee: \$50
(children under the age of 18 must be with a paying adult)
Days: Tue & Thu Time: 6:00–7:00pm
Sess: Apr 29–May 8 & Fri May 9
AC# FLY429

Brecknock Park, 80 Old Camden Road, Camden. Will meet at the Harry Vansant Pavillion. This is a beginner's course geared towards the first timer. This class will help you learn how to assemble and rig a proper fly rod and reel. Instructions to include knot tying, various types of casts, fly identification, reading water for fish locations, various tools used and general knowledge of fly fishing. Casting instruction will be done on the premises. Please bring a fly rod if you have one; some will be available to use. On the last day of the class (Friday May 9th), you will fish. Min 10, Max 20.

REIKI "1"

Ages: 16 & up Fee: \$74
Days: Wed Time: 6:30–8:30pm
Sess: Apr 30 & May 7 AC# REIKI430

Kent County Levy Court, Room 220, 555 Bay Rd, Dover. Reiki is a safe, simple and natural form of energy medicine. It is a complete system for self-care that compliments traditional medical care and promotes the body's natural ability to heal. Participants will learn the Reiki hand positions and complementary tools designed to be used as self-treatments, as well as for family and friends. Each participant receives traditional level 1 attunements, and a completion certificate. For more information, call instructor Audra Littleton at 302-530-8220. Max 12.

FITNESS

AQUA AEROBICS CARDIO BLAST

Ages: 18 & up Fee: \$75
Days: Tue & Thu Time: 6:00–7:00pm
Sess: Mar 25–Apr 24 AC# FMMCAQ325
Sess: May 6–Jun 5 AC# FMMCAQ506

Modern Maturity Center, 1121 Forrest Ave, Dover. Take advantage of water's natural resistance to get an aerobic and toning workout without the wear and tear on your joints. This program focuses on cardiovascular fitness and range of motion and is a great workout for seniors. Participants must bring their suit and towel. Instructor: Betsy Gustafson, personal trainer and fitness instructor with 30+ years of experience. Min 20, Max 25.

VIRTUAL BODY TONING

Ages: 16 & up Fee: \$55
Days: Mon & Wed Time: 5:30–6:30pm
Sess: Mar 10–May 5 AC# BTONE310
(NO 3/19,4/21,4/23)

Online classes, Zoom link provided for each class. This class concentrates on those trouble areas (thighs, hips, and abdomen), as well as firming up the upper body (arms, back, shoulders, and chest). Participants should bring a mat and two 1 to 5 lb. hand weights. Instructor: Kathy Kennedy-Ratajack. Min 10, Max 30.



VIRTUAL YOGA

Ages: 16 & up Fee: \$35
Days: Mon & Wed Time: 6:35–7:05pm
Sess: Mar 10–May 5 AC# VYOGA310
(NO 3/19,4/21,4/23)

Online classes, Zoom link provided for each class. Yoga begins with simple breathing exercises and stretches intended to clear the mind as well as open up the lungs. Most people beginning yoga will experience measurable progress in their strength and flexibility after a week or two of daily practice. Clothing should be comfortable to allow free movement. Participants must bring a yoga sticky mat. Instructor: Kathy Kennedy-Ratajack. Min 10, Max 30.

ZUMBA GOLD PLUS

Ages: 16 & up Fee: \$65
Days: Mon & Wed Time: 5:00–6:00pm
Sess: Mar 3–Apr 9 AC# FZGP303
Sess: Apr 21–May 28 AC# FZGP421
(NO 5/26)

Kent County Recreation Center, 1683 New Burton Road, Dover. Come join this fun and easy to follow Zumba class. This version of Zumba allows you to dance at your own pace. Incorporates verbal instruction in addition to hand cueing to further assist in the teaching process. This is a low impact dance party where you choose the intensity you want. You will groove to Latin, R&B, Oldies, Big Band, Rock, Dance Hall, Pop, and more. There is something for everyone and every fitness level. This is a no judgement zone, with tons of fun! Hope to see you there! Instructor: Denise Jackson. Min 10, Max 25.

LEAGUES

BOYS HIGH SCHOOL BASKETBALL LEAGUE

Ages: 13 - 18 Fees: \$400
(\$50 Early Bird Discount for registrations before Wed 5/9 at 5:00pm)
Sess: TBD AC# BHSBL

Kent County Recreation Center, 1683 New Burton Rd, Dover. **School teams only.** League features a 7-week competitive basketball experience with a single elimination tournament the final week (top 6 teams make the tournament). Teams have the opportunity to reserve a half court for practice immediately prior to scheduled games. Games will be 20-minute halves with a running clock (2 timeouts per team per half, the game clock will be stopped the final minute of each half for in-bounding, fouls, and injuries) officiated by DIAA officials. Teams must provide game jerseys.



LEAGUES

BOYS HIGH SCHOOL JV BASKETBALL LEAGUE

Ages: 13-18 Fees: \$400
(\$50 Early Bird Discount for registrations before Wed 5/9 at 5:00pm)
Sess: TBD AC# BJVBL

*Kent County Recreation Center, 1683 New Burton Rd, Dover. **School teams only.** League features a 7-week competitive basketball experience with a single elimination tournament the final week (top 6 teams make the tournament). Teams have the opportunity to reserve a half court for practice immediately prior to scheduled games. Games will be 20-minute halves with a running clock (2 timeouts per team per half, the game clock will be stopped the final minute of each half for in-bounding, fouls, and injuries) officiated by DIAA officials. Teams must provide game jerseys.*

CO-ED SUMMER SOFTBALL LEAGUE

Ages: 16 & up Fee: \$525
Days: Sun Time: 9:00am
Sess: June 1 AC# COEDSOF601

*Browns Branch County Park, 1415 Killens Pond Road, Harrington. 6-week regular season (12 games) with playoffs to end the league. All teams make playoffs, 1st & 2nd place trophies awarded. League will be ASA governed. **Contact Brent Mollohan, 302.744.2491 for more information.***

GIRLS HIGH SCHOOL BASKETBALL LEAGUE

Ages: 13-18 Fees: \$400
(\$50 Early Bird Discount for registrations before Wed 5/9 at 5:00pm)
Sess: TBD AC# GHSBL

*Kent County Recreation Center, 1683 New Burton Rd, Dover. **School teams only.** League features a seven-week competitive basketball experience with a single elimination tournament the final week (top 6 teams make the tournament). Teams have the opportunity to reserve a half court for practice immediately prior to scheduled games. Games will be 20-minute halves with a running clock (2 timeouts per team per half, the game clock will be stopped the final minute of each half for in-bounding, fouls, and injuries) officiated by DIAA officials. Teams must provide game jerseys.*

HORSESHOE LEAGUE

Ages: 16 & Up Fee: \$50 (2-person teams)
Days: Mon Time: 6:00pm
Sess: May 12 AC# HORSELG512

*Brecknock County Park, 80 Old Camden Rd., Camden. **TEAM ENTRY ONLY.** Teams will play approximately 10-12 weeks with 9 matchers per evening. Teams MUST supply their own horseshoes. T-Shirts will be awarded to top teams in League/Division.*

KENT YOUTH VOLLEYBALL LEAGUE

Ages:
Junior Division (10-13) AC#JRKYVL611
Rec Division (14-17) AC#RDKYVL611
Days: Mon (Practice) Fees: \$75
Wed (Games) Time: 6:00-8:00PM
Sess: June 11-Aug 6
(NO 7/2)


*Kent County Recreation Center, 1683 New Burton Rd, Dover. Teams will play games on Wednesday nights and have practice on Monday nights. A full schedule of team practices and games will be distributed at the beginning of the league. **Wednesday June 11 and Monday June 16 will be a player showcase and nights. Teams are co-ed.** Games are "best 2 of 3" matches played to 15 points with rally scoring. The first game will be June 25. **Team T-Shirts will be provided.***

Additional volunteer coaches and assistants are needed. If you are over 18 and would like to volunteer, please call the Recreation Office at 302-744-2495. **(Background checks are required for all coaches and assistants and will be administered free of charge.)**


Kent County Parks & Recreation

KENT YOUTH SOCCER LEAGUE


Season begins March 2025



REGISTER TODAY!



SCAN ME



Registration IS OPEN NOW!

<https://secure.ract.com/DE/kent-county-de/catalog>

Phone: 302-744-2495
 E-mail: KYSL@KentCountyDE.gov

LEAGUES

NFL YOUTH FLAG FOOTBALL LEAGUE

Ages: 7-14 Fee: \$80 (includes Jersey)
 Days: Wed (Practice) Days: Fri (Games)
 Sess: Mar 21-May 23
Ages: 7 to 10 AC#YNFLFL321A
 Wed & Fri, 6:00-7:00pm
Ages: 11 to 14 AC#YNFLFL321B
 Wed & Fri, 7:00-8:00pm
 (NO 4/18)

Kent County Recreation Center, Turf Field 1683 New Burton Road, Dover. The largest flag football program in the nation offers a fun, non-contact football experience for boys and girls. This non-contact league emphasizes on throwing and catching. Parents or guardians are encouraged to volunteer as coaches and assistant coaches. If you are over 18 and would like to volunteer, please call the Recreation Office. **(Background checks are required for all coaches and assistant coaches and will be administered free of charge.)** For more information, call Joe Paugh at 302-744-2486 or email at joseph.paugh@kentcountyyde.gov

PICKLEBALL LADDER LEAGUE

Ages: 18 & up Fee: \$30/person
 Days: Thu Time: 6:00pm
 Sess: Mar 13 AC# PBLEAG313

Kent County Recreation Center, 1683 New Burton Rd., Dover. The league will play for 6 weeks. Basic understanding of Pickleball rules and game play is necessary. Trophies awarded to 1st and 2nd place finishers.



SCRAMBLE GOLF LEAGUE

Ages: 16 & up Fee: \$125(2-person)
 Days: Mon Time: 5:00pm
 Sess: Apr 14 AC# SCRAMG414

Jonathan's Landing Golf Course, 1309 Ponderosa Dr., Magnolia. Individuals who are interested in getting on a team should call the Recreation office. League will begin at 5:00pm on Monday, April 15. Greens fees & **cart will be \$27 per person per week. The fee is due by Tuesday, April 1.** The 12-15-week season ends with a scramble tournament and golf banquet. The league is handicapped by Kent County Parks and Recreation.



MUSIC/DANCE

ENGLISH COUNTRY DANCING

Ages: 18 & up Fee: \$50
 Days: Mon Time: 2:30-4:00pm
 Sess: Mar 24-May 5 AC# ECD324

Kent County Recreation Center, 1683 New Burton Rd., Dover. Skip a trip to the gym and try folk dancing for exercise! This class is designed for beginners, however experienced dancers are welcome to join. New steps and new dances will be taught each week. The class moves at the pace of the students. Singles and couples are welcome. All dances are taught and "called" by the instructor. Sneakers or flat, non-marking soles are best. English Country Dancing is seen in Colonial Williamsburg and the Jane Austen movies. This class is fun, easy and lightly aerobic. Great for homeschoolers! Great for seniors, too! Instructor: Jackie McCabe. Min 16.



KCRC BEGINNER SOUL LINE DANCING

Ages: 16 & up Fee: \$41
 Days: Tue Time: 6:30-7:30pm
 Sess: Apr 22-May 20 AC# KCRCSLD422
 Sess: May 27-June 24 AC# KCRCSLD527

Kent County Recreation Center, 1683 New Burton Rd., Dover. Looking for a great way to burn calories, meet new people, and improve your coordination while enhancing your dance moves? Look no further; Soul Line Dancing is for you. Come out and join the fun at our beginner level classes as you learn popular dances such as the Electric Slide, Wobble, Cupid Shuffle, Up-town Funk, and many more. Instructors: Chuck & Kelly Cooper of C & K Soul Line Dancing **will meet you in Boys & Girls Club Conference Center when you enter on the right. Min 10, Max 25.**



SPORTS INSTRUCTION

ADVANCED PICKLEBALL CLASS

Ages: 16 & Up Fee: \$65
 Days: Thu Time: 8:00-10:00am
 Sess: Mar 20-Apr 10 AC# APICKL320
 Sess: May 1-May 22 AC# APICKL501

Kent County Recreation Center, 1683 New Burton Rd., Dover. Are you ready to take your pickleball game to the next level? This course will cover intermediate-to-advanced pickleball skills such as: dinking, volleying, third shot drop, reset, lob, defend lob. Tactics will be taught for doubles play: serve, return of serve, transition to non-volley zone, going on attack at the non-volley zone. Min 8, Max 16.

BEGINNER PICKLEBALL CLASS

Ages: 16 & up Fee: \$65
 Days: Tue Time: 8:00-10:00am
 Sess: Mar 18-Apr 8 AC# PICKBEG318
 Sess: May 6-May 27 AC# PICKBEG506

Kent County Recreation Center, 1683 New Burton Rd., Dover. **This class is for beginners only.** Pickleball is designed for all skill and age levels and is very easy to learn. Knowledge of the game is not necessary. Basic drills, skills and rules of the game will be taught. Our indoor courts will make your Pickleball experience much more memorable. Min 8, Max 16.

DVA VOLLEYBALL CLINIC

Ages: 7-14 Fees: \$50
 Days: Sat Time: 9:00am-12:00pm
 Sess: Apr 26 AC# YVBC426

Kent County Recreation Center, 1683 New Burton Rd Dover. Participants will learn the fundamentals of volleyball including how to serve, dig, and SPIKE. Participants will receive instruction tailored to their individual age and ability level. Dynamic Volleyball Academy's clinics are designed specifically for the beginning male or female volleyball athlete. This program includes age-appropriate instruction, focusing on motor skills, ball skills, game skills and most importantly, fun!

INSTRUCTIONAL FLAG FOOTBALL

Ages: 5-7 Fee: \$55
 Days: Fri Time: 5:00-5:45pm
 Sess: Apr 4-May 9 AC# TIFB404
 (NO 4/18)

Kent County Recreation Center, Turf Field 1683 New Burton Road, Dover. This program is a great introduction to the fundamentals of Flag Football. Participants will receive training in fundamental skills of offense, defense, throwing, catching, and flag pulling. Min 12, Max 30.



INTERMEDIATE PICKLEBALL CLASS

Ages: 16 & up Fee: \$65
 Days: Tue Time: 10:30am-12:30pm
 Sess: Mar 18-Apr 8 AC# PICKINT318
 Sess: May 6-May 27 AC# PICKINT506

Kent County Recreation Center, 1683 New Burton Rd., Dover. Some previous experience of Pickleball is necessary. This class is designed for individuals who want to expand their knowledge and skills of the game. Serving, positioning, lob shots, dinking are just some of the skills that will be taught during this class. Min 12, Max 36.

KENT YOUTH BASKETBALL SKILL CLINICS

Fees: \$50
 Ages: 7-9 AC#YIB428A
 Day: Mon & Wed Time: 6:00p-7:00pm
 Ages: 10-12 AC#YIB428B
 Day: Mon & Wed Time: 7:00-8:00pm
 Sess: Apr 28-May 21

Kent County Recreation Center, 1683 New Burton Rd, Dover. Players will take part in basketball skills development clinics that will teach fundamental basketball skills including ball-handling, shooting, rebounding, and passing. Players will rotate through skill development stations and participate in scrimmages to further develop skills. Min 10, Max 48.

LEARN TO ICE SKATE/BEGINNER HOCKEY SKATING SCHOOL - 1

Ages: 4-14 Fee: \$96
 (Includes skate rental)
 Days: Wed Time: 6:55-7:45pm
 Sess: Apr 2-May 14 AC# LIS1402
 (NO 4/23)
 Days: Fri Time: 6:30-7:20pm
 Sess: Mar 21-May 9 AC# LIS1321
 (NO 4/11, 4/18)
 Days: Sat Time: 10:50-11:40am
 Sess: Mar 22-May 10 AC# LIS1322
 (NO 4/12, 4/19)

Centre Ice Rink, 18500 S. DuPont Hwy., Harrington. Learn to Ice Skate is devoted to teaching beginner skaters who are not interested in playing hockey basic skating skills. Beginner Hockey Skating School (BHSS- I) is devoted to teaching beginner skaters who are interested in playing ice hockey the basic skating fundamentals in hockey skates. **REQUIRED EQUIPMENT: Bike helmet or approved ice hockey helmet with cage, hockey or winter gloves, Rental skates are available at no extra charge.**

LEARN TO PLAY/BEGINNER HOCKEY SKATING SCHOOL - 2

Ages: 4-14 Fee: \$96
 (Includes skate rental)
 Days: Sat Time: 11:50am-12:50pm
 Sess: Mar 22-May 10 AC# LIS2322
 (NO 4/12, 4/19)

Centre Ice Rink, 18500 S. DuPont Hwy., Harrington. Beginner Hockey Skating School (BHSS- II) is devoted to teaching novice skaters who are interested in playing ice hockey and players who completed BHSS- I next level basic skating fundamentals and basic stick/puck skills in full equipment. Learn to Play is devoted to enhancing the hockey skills and game play basics needed to advance beginner players into youth ice hockey programs. Every week the players will also partake in some type of game to keep them coming back for more. **REQUIRED EQUIPMENT: Every participant is required to have a mouth guard, wear an approved ice hockey helmet with cage, elbow pads, gloves, cup, shin guards, shoulder pads, pants and stick. Rental skates are available at no extra charge.** Used equipment may be available to help offset the initial cost of starting hockey.

TOT INSTRUCTIONAL BASKETBALL

Ages: 4-6 Fees: \$45
 Days: Sat Time: 10:30-11:30am
 Sess: Apr 5-May 10 AC# TIB405
 (NO 4/19)

Kent County Recreation Center, 1683 New Burton Rd, Dover. Introduce your little ones to the fundamentals of basketball in a fun and engaging environment! Our Tot Instructional Basketball program is designed for young children to develop basic basketball skills, coordination and teamwork. Players will be introduced to fundamental skills like dribbling, passing and shooting through fun drills and activities that build confidence and motor skills. The main goal is to have fun! Min 10, Max 20.

TOT MULTI SPORT CLASS

Ages: 4-6 Fee: \$55
 Days: Thu Time: 4:00-5:00pm
 Sess: Mar 13-Apr 24 AC# TRCTM313

Kent County Recreation Center, 1683 New Burton Road, Dover. This class is a great introduction to a variety of sports for emerging athletes. This class will teach fundamentals on how to play various sports and how to play with others. A variety of sports will be covered including: Soccer, Football, Baseball, Hockey, Basketball, & Volleyball. If you have any questions about registering, please call Parks & Recreation at 744-2486 or email at joseph.paugh@kentcountytde.gov. Min 5, Max 15.

SPORTS INSTRUCTION

TOT & PARENT MULTI SPORT CLASS

Ages: 2-4 Fee: \$55
Days: Thu Time: 3:00-4:00pm
Sess: Mar 13-Apr 24 AC# TRCPTM313

Kent County Recreation Center, 1683 New Burton Road, Dover. This is a Parent and child class that is a great introduction to a variety of sports for both parents and their emerging athletes. Parents will work with their child to develop skills and a love for sports. This class will cover a variety of sports including Soccer, Football, Baseball, Hockey, Basketball, & Volleyball. If you have any questions about registering, please call Parks & Recreation at 744-2486 or email at joseph.paugh@kentcountyde.gov. Min 5, Max 15.

T-BALL

Ages: 4-6 (Co-ed) Fee: \$50
Days: Sat Time: 10:00am
Sess: Apr 5 AC# BPTBALL405
(NO games 4/19)

Brecknock County Park, 80 Old Camden Rd, Camden. The first 3 meetings will be practice. The last 3 meetings will be games. Players will be taught the basic knowledge of baseball. All hitting will be from a batting tee using a tennis ball. Teams will be co-ed. Each team member will bat every inning, and the main goal is to have FUN! **Payment is due by Friday, March 21. Please indicate T-shirt size on the registration form.** Additional volunteer coaches and assistants are needed. If you are over 18 and would like to volunteer, please call the Recreation Office. **(Background checks are required for all coaches and assistants and will be administered at the County Personnel Office.)**

PARENT AND TOT SWIM

Ages: 2-5 Fees: \$80
Days: Tue Time: 5:30-6:15pm
Sess: Mar 4 - Apr 1 AC# PTS304
Sess: Apr 29 - May 27 AC# PTS429

Lakeforest High School Aquatic Center, 5407 Killens Pond Rd, Felton. A fun-filled introduction to the aquatic environment. Participants will become comfortable in the water learning the basics of freestyle and floating on their front and back. Water skills will be taught through the use of games, songs, toys, and floatation devices. Parent must go in the water with child. Instructor: Michele Tucker. Min 5, Max 12.



TOURNAMENTS

ADULT PICKLEBALL ROUND ROBIN COMPETITION

Ages: 18 & up Fee: \$35/person per event
Days: Fri Time: 6:00-8:00pm
Sess: Mar 21
Women's Doubles AC# WOMENRR321
Mar 28
Men's Doubles AC# MENRR328
Apr 4
Mixed Doubles AC# MIXRR404

Kent County Recreation Center, 1683 New Burton Rd, Dover. Sign up with a partner for a fun, competitive night of Pickleball! Three events on three separate dates. Team round robin, play with same partner throughout the event. Great opportunity for practice with a partner prior to the summer tournament season. Two-minute rest periods between games.



YOUTH PICKLEBALL ROUND ROBIN COMPETITION

Ages: 11-16 Fee: \$35/person per event
Days: Fri Hours: 9:00-11:00am
Sess: Apr 25 AC# YOUTHRR425

Kent County Recreation Center, 1683 New Burton Rd, Dover. Sign up for a fun, competitive day of Pickleball! Introduction to competitive pickleball play for youth wanting to try a tournament style format. Individual round robin tournament play. Coaching is provided; assistance with scoring/rules of game is also provided. Instructors: Kim Holden, Lynn Price. Min 12, Max 24.





KENT COUNTY PUBLIC LIBRARY

497 S. Red Haven Lane, Dover | 302-744-1919



SPRING 2025 PROGRAMS & EVENTS

All programs are free, open to the public, and held at the Kent County Public Library, located at 497 S. Red Haven Lane, Dover unless stated differently. **Preregistration is required as noted.** Stop by the circulation desk or call (302) 744-1919 to register. You can also register online at www.tinyurl.com/KCPLcalendar (Parent or other responsible adult must be present in the library, including during programs, for any child/youth under the age of 16.)

The Library reserves the right to adjust program dates, times, maximum enrollment, and program/event cancellations.

It is the policy of the Kent County Levy Court that all programs be accessible to all qualified handicapped individuals as provided in Section 504 of the Rehabilitation Act of 1973. If you or the person(s) you are registering need reasonable accommodation for your program of interest, please contact the Kent County Public Library before registering to discuss the matter with the program coordinator(s).

The Library may photograph programs and participants for publicity purposes, including posting to social media sites. All programs are free and open to the public, unless stated differently. (Parent or other responsible adult must be present in the library, including during programs, for any child/youth under the age of 16.)

ALL AGES EVENTS

IRISH DANCE DEMONSTRATION

Wednesday, March 12 – 6:30 p.m.

Award-winning Hester Academy of Irish Dance is led by a fully certified Irish Dance teacher, registered with *An Coimisiún Le Rinci Gaelacha*, the Irish Dance Commission in Dublin, Ireland! Learn more about this popular tradition through an exciting Irish Dance Demonstration! Limited seating; first come, first served.

ST. PATRICK'S "FLASH MOB" – BAGPIPES!

Monday, March 17 – 12:00 noon

Some say that the sound of bagpipes has a primal quality that can stir emotions and memories. Find out for yourself when a member of the Delaware Celtic Society Pipe Band makes a brief appearance at KCPL on Saint Patrick's Day!

LOCAL AUTHOR SHOWCASE

Sunday, April 6 – 1:30 – 4:00 p.m.

Meet local and regional authors and illustrators who will have copies of their books available for sale and signing. At 1:30 p.m., special guest author Rachel J. Good, *USA TODAY* best-selling author with over 20 published novels set in Amish communities, will give readers a peek into the mysterious world of the Amish! Ms. Good will have copies of her books available for sale and signing after her presentation. (Rachel J. Good's appearance is sponsored by the Friends of Kent County Public Library.)

CREATIVE AGING: "JOY OF DRAWING"

Reception: March 25 – 5:30 – 7:30 p.m.

Public display: March 25 – April 5

View the artwork of the Creative Aging "Joy of Drawing" series recently led by Rebecca Howell, Delaware Museum of Art, for participants aged 55+. This program and show were made possible, in part, through a grant from the Delaware Division of Arts.

FREE COMIC BOOK DAY

Saturday, May 3, 1:00 – 5:00 p.m.

Thanks to our friends at *Born to Game*, Kent County Public Library will have comic books to give away – FREE – while supplies last. Visit us, and then head down to *Born to Game* (547 S. Red Haven Lane), for additional FREE selections! Explore this popular genre and celebrate comics with other fans.

YOUTH PROGRAMS

All programs are free and open to the public, unless stated differently. **Preregistration is required as noted.** Please call (302) 744-1919 or stop by the circulation desk to register. You can also register online at www.tinyurl.com/KCPLcalendar (Parent or other responsible adult must be present in the library, including during programs, for any child/youth under the age of 16.)

IMPORTANT NOTICE

KCPL's Children's Room will be CLOSED to the public on Wednesdays from 9:00 a.m. – 1:30 p.m. until April 9, 2025 to accommodate the AARP Tax-Aide Service and their client confidentiality.

STORY!TIME

Fridays – 10:00 a.m.

Preschoolers (age 6 and under), along with their accompanying adult(s), are invited to join us at the library every Friday morning for stories, songs, crafts and more! Special seed-themed story time on March 12 to celebrate the opening of KCPL's new Seed Library. (For groups of five or more, please give advance notice of your visit.)



KENT COUNTY PUBLIC LIBRARY

497 S. Red Haven Lane, Dover | 302-744-1919



PAWS FOR READING

Thursdays, March 6 & 20, April 3 & 17, May 1 & 15 – 6:30 p.m.

Bring your child to the library to read aloud for 10 minutes to a friendly therapy dog provided by PAWS for People. Teens and adults are welcome to read too! One reader per dog, per 10-minute reading session. First come, first served.

DELAWARE ANIME SOCIETY

Saturdays, March 8, April 12, May 3 – 1:00 – 4:00 p.m.

Ages 13 and up (firm). The Delaware Anime Society is for those with an interest in Japanese anime (animation), manga (graphic novels), cosplay, gaming, music and pop culture to meet in a fun and relaxed atmosphere.

KIDS BOOK BINGO

Sundays, March 30, April 27, May 4 – 2:00 p.m.

Ages 5-18. Kids! Play Bingo and win some fabulous books to add to your home collections. Games start promptly at 2:00 p.m.; we suggest early arrival, to select your game board and get settled. Five rounds each afternoon.

GROWING GREEN

Friday, March 14 – 4:00 p.m.

Ages 6-16 (firm). You bring the nylon pantyhose, and we'll supply the rest! The result will be a funny character that will grow "hair" from grass seeds! Preregistration encouraged; limited supplies available.

ST. PATRICK'S MATINEE

Monday, March 17 – 6:00 p.m.

Did you know that before he became James Bond, one of Sean Connery's earliest film appearances was in a movie about the king of the leprechauns? Enjoy a family film based on the Irish folktales of Darby O'Gill. A minimum of 10 preregistered participants required by March 12, otherwise the film will be canceled. (Rated G; 1 hr., 33 min.)

DOLLY PARTON'S IMAGINATION LIBRARY

In Delaware's Imagination Library program, children ages birth up to their 5th birthday receive a FREE book in the mail each month. Instill the habit of reading — and libraries, too! Get started at <https://lib.de.us/imagination/>



NATIONAL LIBRARY WEEK

April 6 – 12, 2025

"Drawn to the Library"

All programs are free, open to the public, and held at Kent County Public Library, unless stated differently. **Preregistration is required as noted.** Please call (302) 744-1919 or stop by the circulation desk to register. You can also register online at www.tinyurl.com/KCPLcalendar

LOCAL AUTHOR SHOWCASE

Sunday, April 6 – 1:30 – 4:00 p.m.

Meet one dozen of DelMarVa's most talented regional authors & illustrators who will have books available for purchase and signing. Our special guest will be *USA TODAY* best-selling author, Rachel J. Good, whose 20+ inspirational novels are set among American Amish communities. (*Rachel J. Good's appearance is sponsored by the Friends of Kent County Public Library.*)

LIBRARY CARD EARRINGS

Tuesday, April 8 – 6:30 p.m.

Ages 16 and up (firm). Celebrate National Library Week by crafting your own library card earrings! Led by jewelry artisan Keturah Goldsberry. Limited seating and supplies; **preregistration is required – no walk-ins.**

MOBILE LIBRARY INCENTIVE

April 7 – April 11

Visit the KCPL Mobile Library, "*The Friendly Library on the Highway*" at one of its weekly stops and receive a FREE special National Library Week bookmark (while supplies last).

NLW BOOK DISCUSSION: *THE LIBRARY BOOK* (Susan Orlean)

Wednesday, April 9 – 6:00 p.m.

Ages 16 and up. On the morning of April 29, 1986, a fire alarm sounded in the Los Angeles Public Library. The fire was disastrous. By the time it was extinguished, it had consumed 400,000 books and damaged 700,000 more. Investigators descended on the scene, but more than 30 years later, the mystery remains: Did someone purposely set fire to the library – and if so, who? Join us for a discussion of *The Library Book* by Susan Orlean and delve into the unsolved mystery of the most catastrophic library fire in American history. Participants should have read the book before the discussion.

COMING SOON! SUMMER READING

PROGRAM – Registration begins June 1st!



KENT COUNTY PUBLIC LIBRARY

497 S. Red Haven Lane, Dover | 302-744-1919



ADULT PROGRAMS

All programs are free and open to the public, unless stated differently. **Preregistration is required as noted.** Please call (302) 744-1919 or stop by the circulation desk to register. You can also register online at www.tinyurl.com/KCPLcalendar

BOOKED FOR LUNCH

Mondays, March 3, April 7, May 5 – 12:30 – 1:30 p.m.

Ages 16 and up. Bring your own brown bag lunch and discuss what you are currently reading with the group – no assigned book.

ARTS & LETTERS BOOK CLUB

Wednesdays, March 5, April 2, May 7 – 12:30 – 1:30 p.m.

Ages 16 and up. Read and discuss fiction and non-fiction books related to various arts and cultures. See a KCPL staff member for the month's selected title.

SPOTLIGHT ON DELAWARE HISTORY

Wednesdays – 6:30 p.m.

Ages 16 and up. While our “Diamond” state may be small, it is packed with fascinating stories and history. Limited seating; **preregistration for each session is required.**

March 19 — Point-to-Point Steeplechase:

Don your best hat and wear traditional black and white to learn about the famed Point-to-Point steeplechase races at Winterthur, which takes off every year on the weekend following that other derby in Kentucky. Program led by Winterthur staff.

April 30 — Entertaining at the White House with Alan DeValerio:

One hundred days have passed since Inauguration Day. Join former White House butler Alan DeValerio to learn the inside details about White House entertaining — hear the stories of those who have been taking care of our First Families since the Franklin Roosevelt administration! After the program, Alan's book, *A History of Entertaining in the Modern White House* will be available for purchase and signing.

May 21 — The Market at Belaire:

Today is International Tea Day! Proprietors Samantha Wright and Crystal Sulecki share the story of *The Market at Belaire*, located in Townsend, Delaware — a quaint farm store that hosts tea parties with flair.

SOCK MONKEYS

Wednesday, March 5 — 6:30 p.m.

Catherine Michalski shares her love of sock monkeys, those stuffed animals that are a mixture of folk art and kitsch, and their history, along with examples from her extensive personal collection. Limited seating; preregistration encouraged.

NEW! KCPL SEED LIBRARY

Opening Friday, March 14 – 11:00 a.m.

KCPL is growing a new type of knowledge within the community by opening a seed library. The seed library offers free vegetable, herb, and flower seeds to our adult users (ages 18 and up) with Kent County-issued library cards. Limit 3 packets per month, per cardholder. Fill out the Seed Library Log at the Circulation Desk to get started!

GOING GREEN BASKET RAFFLE

March 1-14; drawing March 17

Ages 18 and up only. Sign out library materials and drop your KCPL transaction receipt in the jar to be entered into the Friends of Kent County Library's “Going Green” Basket Raffle, celebrating the launch of the KCPL Seed Library! No purchase required.

GARDEN ART PROJECTS

Sunday, March 16 – 1:30 p.m.

Ages 16 and up. Looking for some ways to add unique touches to your garden to show off your personality? This fast-paced program offers 30 ideas in less than 45 minutes through a colorful PowerPoint presentation along with some project samples. Bring your own paper and pen to take notes. Limited seating; **preregistration required.**

STRONGER BONDS: CONNECTION AND RECONCILIATION

Wednesday, April 2 – 6:30 p.m.

Ages 18 and up. Let Reconciliation Day (April 2) inspire you to rebuild or strengthen your relationships. Marcia Moran, MS LPCMH, a licensed family therapist with over 30 years of experience, will coach participants in how to open up more, share experiences/work toward a common goal, and tap into their emotions to give meaning and purpose to their relationships. Limited seating; **preregistration is required.**

MUSTANG: AN AMERICAN LEGEND

Thursday, April 17 — 6:30 p.m.

Ages 16 and up. Presented on National Mustang Day, this program recounts the origins of the Ford Mustang and the factors that led to its initial success and lasting legacy. Limited seating; **preregistration required.**

AMISH LIFE

Sunday, April 6 — 1:30 p.m.

USA TODAY best-selling author Rachel J. Good, who has over 20 published novels set in Amish communities, will provide readers with a peek into the mysterious world of the Amish. Ms. Good will have copies of her books available for sale and signing after the presentation. Limited seating; first come, first served. (*Rachel J. Good's appearance is sponsored by the Friends of Kent County Public Library.*)



KENT COUNTY PUBLIC LIBRARY

497 S. Red Haven Lane, Dover | 302-744-1919



LE MORTE D'ARTHUR

Wednesday, May 14 — 6:30 p.m.

This Arthurian legend was popular in Wales before the 11th century, and has been prominent in literature, film, television, theater, comics, and other media ever since. Find out why this significant piece of medieval literature cast such a long shadow! Limited seating; **preregistration required**.

COMING SOON! ARTS IN THE PARK

Look for “Arts in the Park” to begin the Wednesday, May 28 at 6:30 p.m., in Brecknock Park. Check Facebook (“KCPLibrary”) for details

KENT COUNTY MOBILE LIBRARY SCHEDULE

(Effective March 1, 2025-May 31, 2025)

KCPL operates the only mobile library in Kent County. In addition to books and audio/visual materials, you can also pick up items placed on hold, return library materials, get a library card, sign up for library programs, use one of our public access laptops, enjoy limited printing services, and/or take advantage of our free public wi-fi hotspot. **Check out our new Facebook group at “Kent County Mobile Library (LINUS)”**

MONDAYS

9:00 – 9:30 a.m. Delaware Veteran’s Home

TUESDAYS

11:30 a.m. - 12:30 p.m. Frederica Senior Center
2:00 - 2:30 p.m. Byler’s Country Store (Dover)

WEDNESDAYS

10:15 – 11:00 a.m. Kent County Recreation Center
11:30 a.m. - 12:30 p.m. Kent County Administration Complex
2:00 - 3:00 p.m. Harmony at Kent Senior Living

THURSDAYS

9:00 – 11:00 a.m. Calvary Christian Academy (Elementary)
12:00 - 3:00 p.m. Calvary Christian Academy (Middle School)
3:30 - 4:30 p.m. Tre Sorelle

FRIDAYS

10:00 – 11:00 a.m. Spring Meadow
12:00 - 1:00 p.m. Westminster Village
3:00 - 4:00 p.m. DAFB (playground)

The Library and Mobile Library will be closed March 29, 30, 31 and May 12 (1-5), and May 27.

**FREE ONLINE SERVICES AVAILABLE
ONLY WITH YOUR KENT COUNTY-ISSUED LIBRARY CARD**
Visit <http://co.kent.de.us/kc-library.aspx>

Mango Languages – Over 70 world language courses expertly designed to adapt to a diverse range of learning needs, styles and backgrounds. Whether it is learning a new language, or brushing up on one you already know, start the conversation today.

HelpNow – On-demand, anytime, anywhere eLearning. Features homework help, skills-building, personalized eLearning tools, 24-hour writing lab, homework send question, adult learning center, and a foreign language lab. All services available in both English and Spanish.

JobNow – Provides online job coaching every day from 2:00 – 11:00 p.m. EST. Receive live job coaching, real-time interview practice, full-service resume lab, and 24/7 access to local job resources. Other features include resume assistance, skills-building and Spanish-speaking support.

VetNow – Connects users with an expert to learn more about eligible VA benefits and community resources. Interact with a live, real-time “veteran navigator” to job coaching, resume assistance, tutoring and testing support, career resources, skills-building, and Spanish-speaking support.

BOOK DONATIONS

The Friends of Kent County Public Library will resume accepting donations of used books and audio/visual items beginning March 2025. Donations must be boxed and in good, clean usable condition. Donations will only be accepted during **the first five days of each month** during normal library business hours until November 2025. *Please do not leave donated items outside the building or put them in our outside book return.* Copies of our complete donation policy are available at the KCPL Circulation Desk. We appreciate your consideration and generosity.

Kent County Parks & Recreation

Summer Sports Camps

DATES COMING SOON

Basketball Camps  

Field Hockey Camp  

Soccer Camps  

Lacrosse Camp  

Pickleball Camps  

Kent County Recreation Center 1683 New Burton rd. Dover DE



Kent County Parks & Recreation with Kent County Public Library

Family Movie Night

Bring Your Own
Chairs AND Your Favorite
Movie Snacks

All Movies Start at Dusk

FREE EVENT



ADMIT ONE

Friday, May 2, 2024

THE WILD ROBOT



ADMIT ONE

Friday, May 9, 2024

MOANA 2

For more information, check our Facebook Page
Kent County Recreation Center, 1683 New Burton Rd. Dover DE 19904





Kent County Parks & Recreation

SEASON STARTS
MARCH 21st

NFL YOUTH FLAG FOOTBALL

TWO AGE DIVISIONS:

7-10yrs Division

11-14yrs Division



For More Information or to Register:
Call: 302-744-2495 www.secure.rec1.com/DE/kent-county-de/catalog mail: ParksRec@kentcountype.gov



KENT COUNTY PARKS AND RECREATION
1683 NEW BURTON ROAD
DOVER, DE 19904

PRSR STD
U.S. POSTAGE
PAID
DOVER, DE
PERMIT #23

ECRWSS
POSTAL CUSTOMER



Earth Day 2025

Saturday April 19, 2025

9 a.m.-12 noon

**Brecknock County Park
Howell Mill Nature Center
80 Old Camden Road
Camden, DE 19934**

Kent County Parks and Recreation is looking for families, individuals, groups and volunteer organizations to help Kent County observe Earth Day 2025. Volunteers will be removing invasive species, planting native plants and performing a litter cleanup within Brecknock County Park.

There will be something for all ages and abilities to do. If available please bring loppers, hand pruners, shovels, and metal garden rakes. Kent County Parks and Recreation will have a limited amount of hand tools on site. Be sure to dress appropriately for outdoor work and the weather, wear long pants, long-sleeved shirts, work shoes or boots and bring work gloves. Snacks, hotdogs and beverages will be available for all volunteers.

**To pre-register click on the following link
secure.rec1.com/DE/kent-county-de/catalog select the
special events tab or you can register onsite the day of the event.
The registration table will be set up at the Howell Mill Nature Center.**

**For more information about this special public event, call:
Michael Rigby, Kent County Division of Parks and Recreation,
302-744-2492 or e-mail at: michael.rigby@kentcountymde.gov**