



KENT COUNTY

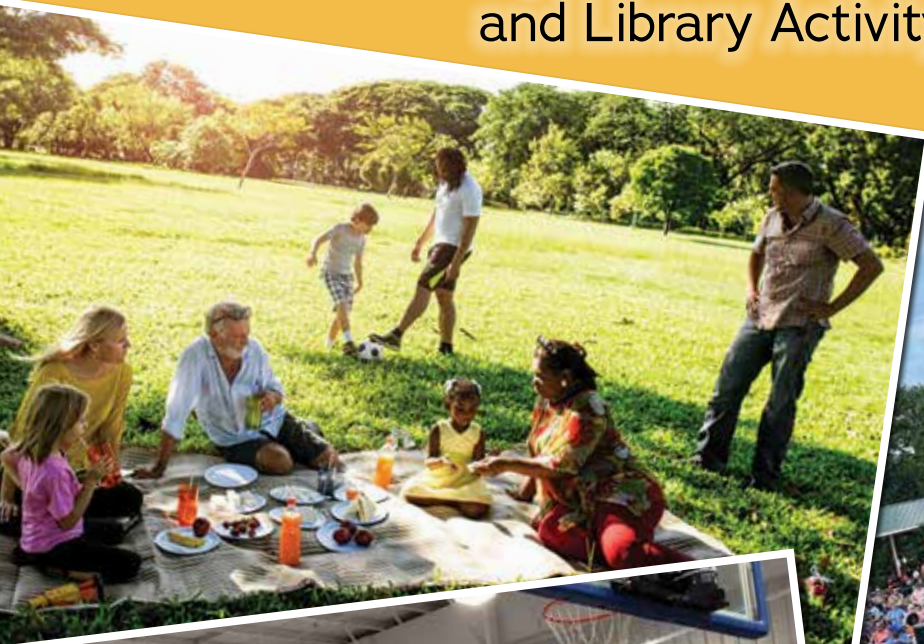
LEVY COURT

Serving Kent County with Pride

Summer 2025

Community Newsletter, Parks & Recreation
and Library Activity Guide

FINAL EDITION
DETAILS ON BACK



Follow us on
Facebook



Follow us
on X



About the LEVY COURT

Levy Court is your County government. Kent County Levy Court is comprised of seven elected Commissioners: six are elected from the districts in which they reside, and the seventh is elected at-large to represent the entire county. The Commissioners serve at the will of the electorate and answer solely to their constituents. Since the Commissioners are elected officials, it is customary to refer to them with the designation of Honorable.

Levy Court responsibilities include: enacting planning and land use ordinances; providing parks and recreation facilities; establishing fees; providing emergency medical services; 911

communications; emergency management; approving sewer system construction; establishing the yearly tax rate and overseeing the county departments that support the mission of Levy Court. The Commissioners appoint a County Administrator who is responsible for managing the day-to-day operations of county government.

Levy Court offices are located at 555 Bay Road. Residents may call 744-2300 to reach a County Office.

For more information on Levy Court, please visit our website at www.kentcountyde.gov.



Hon. Joanne Masten
President
Commissioner, 1st District
302-270-1747



Hon. Jeffrey Hall
Commissioner, 2nd District
Committee: Planning Services
302-632-0757



Hon. Allan F. Angel
Commissioner, 3rd District
Committee: Administration
302-382-6735



Hon. Robert J. Scott
Vice-President
Commissioner, 4th District
Committee: Public Safety
302-505-0198



Hon. Jody Sweeney
Commissioner, 5th District
Committee: Community Services
302-943-7328



Hon. Paul Hertz
Commissioner, 6th District
Committee: Public Works
302-505-2310



Hon. Terry Pepper
Commissioner, At-Large
Committee: Finance
302-697-9194

About the ROW OFFICES

Kent County has four Row Officers: each of which is an elected official. Row Officers serve four year terms and each is empowered to manage their office. Each row office performs a distinct function within the County Government.

Row Officers are held accountable to the electorate and it is customary to refer to them with the designation of Honorable. These offices are open Monday through Friday from 8:00 A.M. to 5:00 P.M.

REGISTER OF WILLS:

Hon. Douglas "DJ" Cox
Douglas.Cox@kentcountyde.gov
302-744-2330

Acting Chief Deputy - Aleyshia Young
aleyshia.young@kentcountyde.gov
302-744-2327

RECORDER OF DEEDS:

Hon. Eugenia Thornton
Eugenia.Thornton@kentcountyde.gov
302-744-2321

Deputy - Joel Gartner
joel.gartner@kentcountyde.gov
302-744-2318

CLERK OF THE PEACE:

Hon. Brenda Wootten
Brenda.Wootten@kentcountyde.gov
302-744-2346

Deputy - Patricia A. Brown
Trish.Brown@kentcountyde.gov
302-744-2347

SHERIFF:

Hon. Norman Barlow
Norman.Barlow@kentcountyde.gov
302-736-2161

Chief Deputy - Robert Daddio
Robert.Daddio@kentcountyde.gov
302-736-2161

Kent County PHONE DIRECTORY

**Kent County
Administrative Complex
555 Bay Road
Dover, DE 19901**

Levy Court	302-744-2305
Assessment Office	302-744-2401
Building Permits & Inspections	302-744-2451
Code Enforcement	302-744-2452
Community Development	302-744-2480
Economic Development	302-678-3028
Engineering	302-744-2430
Facilities Management	302-744-2357
Finance	302-744-2386
Tax Section	302-744-2341
GIS/Mapping	302-744-2416
Information Technology	302-744-2365
Parks & Recreation	302-744-2495
Personnel	302-744-2310
Planning	302-744-2471

**Kent County Emergency
Services Building
911 Public Safety Boulevard
Dover, DE 19901**

Emergency Communications	302-735-2200
Emergency Management	302-735-3465
Emergency Medical Services	302-735-2180

**Kent County Library
497 South Red Haven Lane
Dover, DE 19901**

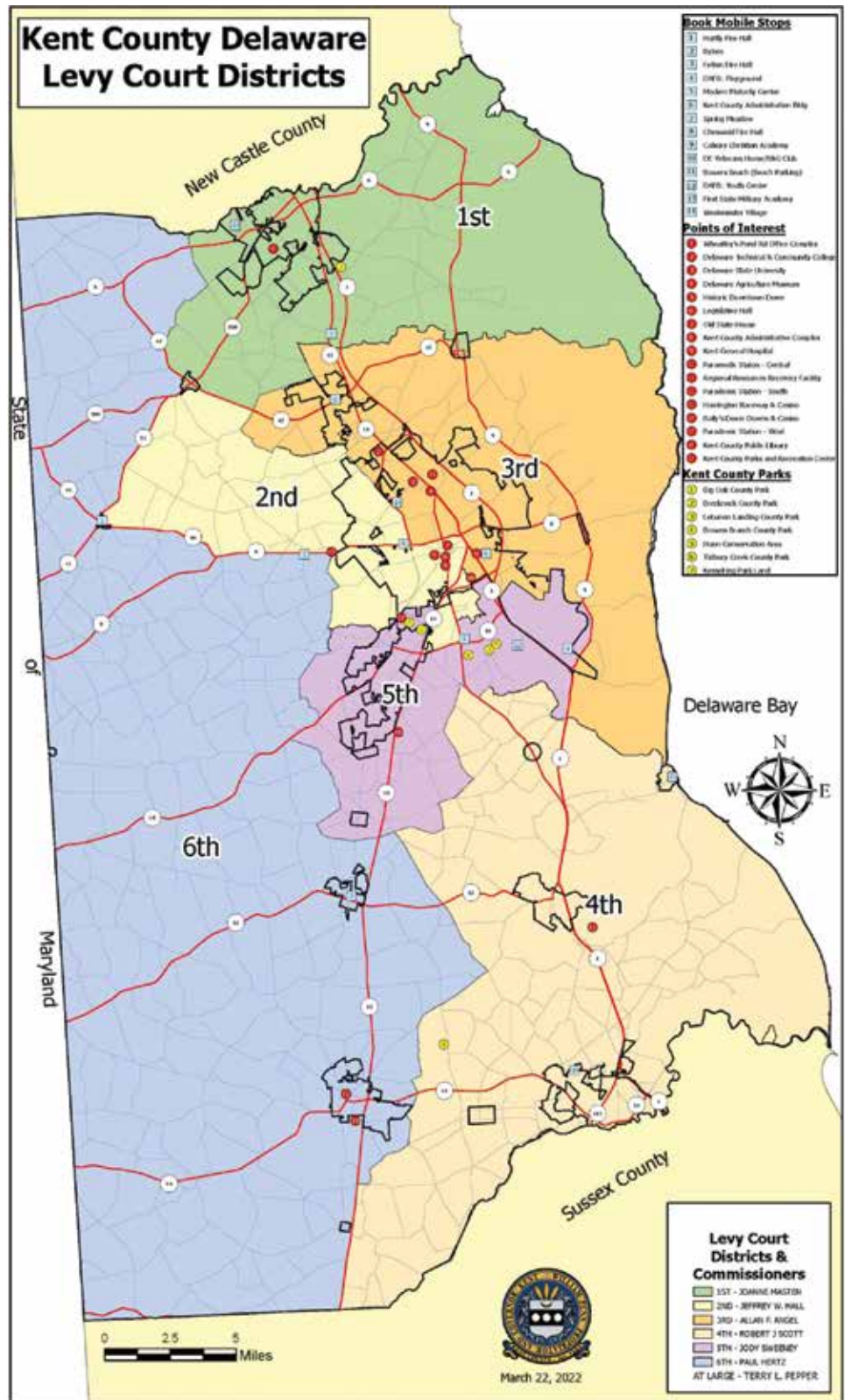
Library Services	302-744-1919
------------------	--------------

**Kent County Parks and Recreation
1683 New Burton Road
Dover, DE 19904**

Main Number	302-744-2495
-------------	--------------

**Kent County Wastewater Treatment Plant
139 Milford Neck Road
Milford, DE 19963**

Wastewater Facilities	302-335-6000
-----------------------	--------------



SPRING INTO ACTION: GET READY FOR A SUCCESSFUL SALE!

Important Updates for Sheriff Sale Bidders!

By Denise Hamm,
Office of the Sheriff



Spring is the perfect season for fresh investments! Whether you're eyeing a fixer-upper to renovate or adding to your portfolio, now is the time to take advantage of key updates that make bidding smoother and more efficient.

As the season of renewal begins, so do important changes to the sheriff sale process!

Stay ahead by learning about our new bidder registration process and updated deposit requirements, ensuring a seamless and successful investment experience.

New Bidder Registration Process

Effective May 1st, all bidders must complete a new registration process before participating in a sheriff sale. This update enhances security, ensures compliance, and streamlines the bidding process. Be sure to register well in advance of any upcoming sales to avoid last-minute hurdles!

How to Register:

1. Visit our official website and fill out the bidder registration form.
2. Submit it in person or via email prior to the sale at Sheriff@kentcountyde.gov
3. Check in with office staff prior to every sale to submit your deposit and receive your bidder number.
4. Unsuccessful bidders can return to our office staff after the sale to receive

their deposit check back.

Updated Deposit Requirements

Along with the registration update, we have revised our deposit requirements. To participate in the auction, bidders must now submit a deposit of \$4000 in the form of certified funds prior to the sale. This ensures that only serious bidders engage in the process, creating a fair and competitive environment. The deposit is a non-refundable deposit if you are the winning bidder.

All unsuccessful bidders will receive their deposits back after the sale from one of the office staff, after returning your bidder number.

For more details, visit KentCountyDE.gov or contact our office at 302-736-2161. We're here to help you navigate these exciting changes. Happy bidding!

STAY SAFE THIS SUMMER: TIPS FROM THE KENT COUNTY DEPARTMENT OF PUBLIC SAFETY

By Brandon Olenik

Summer in Kent County means outdoor fun, vacations, and community events, but it also brings risks like extreme heat, severe storms, and water-related hazards.

The Kent County Department of Public Safety wants to ensure you and your family stay safe while enjoying the season.

Beat the Heat

- ◆ Stay hydrated by drinking plenty of water.
- ◆ Avoid outdoor activities during peak heat hours (10 AM – 4 PM).
- ◆ Never leave children or pets in a parked car.
- ◆ Know the signs of heat-related illnesses like heat exhaustion and heat stroke. Seek medical attention if necessary.

Storm Safety

- ◆ Summer storms can bring heavy rain, lightning, and even tornadoes. Stay informed by signing up for emergency alerts from our website: www.kentcountyde.gov. Scroll to the bottom of the page and under stay connected click subscribe for updates.
- ◆ If thunder roars, go indoors! Avoid open areas, tall trees, and water during a storm.
- Secure outdoor furniture and prepare for potential power outages.

Water Safety

- ◆ Always supervise children near water, whether at the pool, beach, or lake.



- ◆ Wear a life jacket when boating or participating in water sports.

- ◆ Be aware of rip currents at the beach and swim near lifeguards.

Grill & Fire Safety

- ◆ Keep grills at least 10 feet away from structures and never leave them unattended.
- ◆ Dispose of coals properly and keep a fire extinguisher nearby.
- ◆ Follow local burn bans and fireworks regulations to prevent outside fires.

By staying aware and prepared, we can all have a fun and safe summer in Kent County! For more safety tips and updates, visit www.kentcountyde.gov and navigate to the Public Safety page.

STRENGTHENING LOCAL ROOTS: KENT ECONOMIC PARTNERSHIP'S MISSION TO EMPOWER BUSINESSES AND FOSTER GROWTH IN CENTRAL DELAWARE

By Zachary Prebula

Business retention and expansion (BRE) is at the heart of the Kent Economic Partnership's (KEP) mission to foster economic growth in Central Delaware. While attracting new businesses to the region is essential, supporting and strengthening the businesses already here is equally critical. Through proactive engagement, tailored resources, and a collaborative approach, KEP ensures that Kent County's businesses have the tools they need to thrive and grow.

A successful BRE strategy focuses on nurturing relationships with local businesses to address their challenges, seize opportunities, and promote long-term success. Businesses that feel supported are more likely to stay and expand in the area, contributing to job creation and economic stability. Moreover, thriving local businesses attract complementary industries and investments, creating a ripple effect of economic benefits.

Kent County is home to a diverse array of businesses, ranging from manufacturing and logistics to healthcare and agriculture. Each of these industries plays a vital role in the local economy, and KEP recognizes the importance of helping these businesses overcome barriers and achieve their goals.

KEP's BRE efforts are rooted in building strong connections with local businesses. This begins with regular outreach, including site visits, virtual calls, and one-on-one meetings. These interactions allow the KEP team to understand each business's unique needs and challenges. Common areas of focus include workforce development, infrastructure improvements, regulatory navigation, and site selection.

A standout example of KEP's BRE work is its collaboration with workforce partners and local training programs. By aligning the needs of businesses with workforce development initiatives, KEP



ensures that companies have access to a skilled talent pipeline. This alignment not only helps businesses meet their staffing needs but also provides valuable career opportunities for residents.

Another key aspect of KEP's approach is facilitating connections between businesses and resources. Whether it's helping a company secure funding for expansion, advocating for necessary infrastructure upgrades, or providing guidance on navigating state and local regulations, KEP acts as a trusted partner and advocate for Kent County businesses.

KEP's BRE efforts have led to numerous success stories that highlight the impact of this work. One example involves a local manufacturer that was facing challenges due to outdated infrastructure. By working with the company and local government, KEP helped secure funding for critical upgrades, enabling the business to expand its operations and hire additional staff.

In another instance, KEP supported a healthcare provider in identifying opportunities to fund a facility expansion. This expansion not only increased the provider's capacity to serve the com-

munity but also created new jobs in the process.

These stories underscore the importance of a proactive and collaborative approach to BRE. By addressing the unique needs of each business, KEP helps create an environment where businesses can flourish and contribute to the region's economic vitality.

KEP remains committed to prioritizing BRE as a cornerstone of its economic development strategy. The organization recognizes that the success of local businesses is intertwined with the success of the broader community. As Kent County continues to grow, KEP will expand its efforts to support businesses, foster innovation, and drive sustainable economic development.

Businesses interested in learning more about KEP's BRE initiatives or seeking assistance are encouraged to reach out.

Whether it's navigating challenges or planning for future growth, KEP is here to help businesses succeed. Together, we can ensure that Kent County remains a vibrant and thriving hub for economic opportunity. Visit us at www.choosecentraldelaware.com.

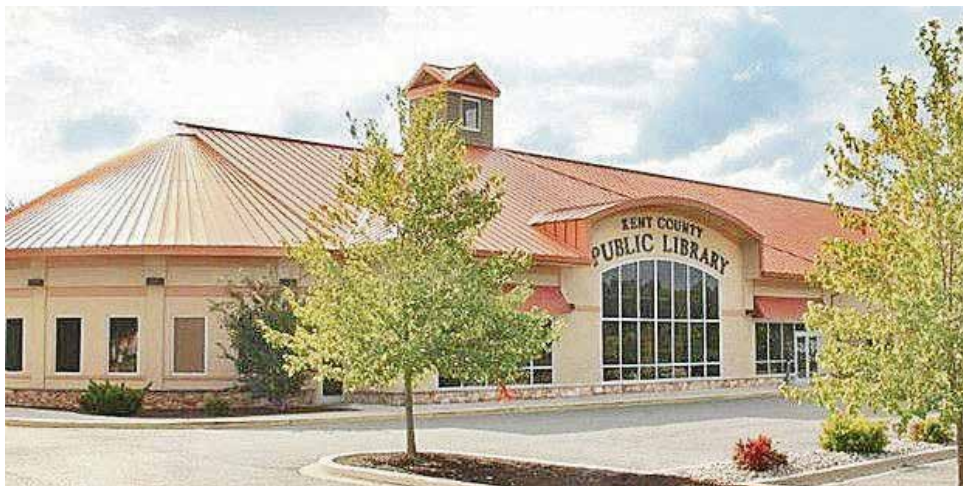
KENT COUNTY PUBLIC LIBRARY CELEBRATES 15 YEARS AT THE CENTRE AT LONGACRE

By Hilary Welliver

On June 23, Kent County Public Library will mark 15 years at its home in the Centre at Longacre—a proud milestone in its ongoing commitment to being a vibrant community hub. Since opening its doors on June 23, 2010, the library has remained steadfast in its mission to empower individuals, foster opportunities, and enrich lives.

“The Friendly Library on the Highway” has come a long way since its humble beginnings in 1989, operating a trailer-drawn bookmobile with just 2,000 books. Now recognized as the Delaware Library Association’s 2024 Library of the Year, the library continues to uphold its core values of service, innovation, and community engagement. With the support of its incredible 10,282 card-carrying members, it proudly carries its legacy forward.

Over the past 36 years, the Kent County Division of Libraries has served the Greater Kent County community through mo-



bile outreach and, later, a permanent facility at 497 South Red Haven Lane. As a cornerstone of the community, the library has built a reputation for trusted programs, diverse collections, and impactful services.

Join us on Monday, June 23, to celebrate this remarkable journey with special activities. Thank you for your continued support as we look to the future of serving Kent County!

KENT COUNTY PUBLIC LIBRARY SPROUTS NEW INITIATIVE WITH LAUNCH OF SEED LIBRARY

Kent County Levy Court’s Department of Community Services is thrilled to announce the launch of a new service at the Kent County Public Library: a Seed Library. The service began on Friday, March 14th. “As a garden hobbyist myself, I’ve seen Seed Libraries sprouting up nationwide—there are over 600 in the U.S., including several in Delaware libraries,” noted Dr. Welliver.

Community response was overwhelming, according to Kent County Librarian, Dr. Hilary Welliver. “There was a line outside waiting for the library to open.”

The Seed Library is housed in a vintage drawer cabinet in the main area of the Kent County Public Library. Patrons can access free seeds organized into categories: flowers, vegetables, herbs, and “other.” Each packet contains 12-15 seeds—just enough for a row in a home garden or raised bed. Each packet is labeled with the plant’s name, source, date, and basic planting information.

How It Works:

Like a regular library, gardeners can “borrow” seeds at planting time. This initiative allows community members to take seeds to start their home or raised gardens. The Seed Library’s initial collection comes from donations of commercially packaged seeds.

“Many of us don’t need a whole packet of seeds for our gardens. Repackaging donated packets helps reduce waste,” added Dr. Welliver.

“We encourage gardeners to use our collection of commercial seed catalogs, gardening-themed programs, and gardening books.”

Library patrons are encouraged to keep records of their growing season and share their results with library staff. “We’d love to know how your garden grows!” said Dr. Welliver.

Benefits of the Seed Library

The Seed Library demonstrates Kent County Public Library’s dedication to providing the community with free access to seeds, enabling everyone to enjoy the benefits of growing safe, nutritious, and delicious food, fragrant herbs, and beautiful flowers.

It’s an opportunity for people to share gardening techniques and traditions, explore new skills, and grow food without financial burdens. The Seed Library fosters an understanding of food safety, sustainable practices, and environmental stewardship. It empowers individuals to grow safe, affordable, nutritious, and meaningful food for themselves and their families.

KENT COUNTY BREAKS GROUND ON NEW EMERGENCY MEDICAL SERVICES STATIONS IN FREDERICA & HARRINGTON

On March 18th Kent County Levy Court and the Kent County Department of Public Safety in partnership with Bancroft Construction, broke ground for two new Emergency Medical Services (EMS) stations in the City of Harrington and the Town of Frederica. These much-needed stations will enhance emergency response capabilities and ensure first responders the resources needed to serve the growing communities effectively.

There were two groundbreaking ceremonies that took place:

◆ Harrington Ceremony: at 501 Gordon St., Harrington, DE 19952

◆ Frederica Ceremony: at 137 Milford Neck Rd., Milford, DE 19963

Kent County Commissioners, County and EMS Leadership, members of Delaware's Congressional Delegation, and Kent County members of the General Assembly participated.

About the Project:

Kent County, in partnership with Bancroft Construction, is leading the essential initiative to enhance the EMS infrastruc-

ture(s). Funded through Kent's American Rescue Plan (ARPA) allocation, the new stations will provide modern facilities for emergency responders.

◆ Harrington Station: The new 3,700-square-foot crew station will feature bunk rooms, meal areas, office spaces, rest spaces, and a pull-through garage for medic vehicles.

◆ Frederica Station: Will be identical to the Harrington Station with the addition of a warehouse to house the Kent County EMS command vehicle and provide extra storage for equipment and vehicles.

"We are beyond proud to be able to invest in the safety and well-being of Kent County residents. These new EMS stations will ensure our first responders have the tools they need to continue providing life-saving services," said Joanne Masten, Kent County Levy Court President.

County officials are looking forward to these new stations which will serve to improve emergency response times across the county, enhance working conditions for EMS personnel, increase storage capacity for equipment and vehicles, and strengthen community safety and preparedness for future emergencies.



L-R John Tinger, Greg Sawka, Shannon Morris, Mayor Duane Bivens, DJ Cox, Congresswoman Sarah McBride, Dave Wilson, Terry Pepper, Amanda Marlow, Norman Barlow, Kevin Sipple, Jody Sweeney, Robert Scott, Joanne Masten



Aerial view of Frederica site just prior to the ceremonial groundbreaking

Summer Holiday Closures and Trash Collection Services

Memorial Day	Monday, May 26	Trash Services, One Day Later, For All Customers
Juneteenth	Thursday, June 19	
Independence Day	Friday, July 4	Trash Services, One Day Later, Friday Customers
Labor Day	Monday, September 1	Trash Services, One Day Later, For All Customers

SPOTLIGHT ON EXTRAORDINARY TALENTS IN KENT COUNTY LEVY COURT

Delaware GIS Analyst Kyle Satterfield Authors Best-Selling GISP Study Guide, Inspiring Professionals Worldwide



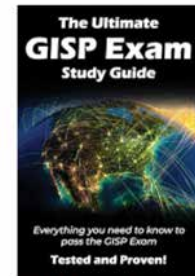
Meet Kyle Satterfield, a Geographic Information Systems (GIS) analyst in the Department of Planning Services. By March 2025, Kyle achieved remarkable success as the author of *The Ultimate GISP Exam Study Guide*, the best-selling book worldwide in the Geographic Information Systems category.

During his journey to earn the prestigious Geographic Information Systems Professional (GISP) certification, Kyle en-

countered frustration with the lack of quality study materials. Determined to help others, he channeled his expertise and experience into creating a comprehensive, high-quality guide after passing the exam himself. His dedication paid off, as his book became an essential resource for aspiring GIS professionals.

Notably, Kyle is the 15th individual in Delaware to earn the distinguished GISP certification—a testament to his skill and commitment to excellence.

#1



The Ultimate GISP Study Guide: All you need...

> Kyle Satterfield

★★★★★ 7

Paperback

\$36.22

PAUL MODESTO, JR.: TRANSFORMING DRIFTWOOD INTO STUNNING WORKS OF ABSTRACT ART

Paul Modesto Jr., a talented member of the Department of Planning Services, discovered his unique hobby during his trips to Woodland Beach years ago. While walking his dogs, he stumbled upon a fascinating piece of driftwood that resembled a gazelle's head. After conducting some research, he created a meticulously scaled sculpture based on the driftwood—marking the beginning of his journey into driftwood art.

Paul possesses an exceptional talent for examining pieces of driftwood and envisioning their potential. For instance, in the horse's head sculpture, the eye piece took him considerable time to find. He doesn't manipulate the wood by cutting or altering it but instead embraces its natural flaws to craft his creations. Each sculpture takes him between 4 to 10 hours to complete, depending on its complexity.



While Paul has sold some of his works, he also maintains a collection of driftwood of various shapes, sizes, and colors, each awaiting its transformation into a unique sculpture. He shares, "I'd like to participate in craft shows someday, but for now, it's just a fun hobby. I usually spot a piece and build on my imagination. I've done some custom pieces where people share their ideas and dimensions, and we agree on a price. I enjoy creating abstract art rather than exact replicas—it gives me more creative freedom."

It's impressive how he lets the wood guide his creations, as seen in the horse's head where he carefully found and incorporated the eye piece naturally. His choice to focus on abstract designs instead of precise replicas also adds an exciting layer to his art—it allows him to explore boundless creativity.

UPDATE ON KENT COUNTY 911 DISPATCH CENTER'S REMODEL

The remodeled dispatch center now boasts modern ergonomic consoles, providing dispatchers with customizable workstations designed for long hours of use. The durable new flooring adds a sleek, professional appearance while ensuring lasting performance under heavy foot traffic. Enhanced acoustic wall installations significantly reduce ambient noise, creating a quieter and more focused environment for dispatchers handling critical calls. Moreover, the updated electrical and data infrastructure positions the center for seamless functionality and future growth.

One of the standout achievements of the project is the expansion

from 18 to 22 dispatch positions, boosting the center's capacity and flexibility during high-demand periods. The images vividly capture the advanced, organized layout that underscores the center's readiness to respond to emergencies with heightened efficiency.

This phased remodel ensured uninterrupted 911 services throughout the process, a testament to the careful planning and execution behind the project. With construction now complete, Kent County is better equipped than ever to serve its community, meeting the needs of today and preparing for challenges ahead.



Employees of the Month

JAMES THISTLEWOOD, III

JANUARY



James Thistlewood, III
Administration
Department

Kent County Department Heads have selected James Thistlewood, III from the Administration Department as the January 2025 Employee of the Month.

James is a Custodian in the Facilities Management Section of the Administration department and started with Kent County in July 2023. He began his career with the County after retiring from Delaware Technical and Community College after 27 years of dedicated service as a member of the custodial staff.

James is stationed at the Administrative Complex. His responsibilities, from recycling collection and ensuring clean workspaces to

handling specialized terrazzo floor maintenance, show a strong commitment to facility upkeep. Balancing these tasks with weekend duties at the Recreation Center highlights his flexibility and dedication.

According to Facilities Director, Shawn Lovenguth "James is an exemplary employee whose work ethic, attention to detail, and team spirit make a significant impact behind the scenes. His dedication to ensuring the facility is clean, organized, and well-supplied, combined with his willingness to step in and support his colleagues, demonstrates true professionalism and teamwork. His quiet, steady efforts exemplify the kind of commitment that keeps operations running smoothly and fosters a positive work environment."

Congratulations James on a job well done!

ROBERT DADDIO

FEBRUARY



Robert Daddio
Kent County
Sheriff's Office

Kent County Department Heads have selected Robert Daddio from the Kent County Sheriff's Office as the February 2025 Employee of the Month.

Bob is the Chief Deputy Sheriff in the Sheriff's Office and started in February 2023. He began his career with the County after serving 29 years with the Delaware State Police; 20 of those years in the position of CSI detective.

As the Chief Deputy, his responsibilities include overseeing the day-to-day operations of the Sheriff's Office, managing staff, budgets, and resources; training deputies in office, court procedures, and service techniques; enforcing Superior and Chancery Court orders and judgements, and serves civil and criminal processes.

Bob recently demonstrated great courage and composure in a very tense, dangerous, and potentially life-threatening situation occurring on September 13, 2024, while attempting to perform service at a location in Harrington. With additional assistance from Officers Sapp and Stubb, Bob was able to employ his many years of law enforcement experience and critical thinking in negotiating with a suicidal subject and ultimately helping to de-escalate the situation ensuring everyone's safety.

According to Sheriff Norman Barlow "Bob's bravery played a pivotal role in bringing a peaceful resolution to a dangerous situation. His actions exemplify the professionalism, courage, and teamwork that make him an invaluable member of the department. His commitment to duty and safety—not only to his fellow officers but also to the community he serves—embodies the core values of our department and the County."

Congratulations Bob, on a job well done!

GREGORY SCHULTIES

MARCH



Gregory Schulties
Department of
Public Safety
– Emergency
Medical Service
(EMS)

Kent County Department Heads have selected Gregory Schulties from the Department of Public Safety – Emergency Medical Service (EMS) division as the March 2025 Employee of the Month.

Greg is a Paramedic III (with the title of Staff Sergeant) in the EMS division. He began his career with the County as a Paramedic I in June 2016. In June 2018 Greg was promoted to a Paramedic II and began serving as a Field Training Officer shortly after in March 2019. His hard work, dedication, and tenaciousness led him to the position of Paramedic III in March 2021.

Beyond Greg's Paramedic III duties, he plays a vital role in the EMS Division. He is instrumental in ensuring the operational readiness of our equipment, vehicles, and facilities while

also supporting quality assurance and training programs. His attention to detail in managing data, scheduling, and logistics helps keep our division running smoothly. Greg is also a key liaison with

other agencies and provides invaluable support during special events.

Greg has demonstrated exceptional leadership and dedication by seamlessly assuming responsibility for coordinating the student candidate process during the Administrative Captain's leave. His proactive approach ensured that this critical function remained uninterrupted and even improved under his guidance. Greg has implemented key enhancements that have streamlined operations, providing student candidates with the support and structure necessary for success as they enter their career as licensed paramedic.

According to the Acting Director of Public Safety, Acting Chief John Tinger "Greg's ability to step into this role and elevate its standards reflects both his innovative mindset and his steadfast commitment to the public safety mission. These contributions, combined with his unwavering dedication to excellence, make Sergeant Schulties a standout choice for Employee of the Month. His dedication, leadership, and willingness to go above and beyond make a significant impact on our team and the community we serve."

Congratulations Greg, on a job well done!

KENT COUNTY LEVY COURT, COMMUNITY SERVICES DEPARTMENT

Upcoming Programs and Activities for Recreation, Parks, and Libraries



Summer 2025

KENT COUNTY PARKS AND RECREATION & KENT COUNTY RECREATION CENTER

1683 New Burton Rd.
Dover, DE 19904

Office Hours:
Monday – Friday,
8:00 a.m. – 5:00 p.m.
Phone: 302-744-2495

Email:
ParksRec@KentCountyDE.gov

www.KentCountyDE.gov

Parks and Recreation Commission

Kevin Zimmerman, Chairman	4th District
John Stant III, Vice Chairman	2nd District
Walter Carroll	6th District
Ed Coker	1st District
James E. Long	5th District
Brian J. Michalski	At Large
Walter Waite, Jr.	3rd District

Mission Statement:

Our mission is to plan, promote and develop recreational facilities and activities consistent with the needs of all Kent County residents for now and the future.

Commission Goals:

1. To promote the health, welfare and safety of all recreational participants
2. To monitor recreational facilities and programs
3. To study and identify needed recreational facilities and services
4. To support the Park and Recreation Division in serving all Kent Countians
5. To fulfill responsibilities delegated by Kent County Levy Court under Article III of the Parks and Recreation Commission Bylaws
6. To protect and conserve natural resources
7. To promote an awareness of public recreational facilities in Kent County
8. To incorporate technological resources into the County recreational planning and delivery system
9. To promote and develop Greenways as recreational resources
10. To function as a recreational advocate on behalf of the population of Kent County
11. To work in conjunction with other agencies to enhance recreational resources
12. To expand recreational and leisure activities
13. To insure compliance with provisions for open space, preservation and management
14. To identify and recommend funding sources that support parks and recreation opportunities

Accepted by Kent County Levy Court 8/22/2000

REGISTRATION PROCEDURES

• Registration will be accepted through mail & in-person at 1683 New Burton Rd., Dover, 19904 or on-line on a first come, first served basis. **NO PHONE IN REGISTRATION WILL BE ACCEPTED.** Cost of activity must be paid in full when registering except when stated differently. Please follow registration procedures listed below.

ONLINE REGISTRATION

Online Registration catalog can be accessed via secure.rec1.com/DE/kent-county-de/catalog. MasterCard, Visa and Discover Card **payments are processed through Authorize.net (which will read Kent County Levy Court on statement);** however, refunds must be processed through Kent County Parks and Recreation; allow up to 2 weeks for processing. All other refund policies apply.

CREDIT CARD USE POLICY

Kent County Parks and Recreation cares about the safety of your credit card information. We will no longer accept mailed or phoned in credit card payments. Credit card payments (Visa, MasterCard, Discover) can be made via our online registration catalog (CivicRec). Kent County Parks and Recreation can only accept credit card payment by authorized account holder as displayed on the card.

PROGRAM ACCOMMODATIONS

The Kent County Parks and Recreation invites individuals to enjoy our programs, parks, and facilities. It is the policy of the Kent County Levy Court that all programs be accessible to all individuals as provided in Section 504 of the Rehabilitation Act of 1973. If you or the person(s) you are registering need modification for your program of interest, please contact Mike Rigby at 302-744-2495 or email at michael.rigby@KentCountyDE.gov before registering to discuss this matter.

TEXT MESSAGE NOTIFICATION

Through our registration software vendor, CivicRec, we have the capabilities of sending text message notifications directly to your mobile phone. The text message notification system would only be used for the program you are currently participating in and relate only to important messages such as cancellations, changes to schedule, or other necessary updates. In order to receive the text message notifications, you must submit your mobile carrier name when signing up for an account. If you have any questions regarding this helpful program, please call our office.

REFUND POLICY

Registration fees for recreation programs/activities must be paid in advance and shall be refunded in full to the payer of record if the County cancels the program/activity. If a participant cancels his/her participation in a program at least **five (5) days** prior to the first scheduled day, a full refund shall be paid less a **\$5** processing fee pursuant to County ordinance. Refunds will not be given for any other reason.

GENERAL INFORMATION

- Classes and activities are subject to cancellation for any reasonable cause.
- For weather and last minute cancellation information, please view our website at kentcountyde.gov/home and facebook.com/KentCountyParksandRec. Timely program cancellation notifications will be done by email or text notification from Staff.
- Please make sure that the instructor is present before dropping your child off at a program
- Arrive to pick up your child at least five minutes before the program's scheduled closing. Failure to pick up your child on time may result in expulsion from the program.
- A child may be expelled from a program with no refund after notifying parent of disciplinary problems.
- The Department may photograph programs and participants for publicity purposes, such as the brochure, facebook, twitter, etc.
- The Department has the right to adjust any of the program details in the brochure including fees, locations, instructors, times, days and starting dates.

WAIVER AND RELEASE OF LIABILITY AND INDEMNITY AGREEMENT

I hereby acknowledge that in using the facilities, programs and equipment of Kent County Parks and Recreation, I do so entirely at my own risk and I assume the risk of any injury and/or damage while engaging in any physical exercise or activity or use of any facility on the premises. This assumption of the risk includes, without limitation, my use of the gymnasium, athletic courts, lobby, hallways, athletic fields, parks, sidewalk, parking lot, seating, or any equipment in the facility/park. I further agree to assume the risk in participating in any activity, class, program, instruction, or any event sponsored by Kent County Parks and Recreation (Kent County Levy Court).

By executing this Agreement, I HEREBY WAIVE, RELEASE AND FOREVER DISCHARGE, Kent County Levy Court and its past, present and future administrators, partners, employees, insureds, assigns, agents, and representatives in their personal and professional capacities (collectively "Kent County Parks and Recreation"), from all claims, demands, injuries, damages, actions or causes of action, and from all acts of active or passive negligence on the part of such entity, its servants, agents, or employees of any nature whatsoever, including attorneys' fees and costs arising out of or connection with the aforementioned activities. I further agree to indemnify and hold harmless Kent County Levy Court from any claims, demands, injuries, damages, actions or causes of action, loss, liability, damage or cost which Kent County Levy Court may incur due to my presence at or use of the facility. I further agree that the foregoing warranty, waiver and indemnity agreement is intended to be as broad and inclusive as permitted by the law of the State of Delaware and that if any portion is deemed to be invalid, it is expressly agreed that the remaining terms shall remain in full legal force and effect.

KENT COUNTY PARKS AND RECREATION - ACTIVITY REGISTRATION FORM

PLEASE PRINT AND FILL OUT COMPLETELY

Important: Registration waiver must be signed by participant. If participant is under 18, parent or guardian must sign.
Mail To : Kent County Parks and Recreation, 1683 New Burton Rd, Dover, DE 19904

RECEIPTS REQUESTED BY: EMAIL, OFFICE PICK UP, OR INCLUDE A SELF ADDRESSED STAMPED ENVELOPE WITH YOUR REGISTRATION.

Payee Name (First, Last)																								
Street Address																								
City							State			Zip														
E-mail																								
Home Phone																								

Registration procedures, see previous page.

Request Receipt YES NO

ACTIVITY CODE	ACTIVITY NAME	FIRST	PARTICIPANT'S NAME LAST	SEX	T-SHIRT SIZE	BIRTH DATE	FEE

SPECIAL REQUESTS (Siblings, Coaches, Teammates etc.):

SUB TOTAL \$

FORM OF PAYMENT

- CHECK #
- CREDIT ON ACCT
- MONEY ORDER

CREDIT CARD POLICY

DO NOT SEND CREDIT CARD INFO ON FORM. SEE REGISTRATION PROCEDURES ON PREVIOUS PAGE IN THIS BROCHURE FOR USE OF CREDIT CARDS.

WAIVER AND RELEASE OF LIABILITY AND INDEMNITY AGREEMENT

I ACKNOWLEDGE THAT I HAVE CAREFULLY READ THE FULL AGREEMENT ON PAGE 12 OF THIS BROCHURE AND/OR THE COUNTY WEBSITE, AND FULLY UNDERSTAND THAT IT IS A RELEASE OF LIABILITY AND EXPRESS ASSUMPTION OF RISK AND INDEMNIFICATION. I AM AWARE AND AGREE THAT BY EXECUTING THIS WAIVER AND RELEASE, I AM GIVING UP THE RIGHT TO BRING LEGAL ACTION OR ASSERT A CLAIM AGAINST KENT COUNTY LEVY COURT FOR ITS NEGLIGENCE AND/OR FOR ANY DEFECTIVE PRODUCT THAT MAY BE IN THE FACILITY OR ON ITS PREMISES. BY SIGNING BELOW, I CERTIFY THAT I HAVE READ AND VOLUNTARILY SIGNED THIS AGREEMENT AND THAT NO ORAL REPRESENTATIONS, STATEMENTS OR INDUCEMENTS APART FROM THIS FOREGOING AGREEMENT HAVE BEEN MADE. PARENT OR LEGAL GUARDIAN MUST SIGN FOR ANY CHILD UNDER 18 YEARS OLD ENTERING A PROGRAM.

Signed:

Date:

ARTS & CRAFTS

ACRYLIC PAINTING FOR ADULTS

Ages: 16+ Fees: \$80
Days: Thu Time: 6:00-8:00pm
Sess: July 10-31 AC# APFA710

The Dover Art League, 21 W. Loockerman St., Dover. Although color and light may appear daunting, understanding color theory can demystify the process. In this class, students will get the opportunity to learn how color theory works in a practical way that will serve them immensely as they create three beautiful landscapes and one still life with step-by-step instruction. Along the way, students will get to practice clouds, trees, gradations, and shadows. They will also get to learn how to make a sun glow, how to create the illusion of sunlight, and how to sculpt an object using two contrasting light sources. All materials will be provided. Instructor: Helen Hogan. Min 5, Max 10.

BEGINNER AND ADVANCED HAND CROCHET OR KNITTING DESIGN

Ages: 13 & up Fees: \$65
Days: Tue Hours: 5:30-7:30pm
Sess: July 15-29 AC# CROKNI715
Sess: Aug 5-19 AC# CROKNI805

Kent County Administrative Complex, Room 126A, 555 Bay Rd, Dover. The beginner class will learn how to make a scarf and potholders, participants will keep all projects made. The advanced class will learn how to make their own projects. **(Please indicate on registration form whether you are a crocheter or knitter, beginner or advanced.) Parents must stay if the child is under 18.** Instructor: Manh Nguyen, with over 40 years of teaching experience. **For a list of class supplies, (supplies not included) please call Manh at 302-530-9525.** Min 3, Max 15.

CREATE & CELEBRATE: DIGITAL DESIGN FOR INVITATIONS & FLYERS

Ages: 16+ Fees: \$35
Days: Sat Time: 10:00am-1:00pm
Sess: July 26 AC# CAC726

The Dover Art League, 21 W. Loockerman St., Dover. In this hands-on workshop, participants will learn how to design stunning digital invitations and flyers using Canva, focusing on essential design principles such as layout, color theory, and typography. Through guided lessons, attendees will explore Canva's easy-to-use tools to create professional-quality designs that are ready to print or share online. By the end of the workshop, participants will complete personalized, event-specific invitations and flyers, perfect for any occasion, whether personal or professional. This workshop is ideal for anyone looking to elevate their design skills for parties, weddings, business promotions, and more. ***Students must provide their own laptop or tablet.** Instructor: Jaisri Davis. Min 5, Max 10.

DRAWING WHAT YOU SEE

Ages: 16+ Fees: \$75
Days: Tue Time: 6:00-8:00pm
Sess: July 8-29 AC# DWYS708

The Dover Art League, 21 W. Loockerman St., Dover. Are you frustrated with drawing because it never seems to look like what you see in front of you? Learning to observe before you draw is key! This class will train your eyes to see objects the way an artist needs to see them. We will progress through a series of exercises using grids, viewfinders, and pencil measuring to practice rendering objects accurately. These objects will include a profile, an eye, a still life, a hand, and a chair, which we will draw in pencil. In addition, we will learn about and practice light and shadow using still-life objects. By the end of class, you should have the tools you need to practice drawing what you see accurately. **All materials will be provided.** Instructor: Helen Hogan. Min 5, Max 10.

KNOTS & NATURE: MACRAME A PLANT HANGER!

Ages: 16+ Fees: \$40
Days: Sat Time: 10:00am-1:00pm
Sess: June 14 AC# KAN614

The Dover Art League, 21 W. Loockerman St., Dover. Are you obsessed with plants? So obsessed that you're running out of space in your house and need to start creative problem solving where to put more plants? This workshop will solve all your plant-based problems! Students will learn how to create macrame plant hangers utilizing basic knotting techniques to create their designs. The instructor will guide participants through each step while also assisting with any individual design ideas. Students will leave this class with a new skill in their repertoire and a beautiful display for their plants at home. ***Pots available** or participants are welcome to bring a pot of their own and create their plant hanger to fit. **Pots without drainage holes or saucers are recommended. Plants not included. All other materials included.** Instructor: Charlese Phillips. Min 5, Max 10.

LOG CABIN FOR BEGINNERS

Ages: 16 & up Fee: \$80
Days: Tues Time: 5:00-8:00pm
Sess: July 1 - Aug 5 AC# LCQUILT701
(no 7/29)

Delaware Sewing Center, 1716 S. Governors Ave., Rodney Village Shopping Center, Dover. This class is designed for someone that wants to start quilting or just need to brush up on quilting skills. Learn to rotary cut strips of fabric accurately. Then sew the strips into a log cabin quilt square. Add borders, machine quilt and sew on the binding. WOO-HOO you have a Log Cabin Quilt. **A sewing machine in good working order is needed. Must purchase the Log cabin book. For more information and a list of supplies, call instructor Crystal Sweeney at 302-674-9030.** Min 4, Max 6.

MADE WITH LOVE: CLAY WORKSHOP FOR KIDS!

Ages: 8-12 Fees: \$65
Days: Fri Time: 5:30-7:30pm
Sess: July 25 & Aug 1 AC# MWL725

The Dover Art League, 21 W. Loockerman St., Dover. Parents, enjoy a well-deserved night out while your children explore their creativity! In this two-part clay workshop, kids will learn the coil method to craft a beautiful and functional piece of pottery. During the first session, they'll shape and design their piece while learning basic hand building pottery skills. In the second session, students will paint and decorate their creations. Dinner (pizza and a drink) is included to make the evening even more fun. Enjoy your date night while we create! ***All materials will be provided.** Instructor: Rebecca Walsen. Min 5, Max 12.

PHOTOGRAPHY FOR BEGINNERS

Ages: 16+ Fees: \$100
Days: Sun Time: 10:00am-12:00pm
Sess: July 13-Aug 17 AC# PFB713

The Dover Art League, 21 W. Loockerman St., Dover. Do you have a camera, but still use the auto settings? Do you want maximum control over your images to achieve exactly what you envision? Then this class is for you! In this course students will learn the basics of photography including exposure, aperture, shutter speed, basic editing, and more! Students will have the opportunity during class hours to get outside and practice the techniques they learn. All you need is a DSLR camera and a notebook! The editing portion will be taught via a projector, but students can bring their own laptop if they'd like. Instructor: Jarred Knorr. Min 5, Max 15.

SEWING MADE EASY AND FUN

Ages: 13 & up Fee: \$65
Days: Mon Time: 5:30-7:30pm
Sess: July 14-28 AC# SEW714
Sess: Aug 4-18 AC# SEW804

Kent County Administrative Complex, Room 126A, 555 Bay Rd, Dover. Participants will learn sewing machine basics: operation, connect fabric, sew on a button and make a button-hole (if your machine has one). The class will also cover how to hem a skirt, pants, shorts, dress, tunnel elastic, make a tie belt and repair a garment (supplies not included). Participants will need to bring their machine and instruction manual. **Parent must stay if child is under 18.** Instructor: Manh Nguyen, with over 40 years of teaching experience. **For a list of class supplies, (supplies not included) please call Manh at 302-530-9525.** Min 3, Max 12.

ARTS & CRAFTS

SIGNED, FIRED, DELIVERED: PERSONALIZED CLAY CREATIONS

Ages: 13+ Fees: \$80
Days: Tue Time: 5:30-7:30pm
Sess: June 17-July 8 AC# SFD617

The Dover Art League, 21 W. Lookerman St., Dover. In this hands-on pottery course, participants will explore the art of ceramics by designing and crafting their own monogrammed tile and a set of mini magnets. Using hand-building techniques, students will shape, carve, and texture their clay pieces, learning how to personalize their designs with patterns and surface details. Throughout the four-week course, they will gain hands-on experience in clay handling, refining, and glazing, while also understanding the firing process. This class offers a fun and engaging way to create functional and decorative ceramic pieces, perfect for beginners looking to explore the world of clay. **All materials will be provided.** Instructor: Jaisri Davis. Min 5, Max 8.



T-SHIRT QUILTING

Ages: 16 & up Fee: \$80
Days: Sat Time: 3:00-6:00pm
Sess: Aug 16 - Sep 20 AC# TQUILT816
(no 9/13)

Delaware Sewing Center, 1716 S. Governors Ave., Rodney Village Shopping Center, Dover. If you are like most people, you have a pile of treasured old T-shirts you just can't bear to throw away. This class is geared to turning your old clothes into lasting memories. Just think of a graduation gift, a lasting memory of a great vacation, or all those years of sports. **Stop by the shop to pick up supply list, call Delaware Sewing Center at 302-674-9030.** Min 4, Max 7.

CAMPS

BASKETBALL CAMP

Ages: 6-16 Fee: \$150
Days: Mon-Fri Time: 9:00am-3:00pm
Sess: June 23-27 AC# BBCAMP623
Sess: Aug 11-15 AC# BBCAMP811

Kent County Recreation Center, 1683 New Burton Rd., Dover. Camp participants will learn the fundamentals of basketball through stations, competitions, and games. Stations will include fundamentals such as passing, shooting, rebounding, defense, and offensive moves. There will be daily competitions for Knockout, Hotshot, Dribble Knockout, and Free Throws. During the day, campers will play 3 on 3 and 5 on 5 games. The instruction will be conducted by high school basketball coaches, current and former high school, and college basketball players. **Bring a bag lunch each day. Includes T-shirt (please indicate size on registration form).** Instructors: Tameka Williams

BOYS YOUTH LACROSSE CAMP

Ages: 9-14 Fee: \$87
Day: TBD Time: TBD
Sess: TBD AC# TBD

Kent County Recreation Center, Turf Field 1683 New Burton Road, Dover.

Coaching Staff:

Anthony Edwards: Region 2019 College Coach of the Year / National Junior College Coaches Association President / 10 year college coach / Team captain for Wesley College and Catonsville Junior College.

John Coveleski: Delaware Lacrosse Hall of Fame/ 26 years of coaching college and high school lacrosse / started the lacrosse programs at Caesar Rodney High school & Delaware Tech. For more information, call Joseph Paugh at 302-744-2486.

FIELD HOCKEY CAMP

Ages: 6-14 Fee: \$85
Days: Mon-Fri Time: 8:30-10:00am
Sess: July 7-11 AC# FHCAMP707

Kent County Recreation Center Turf Field, 1683 New Burton Rd., Dover. Basic stick handling, dribbling and hitting skills will be taught. Campers will also learn field layout and player positioning. Camp will incorporate games and relays. Campers need to bring their own equipment, mouth guard and shin guards, water bottle and wear comfortable clothing. Instructor: Michelle Tucker, Head Coach Lake Forest High School. Min 10, Max 25.

INTRO TO HORSES AND FOUNDATIONS OF RIDING CAMP

Ages: 8-12 Fees: \$150
Days: Tue-Thur Time: 9:00am-12:00pm
Sess: June 17-June 19 AC# IHFRC617
Sess: July 15-July 17 AC# IHFRC715
Sess: Aug 12-Aug 14 AC# IHFRC812

Dovington Equestrian Center, 595 Blackswamp Rd., Felton. Campers will learn the basics of working with horses and horsemanship. Campers will ride all 3 days. This camp will focus on barn safety, horse anatomy, tack and equipment terms, how to properly groom a horse, how to saddle and bridle a horse, how to walk, stop and back while riding. If campers' skill level allows, campers will be allowed to jog. Bring a water bottle, **MUST wear closed-toed shoes and long pants.** Instructor: DSU's Equestrian Team Head Coach Jennifer Ridgely. Min 5, Max 10.



SUMMER ART CAMP

Ages: 4-7 Fees: \$175
Days: Wed-Sat Time: 9:00am-3:00pm
Sess: June 18-21 AC# SAC618
Sess: June 25-28 AC# SAC625
Sess: July 9-12 AC# SAC709

The Dover Art League, 21 W. Lookerman St., Dover. Join us for a transformative summer camp where creativity and self-growth go hand in hand! Through hands-on art projects using ordinary craft supplies, students will explore the power of creativity to boost self-esteem, build resilience, and express emotions in a healthy way. They'll create a variety of art projects and experiment with many mediums while embracing mistakes as part of the creative process. The camp experience also includes a tour of the Biggs Museum and a field trip to The Green for an open sketch session. Art will become a tool for self-reflection, coping skills, and transformation. The camp concludes with a celebration of each student's hard work, fostering a sense of community and pride in their artistic journey - aka a party with family and friends! **All materials will be provided.** Instructor: Katie Jaywork and Rebecca Walsen. Min 5, Max 15.

YOUTH PICKLEBALL CAMP

Ages: 8-16 Fee: \$25
Days: Mon & Wed Time: 9:00-10:30am
Sess: June 16 & 18 AC# YPICKCAMP616

Kent County Recreation Center, 1683 New Burton Rd., Dover. This camp is designed to introduce kids ages 8 - 16 to the sport of pickleball or improve the skills of those that already play. The camp will feature introductory skills, age-appropriate drills as well as learning the rules and scoring of the game. Participants should wear comfortable sneakers. **Equipment will be provided but feel free to bring your own paddle if you have one.** Instructors: Lynn Price. Min 10, Max 24.

CAMPS

YOUTH SUMMER SOCCER CAMP

Ages: 8-14 Fee: \$175
Days: Mon – Fri Time: 9:00am–3:00pm
Sess: June 16 – 20 AC# CMPSOCCER616
Sess: July 14 – 18 AC# CMPSOCCER714

Kent County Recreation Center, Turf Field, 1683 New Burton Road, Dover. Designed for players of all levels who want to learn and improve their fundamental soccer skills in a fun and encouraging environment. Camp participants will learn these fundamentals of soccer through games and competitions. Please bring lunch, drinks, and snacks each day. Refrigeration will not be available so pack accordingly. Cleats and shin guards are required (bring a pair of clean indoor shoes/sneakers in case of bad weather).

EDUCATIONAL

BREATH WORK & SOUND BATH MEDITATION

Ages: 16 & up Fee: \$30
Days: Wed Time: 7:00-8:00pm
Sess: July 9 AC# SOUNDBATH709
Sess: July 16 AC# SOUNDBATH716
Sess: July 23 AC# SOUNRBATH723

Location TBD, Clayton. Combining the power of breath with healing sound, this class assists students in taking control of their stress response, sleep quality & energy levels regardless of age or health. Students will practice proper breathing techniques while listening to gentle tones designed to induce an almost immediate feeling of well-being. A guided meditation will accompany for part of the class. Bring a yoga mat/cushion or use one provided. Led by certified Breath Coach & Meditation Instructor Audra Littleton. Visit www.Find-ur-Balance.com for more info. Min 5, Max 10.

INTRODUCTION TO “EARTHING”

Ages: 16 & up Fee: \$41
Days: Wed Time: 6:30–8:30pm
Sess: June 11 AC# ITE611
Sess: Aug 27 AC# ITE827

Big Oak Park, 417 Big Oak Rd, Smyrna. Pavilion (rain or shine). Also known as “grounding”, tens of thousands of testimonials prove this is so much more than a trend! In this hands-on workshop, students will learn the science behind the practice and discover why it rapidly decreases inflammation while improving blood flow, energy levels, sleep quality, and stress resistance, all by simply connecting to the planet’s natural electric currents—even while indoors! Students will have an opportunity to test various connections using technology, and spend some quality time earthing, while being guided in some easy breath techniques. Take your health in your own hands this summer! Led by Breath & Wellness Coach, Audra Littleton. Visit www.Find-ur-Balance.com for more information. Min of 5, Max of 20.



FITNESS

AQUA AEROBICS CARDIO BLAST

Ages: 18 & up Fee: \$75
Days: Tue & Thu Time: 6:00-7:00pm
Sess: June 17 – July 17 AC# FMMCAQ617
Sess: July 29 – Aug 28 AC# FMMCAQ729

Modern Maturity Center, 1121 Forrest Ave., Dover. Take advantage of water’s natural resistance to get an aerobic and toning workout without the wear and tear on your joints. This program focuses on cardiovascular fitness and range of motion and is a great workout for seniors. Participants must bring their suit and towel. Instructor: Betsy Gustafson, personal trainer and fitness instructor with 30+ years of experience. Min 20, Max 25.

ZUMBA GOLD PLUS

Ages: 16 & up Fee: \$65
Days: Tue & Thu Time: 5:00-6:00pm
Sess: June 10- July 22 AC# FZGP610
(no 6/19)

Kent County Recreation Center, 1683 New Burton Road, Dover. Come join this fun and easy to follow Zumba class. This version of Zumba allows you to dance at your own pace. Incorporates verbal instruction in addition to hand cueing to further assist in the teaching process. This is a low impact dance party where you choose the intensity you want. You will groove to Latin, R&B, Oldies, Big Band, Rock, Dance Hall, Pop, and more. There is something for everyone and at every fitness level. This is a no judgement zone, with tons of fun. Hope to see you there. Instructor: Denise Jackson. Min 10, Max 25.

LEAGUES

ADULT CO-ED VOLLEYBALL LEAGUE

Ages: 16+ Fees: \$300 on or before 5/25/25
\$350 after 5/25/25
Registration closes 6/1/25
Days: Mon Time: 6:00-9:00pm
Sess: June 9 – Aug 11 AC# ASUVBLG609

Kent County Recreation Center, 1683 New Burton Rd., Dover. Matches are best of 3, rally scoring, games are scored to 25. Regular season based on number of teams. The league concludes with single elimination playoffs. For more information call Jonathan Stewart 302-744-2489 or email at jonathan.stewart@kent-countyde.gov



LEAGUES

BOYS HIGH SCHOOL BASKETBALL LEAGUE

Ages: 13 - 18 Fees: \$400
(\$50 Early Bird Discount for registrations before Wed 5/9 at 5:00PM)
Days: Thur Time: 6:00, 7:00 & 8:00pm
Sess: May 22–July 31 AC# BHSBL522
No Games: 6/19, or 7/3

Kent County Recreation Center, 1683 New Burton Rd, Dover. **School teams only.** League features an seven-week competitive basketball experience with a single elimination tournament the final week (top 6 teams make the tournament). Teams have the opportunity to reserve a half court for practice immediately prior to scheduled games. Games will be 20-minute halves with a running clock (2 timeouts per team per half, the game clock will be stopped the final minute of each half for in-bounding, fouls, and injuries) officiated by DIAA officials. Teams must provide game jerseys.

BOYS HIGH SCHOOL LACROSSE LEAGUE

Ages: 13 - 18 Fee: \$87
Days: Mon Time: 7:00pm
Sess: June 23 – July 28 AC# YBLAXLG623

Kent County Recreation Center, Turf Field 1683 New Burton Road, Dover. This pick-up league is designed to develop fundamental skills and techniques that will help prepare your game at the next level. All players will be placed on teams by the Coaching staff and will compete in games over the 6-week time frame. Players need to provide their own equipment (helmet, mouthpiece, gloves, elbow/shoulder pads and stick). For more information, call Joseph Paugh at 302-744-2486.

CO-ED SUMMER SOFTBALL LEAGUE

Ages: 16 & up Fee: \$525
Days: Sun Time: 9:00am
Sess: June 1 AC# COEDSOF601

Browns Branch County Park, 1415 Killens Pond Road, Harrington. 6-week regular season (12 games) with playoffs to end the league. All teams make playoffs, 1st & 2nd place trophies awarded. League will be ASA governed. Contact Brent Mollohan, 302.744.2491 for more information.



LEAGUES

KENT YOUTH VOLLEYBALL LEAGUE (RECREATIONAL DIVISIONS)

Fees: \$75

Ages: Junior Division (10 to 13)
Days: Mon & Wed Time: 6:00-8:00pm
AC# JRKYVL611

Ages: Rec Division (14 to 17)
Days: Mon & Wed Time: 6:00-8:00pm
AC# RDKYVL611

Sess: June 11 - Aug 6
(no 6/30 or 7/2)

Kent County Recreation Center, 1683 New Burton Rd, Dover. Teams will play games on Wednesday nights and have practice on Monday nights. A full schedule of team practices and games will be distributed at the beginning of the league. Wednesday June 11st and Monday June 16th will be a player showcase and nights. Teams are co-ed. Games are "best 2 of 3" matches played to 15 points with rally scoring. The first game will be June 25th. Team T-Shirts will be provided.

Additional volunteer coaches and assistants are needed. If you are over 18 and would like to volunteer, please call the Recreation Office at 302-744-2495. **(Background checks are required for all coaches and assistants and will be administered free of charge.)**

KENT YOUTH VOLLEYBALL LEAGUE (SCHOLASTIC DIVISIONS)

Fees: \$400

(\$50 Early Bird Discount for registrations before Wed 5/9 at 5:00PM)

Ages: Middle School AC# KYVLS616
Days: Mon Time: 6:00-9:00pm

Sess: June 16 - July 28
Ages: High School AC# KYVHS618
Days: Wed Time: 6:00-9:00pm
Sess: June 18 - July 30

Kent County Recreation Center, 1683 New Burton Rd, Dover. **School Teams only.** Matches are best of 3, rally scoring, games are scored to 25. Regular season based on number of teams. The league concludes with single elimination playoffs. For more information call Jonathan Stewart 302-744-2495 or email at jonathan.stewart@kentcountysde.gov



KYBL FREE AGENT SUMMER SERIES

Fees: \$40

Ages: 9-12 AC# FASSY625
Ages: 13-16 AC# FASSR625
Days: Wed Time: 6:00-8:00pm
Sess: June 25 - July 30

Kent County Recreation Center, 1683 New Burton Rd, Dover. Join us for an exciting and dynamic basketball league designed to keep youth engaged, active, and having a blast on the court! Our Kent Youth Basketball League (KYBL) Free Agent Summer Series offers a unique twist on traditional leagues by assigning players to new teams each week, fostering camaraderie, skill development, and a fun-filled atmosphere. This league focuses on fostering fundamental basketball skills in a supportive and encouraging environment. Participants receive guidance and coaching while experiencing a variety of playing styles. Each division can only accept 30 participants. Register today and be part of the action!




KENT YOUTH VOLLEYBALL LEAGUE

SCAN TO REGISTER



SCAN ME

Kent County Parks & Recreation

SPACE IS LIMITED IN EACH DIVISION

MIDDLE SCHOOL & HIGH SCHOOL DIVISIONS

GAMES AT 6, 7 & 8 PM
starting 6/16 & 6/18

\$400

MIDDLE SCHOOL Mondays
HIGH SCHOOL Wednesdays

TEAM
REGISTRATION
FEE

SCHOOL TEAMS ONLY

YOUTH & REC DIVISIONS

PLAYER SHOWCASE

6/11 & 6/16

PRACTICES 6 & 7 PM

6/18 & MONDAYS starting 6/23

GAMES 6 & 7 PM

WEDNESDAYS starting 6/25

\$75

*INCLUDES A
TEAM SHIRT

VOLUNTEER COACHES NEEDED!

Call 302-744-2495 to volunteer.

WE BELIEVE THAT HARD WORK AND PLAYING TO THE BEST OF ONE'S ABILITY IS MORE IMPORTANT THAN THE OUTCOME OF GAMES!

For More Information or to Register:

Call: 302-744-2495 www.secure.rec1.com/DE/kent-county-de/catalog Email: ParksRec@kentcountysde.gov



LEAGUES

MENS PICK-UP LACROSSE LEAGUE

Ages: 18+ Fee: \$5 Per Night (Goalies FREE)
Days: Mon Time: 8:00-9:30pm
Date: June 30

Kent County Recreation Center, Turf Field, 1683 New Burton Road, Dover. The league is for players 18 years and older who want to continue playing lacrosse in the off-season. THIS IS A LOW CONTACT LEAGUE. League play will be limited to stick checks and minimal (involuntary) body checks. Players need to provide their own equipment (helmet, mouthpiece, gloves, elbow/shoulder pads light/dark pinnie or jersey and stick). For more information, call Joe Paugh at 302-744-2486 or email at joseph.paugh@kentcountyside.gov.

PICKLEBALL LADDER LEAGUE

Ages: 18 & up Fee: \$30/person
Days: Tue Time: 6:00pm
Sess: June 10 AC# PBLEAG610

Kent County Recreation Center, 1683 New Burton Rd, Dover. League will play 6 weeks. Basic understanding of Pickleball rules and game play is necessary. Trophies awarded to 1st and 2nd place finishers.

SUMMER FIELD HOCKEY LEAGUE

Ages: 13-17 Fee: \$65.00
Days: Sun Time: 6:00-7:00pm
Sess: July 6 - Aug 10 AC# SFHL706

Kent County Recreation Center, Turf Field, 1683 New Burton Rd, Dover. Designed to prepare established middle school and high school players for their upcoming fall season. Each player will be placed on a team by coaching staff and will compete in games over a 6-week course. An instructional session will take place prior to game time for teams to practice. Coaches will lead the practices, and then they will switch to umpiring games. Umpires will explain calls as needed to grow an understanding of the game. The games will be either 7v7 or 11 v 11 depending on number of registrants.

YOUTH LACROSSE LEAGUE

Ages: 9 - 13 Fee: \$87
Days: Mon Time: 5:30pm
Sess: June 23 - July 28 AC# YLAXLG623

Kent County Recreation Center, Turf Field 1683 New Burton Road, Dover. This pick-up league is designed to develop fundamental skills and techniques that will help prepare your game at the next level. All players will be placed on teams by the coaching staff and will compete in games over the 6-week time frame. Players need to provide their own equipment (helmet, mouthpiece, gloves, elbow/shoulder pads and stick). For more information, call Joseph Paugh at 302-744-2486.

MUSIC/DANCE

KCRC BEGINNER SOUL LINE

DANCING

Ages: 16 & up Fee: \$41
Days: Tue Time: 6:30-7:30pm
Sess: July 1 - July 29 AC# KCRCSLD701
Sess: Aug 5 - Sept 2 AC# KCRCSLD805
Sess: Sept 9 - Oct 7 AC# KCRCSLD909

Kent County Recreation Center, 1683 New Burton Rd, Dover. Looking for a great way to burn calories, meet new people, and improve your coordination while enhancing your dance moves? Well look no further; Soul Line Dancing is for you. Come out and join the fun at our beginner level classes as you learn popular dances such as the Electric Slide, Wobble, Cupid Shuffle, Uptown Funk, and many more. Instructors: Chuck & Kelly Cooper. Chuck & Kelly Cooper of C & K Soul Line Dancing will meet you in the Boys & Girls Club Conference Center when you enter on the right. Min 10, Max 25.



Kent County Parks & Recreation

KENT YOUTH SOCCER LEAGUE






SCAN ME

REGISTER TODAY!

Season begins September 2025



SPORTS INSTRUCTION SPECIAL EVENT

BEGINNER PICKLEBALL CLASS

Ages: 16 & up Fee: \$55
 Days: Tue Hours: 8:00 – 9:30 a.m.
 Sess: June 3 – July 1 AC#PICKBEG603
 (no 6/24)
 Sess: July 8 – 29 AC#PICKBEG708

Kent County Recreation Center, 1683 New Burton Rd., Dover. This class is for beginners only. Pickleball is designed for all skill and age levels and is very easy to learn. Knowledge of the game is not necessary. Basic drills, skills and rules of the game will be taught. Our indoor courts will make your Pickleball experience much more memorable. Minimum of 4, maximum of 14.

DUTCH 4V4 SOCCER

Days: Wed Fee: \$65
 Age Divisions:
 Ages 8 – 15 Time: 7:00–8:30pm
 Sess: June 25 – Aug 6 AC# DUTCH625

Kent County Recreation Center, 1683 New Burton Road, Dover. Players will arrive and be placed into teams on a small-sized field. Each game will last for approx., 20 mins and rotate until they play each team. Players of all skill levels will come together and play with and against different players each week.

GIRLS LACROSSE INSTRUCTIONAL PROGRAM

Ages: TBD Fee: TBD
 Days: TBD Hours: TBD
 Sess: TBD AC#TBD

Kent County Recreation Center, Turf Field 1683 New Burton Road, Dover. This Clinic is designed to develop fundamental skills and techniques that will help take your game to the next level over 6-Weeks. Players will receive instructional training and learn specific skill sets. Player needs to bring stick, goggles, sneakers and water bottle.

INTERMEDIATE PICKLEBALL CLASS

Ages: 16 & up Fee: \$55
 Days: Tue Hours: 10:00 – 11:30 a.m.
 Sess: June 3 – July 1 AC#PICKINT603
 (no 6/24)
 Sess: July 8 – 29 AC#PICKINT708

Kent County Recreation Center, 1683 New Burton Rd., Dover. Some previous experience of Pickleball is necessary. This class is designed for individuals who want to expand their knowledge and skills of the game. Serving, positioning, lob shots, dinking are just some of the skills that will be taught during this class. Minimum of 12, maximum of 14.

JR. NBA PRESEASON

Fees: \$50 (Includes T-shirt)
 Ages: 7 - 9 AC# JRNBPAPREA903
 Days: Mon & Wed Time: 6:00–7:00pm
 Ages: 10 - 12 AC# JRNBPAPREB903
 Days: Mon & Wed Time: 7:00–8:00pm
 Sess: Sept 3 – 29

Kent County Recreation Center, 1683 New Burton Rd, Dover. Players will take part in basketball skills development clinics that will teach fundamental basketball skills including ball-handling, shooting, rebounding, and passing. Players will rotate through skill development stations and participate in scrimmages to further develop skills in each division. Min 20, Max 50.

TINY TOT SOCCER - PARENT-CHILD

Ages: 2-4 Fee: \$40
 Days: Wed Time: 5:00–5:30pm
 Sess: June 25 – Aug 6 AC# TINYTOT625

Kent County Recreation Center, 1683 New Burton Road, Dover. This is an introductory class to develop the fundamental skills on how to play soccer. Players will receive guidance from a coach following a 6-week curriculum – Parents will lead their child through the practices. The main goal is to have fun! Must have cleats or clean sneakers. Min 10, Max 20.

TOT SOCCER SPORT INSTRUCTION

Ages: 4-6 Fee: \$50
 Days: Wed Time: 5:00–5:55pm
 Sess: June 25 – Aug 6 AC# TSOCRC625

Kent County Recreation Center, 1683 New Burton Road, Dover. This is an introductory class to develop the fundamental skills on how to play soccer. Players will receive training from coaches following a 7-week curriculum. The main goal is to have fun! We will meet outside on the turf field, must have cleats or clean sneakers, and shin guards. Min 10, Max 60.

YOUTH SOCCER SPORT INSTRUCTION

Ages: 7-12 Fee: \$55
 Days: Wed Time: 6:00–6:55pm
 Sess: June 25 – Aug 6 AC# YSOCRC625
 Beginner/Intermediate
 Advanced

Kent County Recreation Center, 1683 New Burton Road, Dover. This is an introductory class to develop the fundamental skills on how to play soccer. Players will receive training from coaches following a 7-week curriculum. The main goal is to have fun! We will meet outside on the turf field, must have cleats or clean sneakers, and shin guards. Min 10, Max 60.

KENT COUNTY POWER-UP TOURNAMENT SERIES

Ages: 9+ Fees: \$10
 Days: Wed Time: 5:30-9:00pm
 Sess: Mario Kart I - Aug 6 AC# KCPU806
 Sess: Mario Kart II - Aug 20 AC# KCPU820

Kent County Recreation Center, 1683 New Burton Rd, Dover. Are you ready to level up your gaming experience? The Kent County Power-Up Tournament Series is here! Compete in high- energy Mario Kart tournaments on a massive 25-ft screen with an epic sound system that will bring every course, power-up and race to life! Register for either Mario Kart tournament (or both!) Game schedule will be released once registration closes. This is more than just a tournament - it's an electrifying gaming event where skill, strategy, and fun collide! Do you have what it takes to Power-Up and claim victory? Minimum of 16, Maximum of 32. For more information call Joe Paugh or Jonathan Stewart 302-744-2495 or check out <https://secure.rec1.com/catalog> for more information.

Nintendo is not a sponsor of or affiliated with this tournament.

Terms for participating in and viewing Community Tournaments using Nintendo Games: https://en-americas-support.nintendo.com/app/answers/detail/a_id/63454.



Yoon's Martial Arts Summer Camp 2025



Kick, jump, and train your way through an action-packed summer at Yoon's Martial Arts! Our camp offers a perfect balance of fun and structure, keeping kids active and engaged throughout the day. Campers will build confidence, self-discipline, and focus while learning from our experienced black belt instructors in an environment that emphasizes respect.



Get Active!



Learn Martial Arts!



Have Fun!

More Information:

Session 1 (Theme: Hyper Tricks / Parkour): June 23, 2025 - June 27, 2025

Session 2 (Theme: Karate Kid / Cobra Kai): July 14, 2025 - July 18, 2025

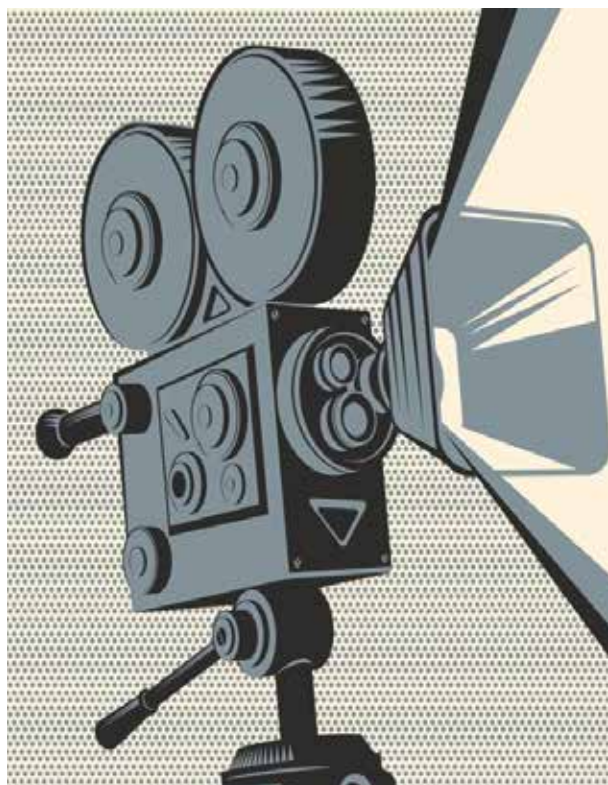
Ages: 6 to 12 years old



1111 South DuPont Hwy., Dover, DE 19901 · 302-734-4429 · yoonsma@gmail.com



Register at
www.KentCountyDE.gov



Be on the lookout for Upcoming FALL Movies & Dates



KENT COUNTY PARKS & REC

POWER-UP!

TOURNAMENT SERIES

MARIO KART TOURNAMENTS



☆ SERIES #1: 6 AUGUST 2025



☆ SERIES #2: 20 AUGUST 2025



KENT COUNTY RECREATION CENTER
1683 NEW BURTON RD, DOVER

NINTENDO IS NOT A SPONSOR OF OR AFFILIATED WITH THIS TOURNAMENT.
TERMS FOR PARTICIPATING IN AND VIEWING COMMUNITY TOURNAMENTS USING NINTENDO GAMES™ ACCOMPANIED WITH THE FOLLOWING URL:
https://en.america-support.nintendo.com/app/answers/detail/a_id/83454



Kent County Parks & Recreation

FALL 2025 Season
Starts in September

NFL YOUTH FLAG FOOTBALL

TWO AGE DIVISIONS:

7-10yrs Division

11-14yrs Division



For More Information or to Register:
Call: 302-744-2495 www.secure.rec1.com/DE/kent-county-de/catalog mail: ParksRec@kentcountysde.gov



GENERAL PARK RULES

1. Drugs, alcoholic beverages, and weapons are prohibited.
2. Audio devices, public address systems, and musical instruments are prohibited.
3. Motor vehicles restricted to designated parking areas only.
4. No littering, all parks are "carry-in, carry-out" facilities.
5. Lewd behavior and obscene language is prohibited.
6. No solicitation or vending without official Kent County permit.
7. No person shall harm any animal, vegetation or structure.
8. Dogs must be on a connecting leash and not pose a threat to any person.
9. No auto repair or maintenance activities in parking areas.
10. Use of metal detectors and the removal of antiquities are prohibited.
11. Organized team and league practice by official Kent County permit only.
12. Use of park and parking lots is restricted to daylight hours only.
13. No golf or equestrian activities.
14. Commercial photography is prohibited.
15. No open fires.
16. All persons using park facilities do so at their own risk.
17. No water activities unless permitted.

For specific park rules, please call the Parks and Recreation Office.

Kent County Park Facility Chart	Brecknock	Browns Branch	Big Oak	Lebanon Landing	Tidbury Creek	Kesselring	Hunn Nature
Location:	80 Old Camden Rd, Camden	1415 Killens Pond Rd, Harrington	417 Big Oak Rd, Smyrna	1400 Sorghum Mill Rd, Dover	2233 South State Street, Dover	1683 New Burton Rd, Dover	1624 Sorghum Mill Rd, Dover
Public Restroom	√	√	√			√	
Playground	√	√	√		√		
Horseshoe Pits	√	√					
Nature Trail	√	√			√		√
Walking Trail	√	√	√			√	√
Sand Volleyball	√	√					
Pavilion	√		√		√		
Softball Fields	√	√	√				
Multi-Purpose Fields	√	√	√			√	
Picnic Area	√	√	√	√	√		
Outdoor Grill	√	√	√		√		
Nature Center	√						
Fitness Area	√	√	√				
Bike Rack	√	√	√	√	√	√	
Field Rentals	√	√	√			√	
Stage	√						
Fishing Pond					√		
Dog Park					√		
Fishing Pier				√			
Boat Ramp				√			
Recreation Center						√	

PAVILION USE GUIDELINES

Pavilions are intended for general public use with the following restrictions:

1. No individual or group may hold, reserve, rope off, or otherwise take up more space/tables than needed AT THE TIME OF OCCUPATION.
2. No individual or group may require current users to leave/vacate the pavilion.
3. Decorations (balloons, table cloth, streamers, signs, etc.) for any gathering are prohibited.
4. Any Kent County Co-sponsored Event will be posted with specific date of event for public notice prior to the event.
5. All park facilities are "carry -in, carry-out" facilities. Please remove all trash upon your departure.
6. Amplified music (boom boxes, DJ services, PA systems, etc.) are prohibited.

Questions? Please call the Parks and Recreation Office at 302-744-2495.

DROP IN PUNCH CARD

All drop-in activities at the Kent County Recreation Center require a valid "Drop-In Punch Card" to participate. The \$20 punch card is good for 10 single drop-in activity sessions (\$2 per session) such as basketball, pickleball, soccer, volleyball, etc. (Refer to posted schedule on the website, Facebook and Office for times.) If you are pre-registered for a fee based program you do not need a drop-in punch card for those programs.

HOW TO PURCHASE

Punch Cards may be purchased in person at the Kent County Recreation Center:

Regular Business Hours – Monday through Friday, 8:00 a.m. to 5:00 p.m. using Cash or Credit Card ONLY.

Non Business Hours – **Monday through Friday after 5:00 p.m. and Weekends – subject to the following restriction; limit of 2 per purchaser, CASH ONLY (no bills greater than \$20 will be accepted.)**

Registration form must be filled out completely with each purchase.

ADDITIONAL INFORMATION

Cards are not available for online purchase, no refunds or exchanges, lost or stolen cards will not be replaced. You may use your card for guests or groups, as long as there are enough punches available.





KENT COUNTY PUBLIC LIBRARY

497 S. Red Haven Lane, Dover | 302-744-1919



SUMMER 2025 PROGRAMS & EVENTS

All programs are free, open to the public, and will be held at the Kent County Public Library located at 497 S. Red Haven Lane, Dover, unless stated differently. **Preregistration is required as noted.** Register online at www.tinyurl.com/KCPLcalendar or by calling (302) 744-1919.

Please Note: The Library reserves the right to adjust program dates, times, enrollment maximums and program/event cancellations. If you register for a program and do not attend and do not cancel, the Library reserves the right to decline your registration for future events. *Parent or other responsible adult must be present in the library, including during programs, for any child/youth under the age of 16.* It is the policy of the Kent County Levy Court that all programs be accessible to all qualified handicapped individuals as provided in Section 504 of the Rehabilitation Act of 1973. If you or the person(s) you are registering, need reasonable accommodation for your program of interest, please contact the Kent County Public Library before registering to discuss the matter with the program coordinator(s). *The Library may photograph programs and participants for publicity purposes, including posting to social media sites.*

FREE FOR ALL AGES

COLOR OUR WORLD: 2025 SUMMER READING PROGRAM

June 1-August 13 | All ages

Open to all ages — children, teen and adults — FREE summer activities packed with fun, prizes and events. The 2025 Summer Reading Program theme “Color Our World” offers adventures, discoveries, and creativity for all ages! Earn free ice cream tokens and other incentives/prizes simply by reading over the summer.



Registration now takes place completely online at <https://www.kentcounty.beanstack>, or scan the QR code with your mobile device camera to sign up.



HOLIDAY CLOSURES:

The Library and Mobile Library will be closed
May 26, June 19, July 4, and September 1.

KCPL LONGACRE ANNIVERSARY

Monday, June 23, 5:30-7:30 p.m.

Kent County Public Library has been open at the Centre in Longacre for 15 years! Drop by to celebrate with us!

COLOR OUR WORLD BUTTON DESIGN CONTEST

Deadline: Friday, June 20, between 9:00 a.m.-7:45 p.m.

Ages 5-8; Ages 9-12; Ages 13-18; Ages 19+. Make a design for a 3-inch button. All designs must be original and created entirely by the contestant; no AI/CGI images. No online entries. After judging, entries will be on display in Kent County Public Library through June 30, 2025. Prizes will be awarded for each class, using the winning contest entry design: First place: 10 pins; Second Place: 5 pins; Third Place: 1 pin.

SHOEBOX “FLOAT” CONTEST

Drop-off Date: June 20 between 9 a.m.-7:45 p.m.

One entry per family. Each family decorates one shoebox as if it were a float in a parade, incorporating this year’s Summer Reading Program theme: **COLOR OUR WORLD**. Food is not to be used in decorating the float. Do not put wheels on float or put the float on a truck body. No pictures of the contestants on the floats; names and phone number to be placed on the bottom of the float. All entries to be removed from Kent County Public Library on Sunday, June 29 between 1-4:45 p.m.

SUMMER SKETCHBOOK

Thursdays in July, 10:00-10:45 a.m.

All ages. Drop by! We’ll explore a different artistic challenge each week via simple, creative projects and exercises.

PUZZLE SWAP

Saturday & Sunday, July 5 & 6 – 1:30-3:30 p.m.

Bring in your gently used, complete boxed jigsaw puzzles to KCPL during normal library business hours between June 20-July 3. You will receive voucher(s) to select the same number of puzzles from the accumulated donations on the day(s) of the swap meet. Vouchers are only valid on the days of the swap – July 5 & 6. **We cannot accept donated puzzles on the designated days of the swap.** *Please do not put donated puzzles in the outside book return*

OPEN STUDIO – TINY ART

Saturday, June 21 and/or July 12 – 10:00 a.m.

All ages; preregister. Take part in an “open studio” session with on-site professional illustrator and artist Christy Shaffer to provide assistance and guidance to create a tiny painting. A variety of materials will be available for use to complete your tiny masterpiece. **All completed canvases will be held for display in KCPL’s Tiny Art Gallery Exhibit** (Bring your own tiny canvas if you wish to take your completed project home with you.) Limited supplies; preregistration for each session is required. **No walk-ins, please!**

KCPL TINY ART GALLERY/SHOW

July 16-30

All ages. Create a tiny painting – maximum size 6”x 6” – for our special gallery which will be shown in KCPL’s display case. Please keep the subject artwork “family friendly.” Paintings must be dropped off at the library by July 13, along with a 3’ x 5” card including the artist’s name and contact information. Please collect your artwork by August 8.

SHARK WEEK: July 6-12

Humans are the only species on the planet that celebrate Shark Week (not even sharks celebrate Shark Week...) but it is a terrific opportunity to dispel some of the misconceptions and fears associated with sharks. Please preregister for these programs. See <https://www.tinyurl.com/KCPLcalendar> for details/registration.



KENT COUNTY PUBLIC LIBRARY

497 S. Red Haven Lane, Dover | 302-744-1919



CHILDREN'S & FAMILY PROGRAMS

All programs are free and open to the public, unless stated differently. **Preregistration is required as noted.** Please call (302) 744-1919 or stop by the circulation desk to register. You can also register online at www.tinyurl.com/KCPLcalendar (*Parent or other responsible adult must be present in the library, including during programs, for any child/youth under the age of 16.*) Groups of 5 or more, please give advance notice of your visit.

CURSIVE WRITING

Mondays: July 14, 21, & 28 at 10:00 a.m.

Cursive writing is an important tool for success in school and beyond. Being able to write in cursive has been shown to improve spelling and composition skills as well as help the brain learn and remember better! Children who practice cursive writing will also gain self-discipline, another necessary skill for school success. Ages 8-12. Please pre-register.

TOUCH-A-TRUCK

Wednesdays, June 25-August 13, 10:00 a.m.

Children of all ages are invited to explore the vehicles that fascinate them. This hands-on event is the perfect opportunity for children to see, touch, interact with and learn about a variety of vehicles and meet drivers and some local first responders! *Takes place in the parking lot between the pond and library atrium. Participating children receive Take-and-Make kits! Event canceled if it rains; no rain dates scheduled.*

PAWS FOR READING

Thursdays, June 5, July 3 & 17, August 7 & 21, September 4 & 18 -- 6:30 p.m.

Bring your child to the library to read aloud for 10 minutes to a friendly therapy dog provided by PAWS for People. Studies have shown that reading aloud to animals can actually help children improve their reading skills. This is a great opportunity for beginner, reluctant and even beginning English learner to practice in a non-judgmental environment with a book of their choice. Teens and adults are welcome to read too! One reader per dog, per 10-minute reading session. First come, first served. Ask about the 5x incentive!

STORY!TIME

Weekly on Fridays at 10:00 a.m.

Children under the age of six (and their parent or guardian): Join us at the library every Thursday morning for stories, songs, crafts and more! Check our Facebook Events tab for each week's theme at KCPLibrary -- *Groups of 5 or more, please give advance notice of your visit.*

UNIQUELY UNICORN

Saturday, July 19, 10:00-11:30 a.m.

Spend an enchanted morning celebrating magical unicorns! Enjoy crafts, activities, songs & stories. Limited to 24 pre-registered participants ages 6-9, and their adults.

ALADDIN

Friday, July 25 -- 10:00 a.m.

Enjoy the popular tale of a young street urchin who finds a magic lamp hidden in a secret cave. Not only is there a powerful genie living in the lamp, but Aladdin also meets the bumbling apprentice genie of the ring. The two genies help Aladdin overcome a snarky sorceress and win the heart of the princess. Performed by the Rehoboth Summer Children's Theatre.

REPTILE WONDERS

Sunday, July 27 -- 2:00 p.m.

Join Reptile Wonders, "The Nature Center on the Go," for an interactive program on reptiles featuring live snakes, lizards, tortoises and turtles from around the world. This is an in-person event. Limited seating; first come, first served.

THE SCIENCE BEHIND THE COLORS IN NATURE

Thursday, July 31 -- 6:30 p.m.

Grades 1-5. Participants will learn about prisms, kaleidoscopes, camouflage, rainbows, and blue skies as they explore different concepts of color in nature. Pre-registration is a must! (*This program is funded, in part, by the Delaware Division of Libraries*)

MEET THE AUSTRALIAN BLUE HEELER DOG

Thursday, August 7 -- 6:00 p.m.

Meet "Bluey", the inexhaustible Blue Heeler dog, who loves to play and turn everyday family life into extraordinary adventures! Enjoy a brief story time, meet-and-greet / photo op, and then meet the PAWS dogs, who will be onsite to be read to!

DIAL-A-STORY: (302) 741-4171

Call (302) 741-4171 for stories, jokes, and more! Call any time from any place! You don't need a library card or to be in Delaware to listen. Call as many times as you'd like as options change frequently. It's free! (*Dial-a-Story is available through the generosity of the Friends of Kent County Public Library.*)

TWEEN/TEEN PROGRAMS

All programs are free and open to the public, unless stated differently. Preregistration is required as noted. Please call (302) 744-1919 or stop by the circulation desk to register. You can also register online at www.tinyurl.com/KCPLcalendar (*Parent or other responsible adult must be present in the library, including during programs, for any child/youth under the age of 16.*)

DELAWARE ANIME SOCIETY

Saturdays, July 12 & August 9 -- 1:00 p.m.

Ages 13 and up. The Delaware Anime Society is a place for those with an interest in Japanese anime (animation), manga (graphic novels), cosplay, music and pop culture to meet in a fun and relaxed atmosphere. (Look for the Delaware Anime Society at *Dover Comic Con*, Saturday, June 14)

COLOR MY WORLD BOOK CLUB

Tuesdays, -- 6:30 p.m.

Ages 16 and up. Read a book with the focus color in the title, or which features the color in some fashion within the book. For example, "Red" could be *Where the Red Fern Grows* (Rawls) or *Scarlet* (Meyer), or *The Boyfriend List* (Oliver) which features a character named Ruby Oliver. Share your reaction to the book with other readers and add to your TBR list! **Blue:** June 24; **Red:** July 8; **Purple:** July 22; **Green:** August 5.

ONE-OF-A-KIND DIY "KICKS"

Saturday, June 7 -- 10:00 a.m.

Ages 12 and up. Hit the streets this summer vacation in personalized shoes -- it's time to get crafty -- doing it yourself is always in style. You supply the canvas sneakers (no leather), and we'll have a variety of fabric paint and embellishments for you to experiment with! Mandatory preregistration; no walk-ins! Must have 10 registered by June 4th for program to take place.



KENT COUNTY PUBLIC LIBRARY

497 S. Red Haven Lane, Dover | 302-744-1919



REDWORK EMBROIDERY

Thursdays, July 10, 17 & 24, 4:00 p.m.

Ages 16 and up. Traditional **Redwork** embroidery designs use only a few simple embroidery stitches. This class meets three times and participants complete an embellished pillowcase (all materials provided). Class size very limited; pre-registered participants only.

SQUEEGEE ART

Tuesday, July 15 – 6:30 p.m.

Ages 10-18. Using a squeegee tool on the seemingly plain surface, a gentle scrape instantly reveals a hidden image! Must have 15 pre-registered participants for program to take place.

DRAWING “DANGLES”

Tuesday, July 1 – 6:30 p.m.

Ages 10-18. Explore the art of drawing “dangles” – a playful new art form for people who love journaling, coloring, tangles, lettering, and being creative. Must have 15 pre-registered participants for program to take place.

MEET ORPHEUS COLLAR

Tuesday, August 12 – 6:30 p.m.

Ages 10 and up. Orpheus Collar, *New York Times* best-selling graphic novelist (*The Kane Chronicles* and *Percy Jackson and the Olympians* series), will be leading a hands-on workshop for would-be graphic novelists and manga artists. Free, but pre-registration is required. (*This program made possible through a collaboration between the Delaware Division of Libraries and Kent County Division of Libraries, and support from the Delaware Division of Arts.*)

See “Adult Programs” for other age-appropriate programs/events.

ADULT PROGRAMS

All programs are free and open to the public, unless stated differently. **Preregistration is required as noted.** Please call (302) 744-1919 or stop by the circulation desk to register. You can also register online at www.tinyurl.com/KCPLcalendar

AARP SMART DRIVE TEK

Sunday, June 8, 2:00 p.m., or Friday, June 27, 10:00 a.m.

Get smart about new vehicle technology! Join a FREE 90-minute Smart DriverTEK Workshop to learn about technology in your automobile that may help you drive more safely and more confidently in your current or future car. Registration for this class is through AARP; sign up now at mpr777@gmail.com or call (877) 805-0458.

DELAWARE JOBLINK

Sundays, June 22, July 20, and August 17, 1:30-4:30 p.m.

Are you job hunting? A Delaware JobLink specialist visits KCPL each month to help job seekers create an account on Delaware JobLink, search the more than 10,000 jobs using keyword or location criteria, write a resume and update interview skills, and discover state or federally funded training programs to enter a new career or upskill for your current role! *Offered in partnership with Delaware Department of Labor*

BOOKED FOR LUNCH

Mondays, June 2, July 7, August 4 – 12:30 p.m.

Bring your own brown bag lunch and discuss what you are currently reading with the group – no assigned book!

COLOR MY WORLD BOOK CLUB

Tuesdays, 6:30 p.m.

Read a book with the focus color in the title, or which features the color in some fashion within the book. For example, “Red” could be *The Hunt for Red October* (Clancy), or *Ruby* (C. Bond), or *Gone with the Wind* (Mitchell) which features the character Scarlett O’Hara. Share your reaction to the book with other readers and add to your TBR list! **Blue:** June 24; **Red:** July 8; **Purple:** July 22; **Green:** August 5.

SQUEEGEE ART

Tuesday, July 29 – 6:30 p.m.

Ages 18 and up. Using a squeegee tool on the seemingly plain surface, a gentle scrape instantly reveals a hidden image! Must have 15 pre-registered participants by July 22nd for program to take place.

ARTS & LETTERS BOOK CLUB

Wednesdays, June 4, July 2, August 6 -- 12:30 p.m.

Fiction and non-fiction books related to the various arts and world cultures. June 4: *The Only Woman in the Room* (Benedict); July 2: *Seven Husbands of Evelyn Hugo* (Reid); August 6: *Benjamin Franklin: An American Life* (Isaacson)

REDWORK EMBROIDERY

Thursdays, July 10, 17 & 24, 4:00 p.m.

Traditional **Redwork** embroidery designs use only a few simple embroidery stitches. This class meets three times and participants complete an embellished pillowcase (all materials provided). Class size very limited; pre-registered participants only.

WELL-READ BOOK CLUB

Thursdays, June 12, July 3, August 14, 6:30 p.m.

Read across a broad spectrum of literature both old and new, including contemporary or classic novels, plays, poetry and short story anthologies. See circulation desk to check out this month’s selection!

FRIDAY THE 13th BOOK CLUB

Friday, June 13, 11:30 p.m.-Midnight (off site at McGlynn’s Pub)

The sole Friday the 13th of 2025 falls on June 13, 2025 -- exactly 26 weeks (2x13 weeks) after the previous meetup on December 2024 Friday the 13th. We’ll be meeting at McGlynn’s (800 N State St, Dover) to discuss *The Yellow Wallpaper* by Charlotte Perkins Gilman. The short story chronicles the psychological horror of a woman’s descent into madness. Copies of the story are available at the Circulation Desk (while supplies last) and online at Google Books (free).

COLOR MY WORLD FILM SERIES

Fridays, 6:00 p.m.

Call the Circulation Desk (302-744-1919) to confirm each screening’s title or visit the online calendar of events (<https://www.tinyurl.com/KCPLcalendar>), to register. Must have 10 preregistered people by Wednesday prior to screening or program is cancelled.

CRAFT: DIAMOND ART

Thursday, July 31, 6:30 p.m.

Diamond painting is a popular craft that combines artistic expression and relaxation. Learn the basic techniques to this fun and engaging disconnect from daily stressors and enjoy a boost of self-esteem when you complete a 6x8 in tiger-themed project. Free, but **pre-registration is mandatory** – no walk-ins!



KENT COUNTY PUBLIC LIBRARY

497 S. Red Haven Lane, Dover | 302-744-1919



GARDENING WITH KETURAH

Mondays, June 16, July 14, and August 11, 6:30 p.m.

From container gardens that fit on your porch or apartment balcony, to starting a garden from vegetables you bought at the grocery store, to learning to start a rose bush from a cutting – Keturah can lead you step-by-step to success. Check online calendar of events each month's focus when you sign-up for each class. Have you checked out KCPL's Seed Library?

YES OR NO? QUIZ GAME

Tuesday, August 19, 6:30 p.m.

The timer is running and you must answer at least 10 questions, avoiding the words "Yes" and "No," in under a minute! Take part as a contestant or enjoy the fun from the audience! Winners receive a small prize.

"LINUS" THE MOBILE LIBRARY: THE FRIENDLY LIBRARY ON THE HIGHWAY

<https://www.facebook.com/groups/1348383312440737>

(Effective June 1, 2025-August 31, 2025)

The Kent County Division of Libraries operates a mobile library ("LINUS") that makes weekly stops throughout Kent County. Register for a library card, sign-up for the Summer Reading Program, borrow materials, use the unit's free Wi-Fi hotspot, and more.

MONDAYS

"LOBBY DROPS" VARIOUS

TUESDAYS

11:30 a.m. - 12:30 p.m. FREDERICA SENIOR CENTER
2:00 - 3:00 p.m. BYLER'S (RTE8)

WEDNESDAYS

9:00 - 9:45 a.m. BOWERS BEACH
10:15 - 11:00 a.m. KC ADMINISTRATION BUILDING
11:30 a.m. - 12:30 p.m. HARMONY SENIOR LIVING

THURSDAYS

9:00 - 11:00 a.m. CALVARY CHRISTIAN ACADEMY
3:00 - 4:00 p.m. TRE SORELLE

FRIDAYS

10:00 - 11:00 a.m. SPRING MEADOW
12:00 - 1:00 p.m. WESTMINSTER
3:00 - 4:00 p.m. DAFB PLAYGROUND

BOOK DONATIONS

June 1-5, July 1-3 & 5; August 1-5

The Friends of Kent County Public Library accept clean, gently used, boxed book & movie (cd or Blu-ray) donations (no more than 10 banker boxes per family per month) at the front desk of Kent County Public Library during regular hours of operation. A receipt is provided upon request. Thank you for your support of the Friends; we hope you will consider membership in this library advocacy and support organization. Learn more at <https://www.facebook.com/groups/kcplfriends>

KENT COUNTY PARKS AND RECREATION
1683 NEW BURTON ROAD
DOVER, DE 19904

PRSRT STD
U.S. POSTAGE
PAID
DOVER, DE
PERMIT #23

ECRWSS
POSTAL CUSTOMER

Kent County Levy Court has made the decision to pause the costly printing and bulk mailing of the "Community Newsletter and Parks, Recreation, and Library Activity Guide". Our plan moving forward is to market and publish a NEW digital version of the newsletter using our www.kentcountyde.gov website, GovDelivery (a subscription email program), approved social media platforms such as Facebook and Instagram, and other potential digital marketing outlets.

If this plan is successful, Kent County will continue with digital marketing. Success will be judged in part by the rate of registration for the community programs offered in the digital Activity Guide for the Fall 2025 and Winter 2025-26 seasons.

Kent County Levy Court appreciates your understanding during this transition.

To sign up immediately for GovDeliver, navigate to:

https://public.govdelivery.com/accounts/DEKENTCO/subscriber/new?topic_id=DEKENTCO_21

Or simply use the provided QR Code:



2025 SUMMER ARTS IN THE PARK CONCERT SERIES

Sponsored by Kent County Levy Court

Pack a picnic basket, bring a blanket or lawn chair, and join us at **Brecknock County Park** in Camden (80 Old Camden Road) every Wednesday evening at **6:30 p.m.** for free, live entertainment beginning **May 28 – August 13**.

- May 28 — Best Kept Soul** (*R&B/soul/dance*)
- June 4 — Caya Sol** (*Reggae/R&B*)
- June 11 — Comfort Zone** (*R&B/soul/dance*)
- June 18 — Michael Christopher & Coastal Country** (*Country*)
- June 25 — The Funsters** (*Classic rock & soul*)
- July 2 — Philly Heart & Soul Band** (*1970s tribute*)
- July 9 — Sticky Situation** (*Classic rock & country*)
- July 16 — Reunion** (*Classic rock & soul*)
- July 23 — The Jones Boys** (*Classic country & oldies*)
- July 30 — Mike Hines & The Look** (*R&B/hip-hop/dance*)
- August 6 — Raising Cain** (*Classic rock & country*)
- August 13 — Dusty Vinyl** (*Classic rock*)



(In case of inclement weather, the program will move inside to the Kent County Public Library, 497 S. Red Haven Lane, Dover. The status of our events will be available on our Facebook page (search "KCPLibrary"), or by calling the library at (302) 744-1919 after 4:00 p.m.)