



KENT COUNTY LEVY COURT

Serving Kent County with Pride

Fall 2025



Photo by Raphael Senzamici

COMMUNITY NEWSLETTER, PARKS & RECREATION AND LIBRARY ACTIVITY GUIDE

Table of Contents

ABOUT THE LEVY COURT	03
PHONE DIRECTORY	04
COMMUNITY NEWSLETTER	05
PARKS & RECREATION ACTIVITY GUIDE	11
ARTS & CRAFTS	12
FITNESS	14
MUSIC/DANCE & SPORT INSTRUCTION	15
SPORT LEAGUES	16
SPECIAL EVENTS	20
REGISTRATION PROCEDURES	22
PARK INFORMATION	24
LIBRARY PROGRAMS & EVENTS	25

How to Register



Online

<https://secure.rec1.com/DE/kent-county-de/catalog>

In Office

1683 New Burton Rd. Dover DE, 19904
Mon - Fri 8am-5pm

DIRECTORS MESSAGE

Dear Kent County Community,

As the seasons change and a new slate of programs and events roll in, I'd like to take a moment to personally invite you — and your family — to get involved with Kent County Parks & Recreation.

Whether it's through a walk in one of our beautiful county parks, cheering from the sidelines of a youth league game, or participating in one of our diverse recreational programs, there's something for everyone to enjoy. Our parks and community programs are more than just places to play — they're spaces where our community grows stronger, healthier, and more connected.

At the heart of everything we do is our mission: To plan, promote, and develop recreational facilities and activities consistent with the needs of all Kent County residents — for now and for the future. This means providing high-quality, inclusive, and accessible opportunities that reflect the diverse interests and needs of the people we serve.

We hope this season you'll find something that excites you — whether that's trying something new, volunteering as a coach, or simply spending time outdoors with family and friends. Thank you for making Kent County a great place to live, play, and thrive.

We'll see you out there!

JEREMY SHEPPARD

**JEREMY SHEPPARD, DIRECTOR
KENT COUNTY COMMUNITY SERVICES**

About the Levy Court

Levy Court is your County government. Kent County Levy Court is comprised of seven elected Commissioners: six are elected from the districts in which they reside, and the seventh is elected at-large to represent the entire county. The Commissioners serve at the will of the electorate and answer solely to their constituents. Since the Commissioners are elected officials, it is customary to refer to them with the designation of Honorable. Levy Court responsibilities include: enacting planning and land use ordinances; providing parks and recreation facilities; establishing fees; providing emergency medical services; 911 communications; emergency management; approving sewer system construction; establishing the yearly tax rate and overseeing the county departments that support the mission of Levy Court. The Commissioners appoint a County Administrator who is responsible for managing the day-to-day operations of county government. Levy Court offices are located at 555 Bay Road in Dover Delaware. Residents may call 744-2300 to reach a County Office. For more information on Levy Court, please visit our website at www.kentcountyde.gov.



Hon. Joanne Masten
President
Commissioner, 1st District
302-270-1747



Hon. Jeffrey Hall
Commissioner, 2nd District
Committee: Planning Services
302-632-0757



Hon. Allan F. Angel
Commissioner, 3rd District
Committee: Administration
302-382-6735



Hon. Robert J. Scott
Commissioner, 4th District
Committee: Public Safety
302-505-0198



Hon. Jody Sweeny
Commissioner, 5th District
Committee: Community Services
302-943-7328



Hon. Paul Hertz
Commissioner, 6th District
Committee: Public Works
302-505-2310



Hon. Terry Pepper
Commissioner, At-Large
Committee: Finance
302-697-9194

About the Row Offices

Kent County has four Row Officers: each of which is an elected official. Row Officers serve four year terms and each is empowered to manage their office. Each row office performs a distinct function within the County Government. Row Officers are held accountable to the electorate and it is customary to refer to them with the designation of Honorable. These offices

REGISTER OF WILLS:

Hon. Douglas "DJ" Cox
douglas.cox@kentcountyde.gov
302-744-2330

Chief Deputy - Aleyshia Young

aleyshia.young@kentcountyde.gov
302-744-2330

RECORDER OF DEEDS:

Hon. Eugenia Thornton
eugenia.thornton@kentcountyde.gov
302-744-2321

Deputy - Joel Gartner

joel.gartner@kentcountyde.gov
302-744-2318

CLERK OF THE PEACE:

Hon. Brenda Wootten
brenda.wootten@kentcountyde.gov
302-744-2346

Deputy - Patricia A. Brown

trish.brown@kentcountyde.gov
302-744-2347

SHERIFF:

Hon. Norman Barlow
norman.barlow@kentcountyde.gov
302-744-2161

Chief Deputy - Robert Daddio

robert.daddio@kentcountyde.gov
302-736-2161

Kent County **PHONE DIRECTORY**

Kent County Administrative Complex

555 Bay Road Dover, DE 19901

Levy Court	302-744-2305
Assessment Office	302-744-2401
Building Permits & Inspections	302-744-2451
Code Enforcement	302-744-2452
Community Development	302-744-2480
Economic Development	302-678-3028
Engineering	302-744-2430
Facilities Management	302-744-2357
Finance	302-744-2386
Tax Section	302-744-2341
GIS/Mapping	302-744-2416
Information Technology	302-744-2365
Parks & Recreation	302-744-2495
Personnel	302-744-2310
Planning	302-744-2471

Kent County Emergency Services Building

**911 Public Safety Boulevard
Dover, DE 19901**

Emergency Communications	302-735-2200
Emergency Management	302-735-3465
Emergency Medical Services	302-735-2180

Kent County Library 497 South Red Haven Lane Dover, DE 19904

Library Services	302-744-1919
------------------	--------------

Kent County Parks and Recreation

**1683 New Burton Road
Dover, DE 19904**

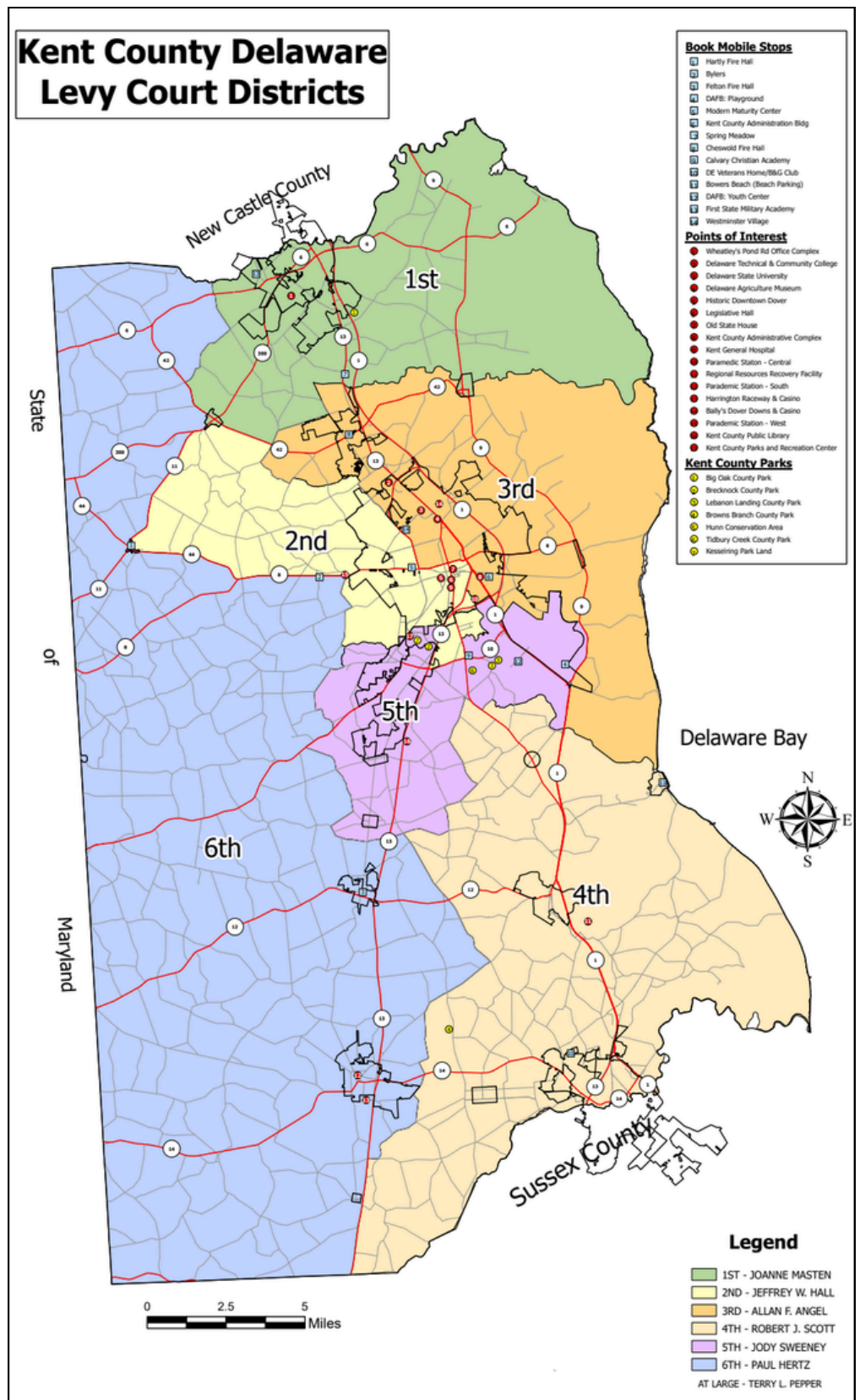
Recreation Center	302-744-2495
-------------------	--------------

Kent County Wastewater Treatment Plant

**139 Milford Neck Road
Milford, DE 19963**

Wastewater Facilities	302-335-6000
-----------------------	--------------

Kent County Delaware Levy Court Districts



Beyond the Flames: The critical Role of Code Enforcement Officers After a House Fire

By Shana Reed



Stock photo from claimsmate.blogspot.com

When a fire damages your home, the immediate response is swift and visible—firefighters extinguish the flames, and the fire marshal begins investigating the cause. But after the smoke clears and the fire trucks depart, another key group quietly steps in to help: code enforcement officers.

Often overlooked, code enforcement officers play a crucial role within the first 24 to 48 hours following a disaster, such as a flood, tornado, or a residential fire. While their job typically focuses on ensuring structures meet building and safety codes, during a crisis, their mission shifts to protecting lives, preserving property, and preventing further loss.

Shortly after a fire, code enforcement officers assess whether the building is safe to enter or occupy. They look for structural hazards like unstable walls, collapsing roofs, or exposed wiring. If dangers are found, they may issue emergency notices to restrict access and recommend measures to secure the site—such as boarding, fencing, or temporary stabilization. These actions not only protect the homeowner and neighbors from harm but also help prevent further damage or liability.

When emotions are high and decisions feel overwhelming, code enforcement officers can also offer practical guidance. They help homeowners understand what areas of the structure, if any, are safe to access to retrieve belongings. They also explain the next steps for safely securing the property and navigating local requirements for cleanup or temporary repairs.

This early involvement can make all the difference. Improper or premature cleanup efforts, though well-intentioned, may lead to violations or compromise future rebuilding plans. Working with code enforcement from the start ensures everything is done safely and by the book, which can speed up the path to recovery.

Many homeowners don't realize that some insurance policies include "ordinance or law" coverage—provisions that help pay for code-mandated upgrades when rebuilding. Having a code enforcement officer document what's required upfront can help activate this kind of support.

Check with your local municipality, as it may differ by town or city to find out who has jurisdiction over code enforcement in your area. To contact Kent County Division of Inspections and Enforcement call (302) 744-2451 or visit www.kentcountyde.gov.

The days after a fire are often the most vulnerable, but you don't have to navigate them alone. Code enforcement officers are here to protect more than just property—they're here to help you begin the process of rebuilding safely, securely, and with the support you need.

Kent County Department of Public Safety Hosts 3rd Annual Cardiac Arrest Survivors' Ceremony

By Greg Schulties

The Kent County Department of Public Safety (KCDPS) hosted its 3rd Annual Cardiac Arrest Survivors' Ceremony on Wednesday, May 21, 2025, at the Bayhealth Conference Center in Dover. Held annually during National EMS Week, this heartwarming event reunites cardiac arrest survivors with the bystanders and first responders who played a vital role in saving their lives.

More than 200 attendees—including survivors, loved ones, bystanders, first responders, local dignitaries, and community members—gathered to recognize the extraordinary efforts behind each life saved. This year, six survivors from calendar year 2024 were present to share their powerful stories and to personally thank those who intervened in their time of need.

One especially emotional story featured a survivor whose granddaughter courageously performed CPR after she suffered two separate cardiac arrests. Her quick thinking and calm response before first responders arrived were instrumental in saving her grandmother's life. Stories like this underscore the importance of CPR training for all ages and demonstrate the extraordinary impact bystanders can have in the most critical moments.

Kent Count Division of Emergency Medical Services (KCEMS) continues to emphasize the importance of CPR education and public preparedness, encouraging more residents to gain life-saving skills and help increase survival rates across Kent County.

"It's a privilege to host this ceremony and witness these meaningful reunions between survivors and the people who gave them a second chance," said Captain Greg Schulties of KCEMS. "We are committed to empowering our community with the training and confidence to act when seconds matter—because every life saved is a story worth celebrating."

Preparations are already underway for the 4th Annual Cardiac Arrest Survivors' Ceremony, scheduled for May 2026.



(Back Row, Left to Right) Yaeger Oaks, Kelli Brothers, Frederick Schaber, Michael Clarke, Chris Colpo; (Front Row, Left to Right) Veronica Dickerson, Wilbert Sherman (Survivor), Frank Fitzgerald



(Back Row, Left to Right) William Jester, Courtney Masche, Scott Thorne; (Front Row, Left to Right) Dirk Yoder, Rachel Johnson, Joshua Smith (Survivor), Fred Wyatt III



(Back Row, Left to Right) Courtney Masche, Brandon Shockley, Matt Donnelly, Ebbie Neal; (Front Row) Avyn Fuhr (Survivor) and Family



(Back Row, Left to Right) Ryan Deputy, Kevin Sipple, Matt Toothman; (Middle Row, Left to Right) Brandon Shockley, Andee Lauritsen, James Wilson, Janiyah Robinson, Veronica Dickerson, William Jester; (Front and Center) Cecelia Lofland (Survivor)



(Left to Right) Frederick Schaber, Timothy Wright (Survivor), Frank Fitzgerald



(Back Row, Left to Right) Ryan Deputy, Damian David; (Middle Row, Left to Right) Orlando Pritchett, James Wilson, Janiyah Robinson, Kevin Sipple; (Front and Center) Cecelia Lofland (Survivor)



(Back Row, Left to Right) Mikell Helmer, Robert Garnica; (Middle Row, Left to Right) Ashleigh Veney, Dirk Yoder, Kaitlyn Marvin; (Front and Center) Daniel Forsee (Survivor)

Spotlight on Extraordinary Stories in Kent County Levy Court

By Annette Whitby

I started my weight loss journey on May 11, 2023. On that morning, I was headed in for my 4th hernia surgery (all due to gaining and losing significant weight throughout the years). I knew after stepping on the scale in pre-op and seeing that my weight had skyrocketed to over 300 pounds, I had to do something. So, after a long recovery I started what is called the Optavia diet weighing 315 pounds I not only stuck to this very strict diet, but I walked or exercised daily. After 2 months of being on this very stringent diet I had lost nearly 40 pounds but knew that this was not a diet that I could stick to for the rest of my life, it was far too strict and very expensive. So, I talked to my Primary Care Provider (PCP) about other options. Having weight loss surgery was out of the question because I had done that 22 years prior and lost 100 pounds but gained it all back plus some. My PCP did a lot of blood work and found I was Pre-Diabetic. She then prescribed Mounjaro to treat my pre-diabetes and assist with weight loss. This medication was what I called a "Magic Shot". I no longer felt hungry all the time, I rarely thought about eating,



most days I didn't even realize I hadn't eaten until it was time to sit down as a family and eat dinner. I stuck to walking daily and eventually joined a gym; and before I knew it, I was making my goals. 1st goal was to lose 100 lbs, 2nd goal was to weigh under 200 lbs (Onederland felt fabulous,) and my 3rd goal was to weigh 160 pounds It took 18 months, but I did it!!!!!! I lost 160 pounds!!!! Not only did I reach my goal weight I passed it and now weigh 155 pounds I literally lost a whole me ;-) I rewarded myself this past December 2024 with a little cosmetic surgery to do away with the skin that was stretched and deflated after years of abuse. I am happier and healthier than I have been in many, many years.



My son Chris, who also works for the County as a 911 Dispatcher, was also diagnosed with prediabetes months before I was. He was also prescribed Mounjaro and lost significant weight and lowered his A1C.

There are so many others that just work for the County in Public Safety that are also taking Mounjaro or some kind of GLP1 Medication. It's amazing to walk down our halls and see how some of us have changed and how much weight we have lost over the past 2 years.

Fall Holiday Closures and Trash Collection Services

Veterans Day	Tuesday, November 11, 2025	Trash Services not impacted
Thanksgiving Day	Thursday, November 27, 2025 Friday, November 28, 2025	Trash Services, One Day Later, Thursday & Friday Customers

Kent County Welcomes Segundo "Sam" Bautista as Director of Public Works



After an extensive national search, Kent County is excited to introduce Segundo "Sam" Bautista as the new Director of Public Works, bringing a wealth of experience and expertise to our community.

Sam joins us from Daly City, San Mateo County, California, where he most recently served as the Director of Engineering and Public Works for the City of Millbrae. With more than 20 years of experience in civil and municipal engineering, he is a licensed Civil Professional Engineer in California, Washington, and Delaware. His strong academic foundation includes a bachelor's degree in biomedical engineering from the University of Southern California (USC), and he remains actively engaged in the professional community as a member of the American Society of Civil Engineers and the American Public Works Association, as well as serving on a board for the USC Alumni Association.

Throughout his career, Sam has successfully led a variety of Public Works projects, managing critical infrastructure improvements in streets, traffic and transportation, stormwater, water, parks, facilities, environmental programs, and wastewater systems. His portfolio includes major upgrades such as the Water Pollution Control Plant for the City of Millbrae, the Water Quality Control Plant for the City of South San Francisco, and SCADA system enhancements for water and wastewater infrastructure in Millbrae. His expertise also extends to the construction of parking structures, parks, and community centers, demonstrating his commitment to fostering strong, sustainable communities. Beyond his professional accomplishments, Sam has a passion for travel, having explored 86 countries, with Azerbaijan as his most recent destination.

We are thrilled to welcome Sam to Kent County and look forward to the leadership, innovation, and dedication he will bring to the Public Works Department and our community.

Kent County Welcomes Valerie Rocha as Deputy Register of Wills



Pictured from left: City of Dover Councilman, Gerald L. Rocha, Sr., Deputy Register of Wills Valerie L. Rocha, and Registrar of Wills, the Honorable DJ Cox

Kent County is pleased to welcome Valerie Rocha as the new Deputy Register of Wills, bringing a wealth of experience in government, legal administration, and community engagement to her role.

Originally from Long Island, New York, Valerie relocated to Delaware in 2017, embracing new opportunities while continuing her impactful career in public service and legal affairs. With 15 years of experience as a Community Liaison for the Southampton Town Board and Town Highway Superintendent, Valerie played a crucial role in facilitating communication, policy initiatives, and community outreach.

Her legal expertise further expanded in Delaware, where she worked as a Legal Assistant for both the New Castle County Prosecutor's Office and Ward & Taylor, LLC, strengthening her knowledge in legal procedures and case management. Currently, Valerie is pursuing a Bachelor of Science in Legal Studies at Wilmington University, demonstrating her commitment to continuous learning and professional growth.

Beyond her career, Valerie values family above all. She and her husband, Gerald, share a wonderful life together, raising four children and cherishing their five grandchildren.

Kent County is excited to have Valerie on board and looks forward to the expertise, leadership, and dedication she brings to the Register of Wills Office. Please join us in welcoming Valerie to our team!

Employees of the Month

Lisa Spence-Russ



The Kent County Department Heads have proudly selected Lisa Spence-Russ from the Department of Finance – Finance Office as the April 2025 Employee of the Month, honoring her unwavering dedication, professionalism, and commitment to excellence.

Lisa, an Accountant II, joined the County team in May 2022 as an Accountant I and quickly

distinguished herself through her meticulous attention to detail and eagerness to learn. Her well-earned promotion to Accountant II in November 2024 is a testament to her hard work and drive.

With over three decades of experience in Accounting and Finance—including 31 years of service with the State of Delaware before retiring in 2016—Lisa brings a wealth of knowledge to her current role. She plays a vital part in financial operations, handling key responsibilities such as preparing general ledger journal entries, reconciling bank accounts, reviewing purchase requests, and managing purchase orders. Lisa's dedication goes beyond her day-to-day duties, as she willingly takes on special projects that contribute to the overall

efficiency of the Finance Office.

Finance Director Susan Durham spoke highly of Lisa's contributions, saying: "Lisa truly embodies the essence of teamwork. Her desire to learn and grow is evident in her keenness to ask questions and continuously refine her skills. She is not only a dedicated and detail-oriented professional but also a caring and supportive team member. Her unwavering commitment to excellence, along with her genuine care for her colleagues, has a meaningful impact on the Finance Office and the County as a whole. Her dedication and outstanding contributions make her a truly deserving candidate for Employee of the Month."

Lisa's exceptional work ethic, passion for her craft, and steadfast commitment to her team make her an invaluable asset to the County. Her colleagues appreciate not only her expertise but also her kindness and support.

Congratulations, Lisa, on this well-deserved recognition! The County thanks you for your hard work and dedication.

April

Aaron Andrews



The Kent County Department Heads proudly recognize Aaron Andrews from the Department of Public Works – Engineering Office as the May 2025 Employee of the Month, celebrating his innovation, dedication, and team spirit.

Aaron joined Kent County in August 2023 as a GIS Technician I, and his technical expertise

Aaron joined Kent County in August 2023 as a

GIS Technician I, and his technical expertise and forward-thinking approach quickly made a positive impact within the department. His outstanding contributions led to his well-earned promotion to GIS Technician II in March 2024.

In his current role, Aaron is responsible for drafting essential County projects, including district boundary lines, utility pumping stations, roadways, light poles, and other infrastructure. He also revises and digitizes County utility maps and plans to ensure accuracy and efficiency.

Beyond his technical drafting work, Aaron has distinguished himself through innovation and problem-solving. He developed a custom

application using ESRI tools to track trash-related issues and complaints, manage replacements and repairs, and improve communication between staff and contracted haulers.

His solution significantly streamlined operations, reducing reliance on email and Excel spreadsheets, and demonstrating his ability to transform challenges into efficient processes.

Acting Director of Public Works Diana Golt praised Aaron's contributions, stating: *"Beyond his technical contributions, Aaron boosts office morale by organizing fun events like Floral Friday and Flannel Friday throughout the year. With his friendly demeanor, team spirit, and willingness to help, Aaron is a valued asset to the Public Works Department. His innovative ideas continue to make a positive impact every day."*

Aaron's dedication, creativity, and enthusiasm make him a standout member of the County team. His colleagues appreciate both his expertise and the positive energy he brings to the workplace.

Congratulations, Aaron, on this well-deserved honor! The County is grateful for your hard work and innovative contributions.

May

Amy Brannon



The Kent County Department Heads are proud to recognize Amy Brannen from the Register of Wills Office as the June 2025 Employee of the Month, celebrating her dedication, professionalism, and positive impact on the County.

Amy joined the Register of Wills Office in February 2024 as a Wills Clerk I, bringing a strong background in administrative and

office management. Her exceptional work ethic and commitment to excellence earned her a well-deserved promotion to Wills Clerk II in August 2024.

In her current role, Amy is responsible for reviewing estate inventories, processing estate claims, and ensuring compliance with inventory requirements for probated estates. She also examines wills for real estate and asset transfers, prepares and indexes records for archiving, and assists the public through research and correspondence with legal representatives and court personnel. Her dedication to accuracy and efficiency helps ensure that filings are processed smoothly and correctly.

Beyond her technical expertise, Amy stands out for her exceptional customer service and enthusiastic approach to her work. She has mastered multiple roles within the office, often taking initiative to understand processes beyond her primary duties. Her eagerness to learn and grow makes her a valuable asset to her team.

Kent County Registrar of Wills DJ Cox praised Amy's impact on the office, stating: "Amy approaches each day with a friendly, upbeat attitude that uplifts everyone around her. Whether engaging with the public, assisting coworkers, or managing her daily responsibilities, she consistently brings a smile and a calm, reassuring presence to every situation. Her dedication and positive energy leave a lasting impression each day."

Amy's commitment to excellence, teamwork, and public service make her a truly deserving recipient of this recognition. Her colleagues appreciate not only her professionalism and expertise but also her warm, supportive presence.

Congratulations, Amy, on this well-earned honor! The County sincerely thanks you for your dedication and hard work.

June

Kent County Parks & Recreation



Fall 2025



ACTIVITY GUIDE

Division of Parks & Recreation

Serving Kent County with Pride

ARTS & CRAFTS

ACRYLIC PAINTING FOR ADULTS

Ages: 16+ Fee: \$80
Session: Oct 9 - 30 AC#: APFA109
Days: Thursdays Times: 6-8pm

The Dover Art League, 21 W. Loockerman St., Dover

Although color and light may appear daunting, understanding color theory can demystify the process. In this class, students will get the opportunity to learn how color theory works in a practical way that will serve them immensely as they create three beautiful landscapes and one still life with step-by-step instruction. Along the way, students will get to practice clouds, trees, gradations, and shadows. They will also get to learn how to make a sun glow, how to create the illusion of sunlight, and how to sculpt an object using two contrasting light sources. All materials will be provided. Instructor: Helen Hogan

ART 101 FOR HOMESCHOOLERS

Ages: 7-13 Fee: \$90
Session: Sept 24 - Oct 22 AC#: ART101HS924
Days: Wednesdays Times: 11am-1pm

The Dover Art League, 21 W. Loockerman St., Dover

Designed specifically for homeschoolers, this dynamic art class invites students to explore their creativity through a variety of hands-on projects. Over the course of the class, young artists will dive into different materials such as paint, clay, and mosaics, discovering new techniques and finding their unique artistic voice. From the vibrant colors of paint to the tactile experience of clay, students will work with a wide range of materials to bring their ideas to life. This class is all about trying new things, encouraging students to explore different styles and methods as they uncover what excites them most about art. By the end of the course, students will have a portfolio of creative projects, each one reflecting their personal journey in art. This class is perfect for homeschoolers eager to add more creativity and fun to their learning experience! *All materials provided. Instructor: Rebecca Walsen.

BEGINNER AND ADVANCED CROCHET OR KNITTING DESIGN

Ages: 13+ Fee: \$65
Session 1: Oct 7 - 21 AC#: CROKNI107
Session 2: Nov 18 - Dec 2 AC#: CROKNI1118
Days: Tuesdays Times: 5:30pm-7:30pm

***Kent County Administrative Complex, Room 126A,
555 Bay Rd., Dover***

The beginner class will learn how to make a scarf and potholders, participants will keep all projects made. The advanced class will learn how to make their own projects. (Please indicate on registration form whether you are a crocheter or knitter, beginner or advanced). Parents must stay if registrant is under 18. Instructor: Manh Nguyen, with over 40 years of teaching experience. For a list of class supplies (supplies not included), please call Manh at 302-530-9525.



BEGINNER STAINED GLASS

Ages: 16+ Fee: \$150
Session 1: Oct 22 - Nov 26 AC#: BSG1022
Days: Wednesdays Times: 10am-12:30pm

Session 2: Oct 25 - Nov 29 AC#: BSG1025M
Days: Saturdays Times: 10am-12:30pm

Session 3: Oct 25 - Nov 29 AC#: BSG1025E
Days: Saturdays Times: 1pm-3:30pm

The Dover Art League, 21 W. Loockerman St., Dover

In this Beginner Stained Glass Class, you'll dive into the beautiful art of stained glass and create your own stunning project from start to finish! Learn essential skills like glass cutting, pattern making, grinding, and project layout. Students will also master foiling, soldering, cleaning, polishing, and applying patina to give your piece a professional finish. By the end of the course, every student will leave with a completed stained glass creation to proudly display. No experience necessary—just bring your creativity and get ready to shine! *All materials included. Instructor: Cathy Batista.

COZY CREATIONS: A CERAMIC WORKSHOP

Ages: 16+ Fee: \$70
Session 1: Oct 3 & 17 AC#: CCACW1003
Days: Fridays Times: 5:00pm-8:00pm

The Dover Art League, 21 W. Loockerman St., Dover

In this beginner-friendly ceramics class, students will design and create a functional candle warmer using slab-building techniques. Through guided instruction, participants will learn how to shape, join, and refine clay into a form that safely holds heat while showcasing their personal style. The class also explores surface decoration methods such as carving, texturing, and cutouts, followed by glazing and kiln firing. Each student will leave with a custom, handcrafted ceramic candle warmer ready for use. * All materials included. Instructor: Jaisri Davis



DRAWING WHAT YOU SEE

Ages: 16+ Fee: \$75
Session: Oct 7 - 28 AC#: DWYS107
Days: Tuesdays Times: 6-8pm

The Dover Art League, 21 W. Loockerman St., Dover

Are you frustrated with drawing because it never seems to look like what you see in front of you? Learning to observe before you draw is key! This class will train your eyes to see objects the way an artist needs to see them. We will progress through a series of exercises using grids, viewfinders, and pencil measuring to practice rendering objects accurately. These objects will include a profile, an eye, a still life, a hand, and a chair, which we will draw in pencil. In addition, we will learn about and practice light and shadow using still-life objects. By the end of class, you should have the tools you need to practice drawing what you see accurately. All materials will be provided. Instructor: Helen Hogan

MAGICAL ART ADVENTURE: INSPIRED BY HARRY POTTER

Ages: 7-13 Fee: \$90
Session: Oct 10 - Nov 14 AC#: MAA1010
Days: Fri Times: 11am-1pm

The Dover Art League, 21 W. Loockerman St., Dover

Step into the enchanting world of Harry Potter where each week, art projects are woven with the magic of the beloved book series. This art class was designed for homeschoolers who want to add more creativity to their practice. Whether a child is reading the first book or the last, every activity connects to the enchanting universe of Harry Potter. Create your own origami owls, sketch and color the majestic Hogwarts, craft and decorate paper mache wands, paint a terrarium inspired by magical plants, and write potions with a quill pen! Join us for a spellbinding journey through art and magic! All materials will be provided. Instructor: Jake Golden

PHOTOGRAPHY FOR BEGINNERS

Ages: 16+ Fee: \$100
Session: Nov 2 - Dec 7 AC#: PFB112
Days: Sun Times: 10am-12pm

The Dover Art League, 21 W. Loockerman St., Dover

Do you have a camera, but still use the auto settings? Do you want maximum control over your images to achieve exactly what you envision? Then this class is for you! In this 6-week course, students will learn the basics of photography including: exposure, aperture, shutter speed, basic editing, and more! Students will have the opportunity during class hours to get outside and practice the techniques they learn. All you need is a DSLR camera and a notebook! The editing portion will be taught via a projector, but students can bring their own laptop if they'd like. Instructor: Jarred Knorr.



POTTERY FOR KIDS

Ages: 10+ Fee: \$80
Session: Oct 1 - 22 AC#: PFK101
Days: Wed Times: 5:30pm-7:30pm

The Dover Art League, 21 W. Loockerman St., Dover

Join us for a fun and creative four-week pottery class where young artists will learn the basics of slab building! In this hands-on course, students will learn the foundational techniques needed to create their own unique clay masterpieces. Each week, they'll explore different projects, including crafting a tile, slab vase, slab bowl, and an abstract slab sculpture. Students will get familiar with slab building techniques, shaping and assembling clay to form their creations. They'll practice using various pottery tools and learn to apply sgraffito designs, a technique where they'll carve into the clay surface to reveal contrasting layers. Students will gain an understanding of the clay drying stages and the glazing process, adding color and shine to their final pieces. By the end of the course, each child will have a collection of beautifully crafted pottery pieces to take home, showcasing their creativity and newfound skills. This class is perfect for kids who love to get their hands dirty and explore the endless possibilities of clay. *All materials provided. Instructor: Charlese Phillips.

SEWING MADE EASY AND FUN

Ages: 13+ Fee: \$65
Session 1: Oct 6 - 20 AC#: SEW1006
Session 2: Nov 17 - Dec 1 AC#: SEW1117
Days: Mondays Times: 5:30pm-7:30pm

Kent County Administrative Complex, Room 126A, 555 Bay Rd., Dover

Participants will learn sewing machines basics: operation, connect fabric, sew on a button and make a buttonhole (if your machine has one). The class will also cover how to hem a skirt, pants, shorts, dress, tunnel elastic, make a tie belt and repair a garment (supplies not included). Participants will need to bring their machine and instruction manual. Parents must stay if registrant is under 18. Instructor; Manh Nguyen with over 40 years of teaching experience. For a list of class supplies (supplies not included), please call Manh at 302- 530-9525.

THE BASICS OF CREATIVE DRAWING

Ages: 5-8 Fee: \$55
Session: Oct 6 - 20 AC#: BOCD106
Days: Mondays Times: 6-8pm

The Dover Art League, 21 W. Loockerman St., Dover

Let your little artist's imagination run wild in this fun and creative drawing class for ages 5-8! We'll explore shapes, lines, and colors while learning how to turn simple doodles into awesome characters, animals, and scenes. With plenty of encouragement and easy-to-follow steps, kids will build confidence and have a blast bringing their ideas to life on paper *All materials provided. Instructor: Kevin Solomon.

FITNESS

AQUA AEROBICS CARDIO BLAST

Ages: 18+ Fee: \$75
Session 1: Sept 9 - Oct 16 AC#: FMMCAQ909
Session 2: Oct 21 - Nov 20 AC#: FMMCAQ1021
Days: Tuesdays, Thursdays Times: 6pm-7pm

Modern Maturity Center, 1121 Forest Ave., Dover

Take advantage of water's natural resistance to get an aerobic and toning workout without the wear and tear on your joints. This program focuses on cardiovascular fitness and range of motion and is a great workout for seniors. Participants must bring their suit and towel. (Note: You do not need to know how to swim.) Instructor: Betsy Gustafson, personal trainer and fitness instructor with 30+ years of experience.

RHYTHM RIDE INDOOR CYCLING

Ages: 16+ Fee: \$75
Session 1: Sept 2 - Oct 9 AC#: RRIC902
Session 2: Oct 21 - Dec 4 AC#: RRIC1021
No class Nov 11 or 25
Days: Tuesdays, Thursdays Times: 7:15pm-8:00pm

Lett's Spin Indoor Cycling, 1231 S. DuPont Blvd, Suite 102., Smyrna

This mid to high-energy indoor cycling class, led by a motivating instructor, blends beat-based choreography, resistance drills, and full-body movement for a ride that's as fun as it is fierce. Expect climbs, sprints, tap backs, corners, and upper-body flow all synced to a fire playlist that keeps your heart pumping and your spirit lifted. Perfect for all fitness levels.



VIRTUAL BODY TONING

Ages: 16+ Fee: \$60
Session 1: Sept 3 - Nov 3 AC#: BTONE903
Session 2: Nov 5 - Dec 17 AC#: BTONE115
Days: Mondays, Wednesdays Times: 5:30pm-6:30pm

Online Classes, Zoom link provided for each class

This class concentrates on those trouble areas (thighs, hips, and abdomen), as well as firming up the upper body (arms, back, shoulders, and chest). Participants will need a mat and two 1 to 5 lb. hand weights. Instructor: Kathy Kennedy-Ratajack.



VIRTUAL YOGA

Ages: 16+ Fee: \$40
Session 1: Sept 3 - Nov 3 AC#: BTONE903
Session 2: Nov 5 - Dec 17 AC#: BTONE115
Days: Mondays, Wednesdays Times: 6:35pm-7:05pm

Online Classes, Zoom link provided for each class

Yoga begins with simple breathing exercises and stretches intended to clear the mind as well as open up the lungs. Most people beginning yoga will experience measurable progress in their strength and flexibility after a week or two of daily practice. Clothing should be comfortable to allow free movement. Participants must have a yoga sticky mat. Instructor: Kathy Kennedy-Ratajack.

ZUMBA GOLD PLUS

Ages: 18+ Fee: \$65
Session 1: Sept 9 - Oct 16 AC#: FZGP909
Session 2: Oct 28 - Dec 11 AC#: FZGP1028
Days: Tuesdays, Thursdays Times: 5pm-6pm

Kent County Recreation Center, 1683 New Burton Rd., Dover

Come join this fun and easy to follow Zumba class. This version of Zumba allows you to dance at your own pace. Incorporates verbal instruction in addition to hand cueing to further assist in the teaching process. This is a low impact dance party where you choose the intensity you want. You will groove to Latin, R&B, Oldies, Big Band, Rock, Dance Hall, Pop, and more. There is something for everyone and every fitness level. This is a no judgement zone, with tons of fun! Hope to see you there! Instructor: Denise Jackson (Niecy J). Min 10, Max 25.

Please call 302-744-2486 for Under 16yrs Registration

MUSIC/DANCE

ENGLISH COUNTRY DANCING

Ages: 12+ Fee: \$50
Session 1: Sept 8 - Oct 20 AC#: ECD908
Session 2: Nov 3 - Dec 15 AC#: ECD1103
Days: Mondays Times: 2:30pm-4pm

Kent County Recreation Center, 1683 New Burton Rd., Dover

Skip a trip to the gym and try folk dancing for exercise! This class is designed for beginners, however experienced dancers are welcome to join. New steps and new dances will be taught each week. The class moves at the pace of the students. Singles and couples are welcome. All dances are taught and "called" by the instructor. Sneakers or flat, non-marking soles are best. English Country Dancing is seen in Colonial Williamsburg and the Jane Austen movies. This class is fun, easy and lightly aerobic. Great for homeschoolers! Great for seniors, too! Instructor: Jackie McCabe.

KCRC SOUL LINE DANCE

Ages: 16+ Fee: \$41
Session 1: Oct 14 - Nov 18 AC#: KCRCSLD1014
Session 2: Nov 25 - Dec 23 AC#: KCRCSLD1125
Days: Tuesdays Times: 6:30pm-7:30pm

Kent County Recreation Center, 1683 New Burton Rd., Dover

Looking for a great way to burn calories, meet new people, and improve your coordination while enhancing your dance moves? Look no further; Soul Line Dancing is for you. Come out and join the fun at our beginner level classes as you learn popular dances such as the Electric Slide, Wobble, Cupid Shuffle, Uptown Funk, and many more. Instructors: Chuck & Kelly Cooper. Chuck & Kelly Cooper of C & K Soul Line Dancing will meet you in Boys & Girls Club Conference Center when you enter on the right.

SPORT INSTRUCTION

TOT INSTRUCTIONAL BASKETBALL

Ages: 4-7 Fee: \$45
Session 1: Sept 6 - Oct 4 AC#: TBASKLG906
Days: Saturdays Times: 10:30am-11:30am

Kent County Recreation Center, 1683 New Burton Rd., Dover

Introduce your little ones to the fundamentals of basketball in a fun and engaging environment! Our Tot Instructional Basketball program is designed for young children to develop basic basketball skills, coordination and teamwork. Players will be introduced to fundamental skills like dribbling, passing and shooting through fun drills and activities that build confidence and motor skills. The main goal is to have fun!

TOT MULTI SPORT CLASS

Ages: 4-7 Fee: \$55
Session 1: Sept 18 - Oct 23 AC#: TRCTMS918
Days: Thursdays Times: 4pm-5pm

Kent County Recreation Center, 1683 New Burton Rd., Dover

This class is a great introduction to a variety of sports for emerging athletes. This class will teach fundamentals on how to play various sports and how to play with others. A variety of sports will be covered including: Soccer, Football, Baseball, Hockey, Volleyball, Basketball, etc. If you have any questions about registering, please call Parks & Recreation at 302-744-2486 or email at joseph.paugh@kentcountyde.gov

TOT & PARENT MULTI SPORT CLASS

Ages: 2-5 Fee: \$55
Session 1: Sept 18 - Oct 23 AC#: TRCPTM918
Days: Thursdays Times: 3pm-4pm

Kent County Recreation Center, 1683 New Burton Rd., Dover

This is a parent and child class that is a great introduction to a variety of sports for both parents and their emerging athletes. Parents will work with their child to develop skills and a love for sports. This class will cover a variety of sports including Soccer, Football, Baseball, Hockey, Volleyball, Basketball, etc. If you have any questions about registering, please call Parks & Recreation at 302-744-2486 or email at joseph.paugh@kentcountyde.gov

ADVANCE PICKLEBALL

Ages: 16+ Fee: \$55
Session 1: Sept 2 - 23 AC#: PICKADV902
Session 2: Oct 7 - 28 AC#: PICKADV1007
Session 3: Nov 4 - Dec 2 AC#: PICKADV1104
Days: Tuesdays Times: 12pm-1:30pm

Kent County Recreation Center, 1683 New Burton Rd., Dover

Are you ready to take your pickleball game to the next level? This course will cover intermediate-to-advanced pickleball skills such as: dinking, volleying, third shot drop, reset, lob, defend lob. Tactics will be taught for doubles play: serve, return of serve, transition to non-volley zone, going on attack at the non-volley zone. Instructor: Lynn Price



BEGINNER PICKLEBALL

Ages: 16+ Fee: \$55
Session 1: Sept 2 - 23 AC#: PICKLBEG902
Session 2: Oct 7 - 28 AC#: PICKLBEG1007
Session 3: Nov 4 - Dec 2 AC#: PICKLBEG1104
Days: Tuesdays Times: 8am-9:30am

Kent County Recreation Center, 1683 New Burton Rd., Dover

This class is for beginners only. Pickleball is designed for all skill and age levels and is very easy to learn. Knowledge of the game is not necessary. Basic drills, skills and rules of the game will be taught. Our indoor courts will make your Pickleball experience much more memorable. Instructor: Lynn Price

INTERMEDIATE PICKLEBALL

Ages: 16+ Fee: \$55
Session 1: Sept 2 - 23 AC#: PICKLINT902
Session 2: Oct 7 - 28 AC#: PICKLINT1007
Session 3: Nov 4 - Dec 2 AC#: PICKINT1104
Days: Tuesdays Times: 10am-11:30am

Kent County Recreation Center, 1683 New Burton Rd., Dover

Some previous experience of Pickleball is necessary. This class is designed for individuals who want to expand their knowledge and skills of the game. Serving, positioning, lob shots, dinking are just some of the skills that will be taught during this class. Instructor: Lynn Price



SPORT LEAGUES

BOYS HIGH SCHOOL LACROSSE LEAGUE

Ages: 13-18 Fee: \$87
Session: Sept 7 - Oct 12 AC#: YBLAXLG907
Days: Sundays Times: 10am-11:30am

Kent County Recreation Center, Turf Field, 1683 New Burton Rd., Dover

This pick-up league is designed to develop fundamental skills and techniques that will help prepare your game at the next level. All players will be placed on teams by the Coaching staff and will compete in games over the 6-week time frame. Players need to provide their own equipment (helmet, mouthpiece, gloves, elbow/shoulder pads and stick). For more information, call Joseph Paugh at 302-744-2486.

HARRINGTON SOFTBALL LEAGUE

Ages: 18+ Fee: \$550
Upper Division AC#: HSBLG907U
Lower Division AC#: HSBLG907L
Session: Sept 7 - Oct 19
Days: Sundays Times: 9am-2pm

Browns Branch County Park, 1415 Killens Pond Rd., Harrington

6-week regular season, 12 games with single-elimination tournament to end the league. Lower division D and E ranked players; upper division open to all players. Minimum of 3 girls per game. League is USSA governed. For more information, contact Brent Molloyhan at 302-744-2491 or email at brent.molloyhan@kentcountyde.gov

INDOOR BOYS HIGH SCHOOL LACROSSE LEAGUE

Ages: 13-18 Fee: \$60
Session: Nov 20 - Dec 18 AC#: BLAXLG1120
Days: Thursdays Times: 7pm-9pm

Kent County Recreation Center, 1683 New Burton Rd., Dover

This pick-up league is designed to develop fundamental skills and techniques that will help prepare your game at the next level. All players will be placed on teams by the Coaching staff and will compete in games. Players need to provide their own equipment (helmet, mouthpiece, gloves, elbow/shoulder pads and stick). NO SPIKES or CLEATS!

INDOOR YOUTH LACROSSE LEAGUE

Ages: 7-13 Fee: \$60
Session: Nov 20 - Dec 18 AC#: BLAXLG1120
Days: Thursdays Times: 5:45pm-7pm

Kent County Recreation Center, 1683 New Burton Rd., Dover

This pick-up league is designed to develop fundamental skills and techniques that will help prepare your game at the next level. All players will be placed on teams by the Coaching staff and will compete in games. Players need to provide their own equipment (helmet, mouthpiece, gloves, elbow/shoulder pads and stick). NO SPIKES or CLEATS!



Kent County Parks & Recreation

JR. NBA BASKETBALL LEAGUE

SEASON BEGINS OCTOBER 2025



REGISTER TODAY!



For More Information or to Register:
Call: 302-744-2495 www.secure.rec1.com/DE/kent-county-de/catalog Email: ParksRec@kentcountyde.gov



The JR. NBA, NBA, And NBA properties inc. do not in any way control or operate the activities of any organization team

Rookie Division

Ages: 7-8 Fee: \$80
Session: Oct 14 - Nov 25 AC#: JRNBA25(7-8)
Days: Tuesdays Times: 6:30pm-7:45pm

Junior Division

Ages: 11-12 Fee: \$80
Session: Oct 1 - Nov 19 AC#: JRNBA25(11-12)
Days: Mondays, Wednesdays Times: 6pm-8:30pm

Youth Division

Ages: 9-10 Fee: \$80
Session: Oct 1 - Nov 19 AC#: JRNBA25(9-10)
Days: Mondays, Wednesdays Times: 6pm-8:30pm

Recreation Division

Ages: 13-16 Fee: \$80
Session: Oct 1 - Nov 19 AC#: JRNBA25(13-16)
Days: Mondays, Wednesdays Times: 6pm-8:30pm

ALL DIVISIONS ARE CO-ED.

Additional volunteer coaches and assistants are needed. If you are over 18 and would like to volunteer, please call the Recreation Office at 302-744-2495. (Background checks are required for all coaches and assistants and will be administered free of charge.)



Kent County Recreation Center, 1683 New Burton Rd., Dover

This league values diversity and inclusion at all levels and will strive to be a positive experience for its players, teams, and coaches. Players will be encouraged to play ethically, honestly, with fairness, hustle, and enthusiasm. We believe that hard work and playing to the best of one's ability is more important than the outcome of games.

Teams will play games one night a week and have practice on another. Rookie Division practices and plays on the same day. A full schedule of team practices and games will be distributed at the beginning of the league. The first week of the league will be a player showcase and practice night (Except Rookie division). Games will have two 20-minute halves with a running clock. Jr. NBA jerseys will be provided.



Photo by Jonathan Stewart

Kent County Parks & Recreation

KENT YOUTH SOCCER LEAGUE



REGISTER TODAY!



Season begins September 2025



Registration IS OPEN NOW!

<https://secure.rec1.com/DE/kent-county-de/catalog>

Phone: 302-744-2495

E-mail: KYSL@KentCountyDE.gov

EARLY BIRD DISCOUNTS AVAILABLE UNTIL AUG 17, 2025

U4-Tot & Parent

Ages: 2-3

Session: Sept 23 - Oct 21

Days: Tuesdays

Fee: \$40

AC#:

Times: 5pm-5:30pm

U6-CoEd

Ages: 4-6

Session: Sept 2 - Oct 25

Days: Tuesdays, Saturdays

Fee: \$70

AC#:

Times: 5:30pm-6:15pm

U8-CoEd

Ages: 6-8

Session: Sept 4 - Oct 25

Days: Thursdays, Saturdays

Fee: \$80

AC#:

Times: 5:30pm-6:15pm



Kent County Recreation Center, 1683 New Burton Rd., Dover

KYSL Fall 2025 Registration OPENS MONDAY 7/7/25. For more information about the league, visit our online information page: [CLICK HERE](#) Following registration, read over your receipt for further information. Teams will be made closer to the start of the season. Please be patient as we gather volunteer coaches, and if you would like to help, e-mail us at KYSL@KentCountyDE.gov.

Additional volunteer coaches and assistants are needed. If you are over 18 and would like to volunteer, please call the Recreation Office at 302-744-2495. (Background checks are required for all coaches and assistants and will be administered free of charge.)

U10-Girls & Boys

Ages: 8-10

Session: Sept 2 - Oct 25

Days: Tue, Thur, Sat

Fee: \$85

AC#:

Times: 12am-5:30pm

U12-Girls & Boys, U14-Girls & Boys, U19-Girls & Boys

Ages: 10-12

Session: Sept 2 - Nov 1

Days: Tue, Thur, Sat

Fee: \$105

AC#:

Times: 12am-5:30pm

Please Note:

U10, U12, U14 and U19 must purchase jersey kits from 'Eastern Shore Shirts & Signs'. Link to the jersey kit AND fan shop is provided on your receipt after registration.

*To receive your jerseys before the season starts you must order before August 17.



Kent County Parks & Recreation

FALL 2025 Season
Starts in September

NFL YOUTH FLAG FOOTBALL

TWO AGE DIVISIONS:

7-10yrs Division

11-14yrs Division



For More Information or to Register:
Call: 302-744-2495 www.secure.rec1.com/DE/kent-county-de/catalog mail: ParksRec@kentcountyde.gov



7-10 Division

Ages: 7-10

Fee: \$80

Session: Sept 19 – Nov 21

AC#: YNFL919A

Days: Wednesdays, Fridays

Times: 6pm–7pm

11-14 Division

Ages: 11-14

Fee: \$80

Session: Sept 19 – Nov 21

AC#: YNFLFL919B

Days: Wednesdays, Fridays

Times: 7pm–8pm

**Kent County Recreation Center, Turf Field, 1683 New
Burton Rd., Dover**

The largest flag football program in the nation offers a fun, non-contact football experience for boys and girls. This non-contact league emphasizes on throwing and catching. Parents or guardians are encouraged to volunteer as coaches and assistant coaches. If you are over 18 and would like volunteer, please call the Recreation Office. (Background checks are required for all coaches and assistant coaches and will be administered free of charge.) Fee includes jersey. For more information, call Joe Paugh at 302-744-2486 or email at joseph.paugh@kentcountyde.gov

**PLAYERS MUST PROVIDE THEIR OWN
MOUTH GUARD**



Photo by Joseph Paugh

All divisions are co-ed.

Additional volunteer coaches and assistants are needed. If you are over 18 and would like to volunteer, please call the Recreation Office at 302-744-2495. (Background checks are required for all coaches and assistants and will be administered free of charge.)



Photo by Joseph Paugh

PICKLEBALL LADDER LEAGUE

Ages: 18+ Fee: \$30
Session: Sept 9 – Oct 14 AC#: PBLEAG909
Days: Tuesdays Times: 6pm–8pm

Kent County Recreation Center, 1683 New Burton Rd., Dover

12 people are needed for league to operate. After 12 registrations, a waiting list will be added. Every 4th person then will be added to active roster. League will play 6 weeks. Basic understanding of Pickleball rules and game play is necessary. Trophies awarded to 1st and 2nd place finishers.

YOUTH LACROSSE LEAGUE

Ages: 8–13 Fee: \$87
Session: Sept 7 – Oct 12 AC#: YLAXLG907
Days: Sundays Times: 11:30am–1pm

Kent County Recreation Center, Turf Field, 1683 New Burton Rd., Dover

This pick-up league is designed to develop fundamental skills and techniques that will help prepare your game at the next level. All players will be placed on teams by the coaching staff and will compete in games over the 6-week time frame. Players need to provide their own equipment (helmet, mouthpiece, gloves, elbow/shoulder pads and stick). For more information, call Joseph Paugh at 302-744-2486.



Make a difference in youth sports

You can make a difference in your community — one game at a time! Kent County Parks & Recreation is looking for dedicated, positive, and energetic individuals to serve as volunteer coaches for our youth sports leagues.

Whether you're a seasoned athlete or simply passionate about helping kids grow, volunteer coaching is a rewarding way to give back.

We provide the tools, training, and support — you bring the enthusiasm and heart.

Ready to make an impact? Join our team of volunteers and help shape the next generation of athletes!



SCRAMBLE GOLF LEAGUE

Ages: 16+ Fee: \$80
Session: Sept 8 – Nov 3 AC#: SCRAMG908
Days: Mondays Times: 5pm–8pm

Jonathan's Landing Golf Course, 1309 Ponderosa Dr., Magnolia

Individuals who are interested in getting on a team should call the Recreation office. League will begin at 5:00 p.m. on Monday, September 8. Greens fees & cart will be \$27 per person/per week. The 12–15- week season ends with a scramble tournament and golf banquet. League is handicapped by Kent County Parks and Recreation.



Photo by Joseph Paugh

SPECIAL EVENTS



KCPR POWER-UP TOURNAMENT SERIES

Ages: 9+ Fee: \$10
Session 3: Dec 3 AC#: KCPU123
Session 4: Dec 17 AC#: KCPU1217
Days: Wednesday Times: 5:30pm–9pm

Kent County Recreation Center, 1683 New Burton Rd., Dover DE

Are you ready to level up your gaming experience? The Kent County Power-Up Tournament Series is here! Compete in high-energy Mario Kart tournaments on a massive 25-ft screen with an epic sound system that will bring every course, power-up and race to life! Register for either Mario Kart tournament (or both!) Game schedule will be released once registration closes. This is more than just a tournament — it's an electrifying, gaming event where skill, strategy, and fun collide! Do you have what it takes to Power-Up and claim victory? For more information call Joe Paugh or Jonathan Stewart at 302-744-2495 or check out <https://secure.rec1.com/catalog> for more information. Min 16, Max 32. (Console: Nintendo Switch / Game: Mario Kart 8 Deluxe)

Nintendo is not a sponsor or affiliated with this tournament. Terms for participating in and viewing Community Tournaments using Nintendo Games: https://en-americas-support.nintendo.com/app/answers/detail/a_id/6345

Children's Halloween

Fantasy Trail

Brecknock County Park

80 Old Camden Road, Camden

Saturday, October 11

11:00 a.m. – 1:00 p.m.

See Your Favorite
Cartoon & Storybook
Characters!

Fee is \$5
Per Person
Regardless of Age
CASH ONLY!



Ages: All Ages
Session: Oct 11
Days: Saturday

Fee: \$5 per person
AC#: 2025
Times: 11am-1pm

Brecknock County Park, 80 Old Camden Rd., Camden

Designed for children ages 2 to 7. Come with no tricks, but to receive treats at the end of the trail. You will enter the enchanted forest to begin your adventure. Complimentary trick-or-treat bags will be provided.

CANDY GIVEN TO CHILDREN CAN CONTAIN PEANUTS AND/OR PROCESSED IN PLANTS THAT ALSO PROCESS PEANUTS. PLEASE CHECK FOR ALLERGY CONCERNS BEFORE ALLOWING CHILDREN TO CONSUME. NO REFUNDS! NO PETS ALLOWED ON THE TRAIL.

If you are interested in sponsoring a scene for this event, please contact Joseph Paugh at 302-744-2486 or Joseph.paugh@kentcountyde.gov.

Kent County Parks & Recreation with Kent County Public Library

Bring Your Own
Chairs AND Your Favorite
Movie Snacks

Family Movie Night

All Movies Start at Dusk

**FREE
EVENT**



ADMIT ONE



ADMIT ONE



ADMIT ONE

Friday, October 3, 2025

Lilo & Stitch

Friday, October 17, 2025

MOANA 2

Friday, October 24, 2025

INSIDE OUT 2

For more information, check our Facebook Page
Kent County Recreation Center, 1683 New Burton Rd. Dover DE 19904



REGISTRATION PROCEDURES

Registration will be accepted through mail & in-person at 1683 New Burton Rd., Dover, 19904 or on-line on a first come, first served basis. **NO PHONE IN REGISTRATION WILL BE ACCEPTED.** Cost of activity must be paid in full when registering except when stated differently. Please follow registration procedures listed below.

Online Registration

Online Registration catalog can be accessed via secure.recl.com/DE/kent-county-de/catalog.

MasterCard, Visa and Discover **Card payments are processed through Authorize.net (which will read Kent County Levy Court on statement)**; however, refunds must be processed through Kent County Parks and Recreation; allow up to 2 weeks for processing. All other refund policies apply.

Credit Card Use Policy

Kent County Parks and Recreation cares about the safety of your credit card information. We will no longer accept mailed or phoned in credit card payments. Credit card payments (Visa, MasterCard, Discover) can be made via our online registration catalog (CivicRec). Kent County Parks and Recreation can only accept credit card payment by authorized account holder as displayed on the card.

Program Accommodations

The Kent County Parks and Recreation invites individuals to enjoy our programs, parks, and facilities. It is the policy of the Kent County Levy Court that all programs be accessible to all individuals as provided in Section 504 of the Rehabilitation Act of 1973. If you or the person(s) you are registering need modification for your program of interest, please contact Mike Rigby at 302-744-2495 or email at michael.rigby@KentCountyDE.gov before registering to discuss this matter.

Text Message Notification

Through our registration software vendor, CivicRec, we have the capabilities of sending text message notifications directly to your mobile phone. The text message notification system would only be used for the program you are currently participating in and relate only to important messages such as cancellations, changes to schedule, or other necessary updates. In order to receive the text message notifications, you must submit your mobile carrier name when signing up for an account. If you have any questions regarding this helpful program, please call our office.

Refund Policy

Registration fees for recreation programs/activities must be paid in advance and shall be refunded in full to the payer of record if the County cancels the program/activity. If a participant cancels his/her participation in a program at least **five (5) days** prior to the first scheduled day, a full refund shall be paid less a **\$5** processing fee pursuant to County ordinance. Refunds will not be given for any other reason.

General Information

- Classes and activities are subject to cancellation for any reasonable cause.
- For weather and last minute cancellation information, please view our website at kentcountyde.gov/home and [Facebook.com/KentCountyParksandRec](https://www.facebook.com/KentCountyParksandRec). Timely program cancellation notifications will be done by email or text notification from Staff.
- Please make sure that the instructor is present before dropping your child off at a program.
- Arrive to pick up your child at least five minutes before the program's scheduled closing. Failure to pick up your child on time may result in expulsion from the program.
- A child may be expelled from a program with no refund after notifying parent of disciplinary problems.
- The Department may photograph programs and participants for publicity purposes, such as the brochure, Facebook, twitter, etc.
- The Department has the right to adjust any of the program details in the brochure including fees, locations, instructors, times, days and starting dates.

Waiver and Release of Liability and Indemnity Agreement

I hereby acknowledge that in using the facilities, programs and equipment of Kent County Parks and Recreation, I do so entirely at my own risk and I assume the risk of any injury and/or damage while engaging in any physical exercise or activity or use of any facility on the premises. This assumption of the risk includes, without limitation, my use of the gymnasium, athletic courts, lobby, hallways, athletic fields, parks, sidewalk, parking lot, seating, or any equipment in the facility/park. I further agree to assume the risk in participating in any activity, class, program, instruction, or any event sponsored by Kent County Parks and Recreation (Kent County Levy Court).

By executing this Agreement, I HEREBY WAIVE, RELEASE AND FOREVER DISCHARGE, Kent County Levy Court and its past, present and future administrators, partners, employees, insureds, assigns, agents, and representatives in their personal and professional capacities (collectively "Kent County Parks and Recreation"), from all claims, demands, injuries, damages, actions or causes of action, and from all acts of active or passive negligence on the part of such entity, its servants, agents, or employees of any nature whatsoever, including attorneys' fees and costs arising out of or connection with the aforementioned activities. I further agree to indemnify and hold harmless Kent County Levy Court from any claims, demands, injuries, damages, actions or causes of action, loss, liability, damage or cost which Kent County Levy Court may incur due to my presence at or use of the facility. I further agree that the foregoing warranty, waiver and indemnity agreement is intended to be as broad and inclusive as permitted by the law of the State of Delaware and that if any portion is deemed to be invalid, it is expressly agreed that the remaining terms shall remain in full legal force and effect.

KENT COUNTY PARKS AND RECREATION - ACTIVITY REGISTRATION FORM

PLEASE PRINT AND FILL OUT COMPLETELY

Important: Registration waiver must be signed by participant. If participant is under 18, parent or guardian must sign.

Mail To: Kent County Parks and Recreation, 1683 New Burton Rd, Dover, DE 19904

RECEIPTS REQUESTED BY: EMAIL, OFFICE PICK UP, OR INCLUDE A SELF ADDRESSED STAMPED ENVELOPE WITH YOUR REGISTRATION

Payee Name (First, Last)														
Street Address														
City					State		Zip							
E-mail														
Home Phone					-			Mobile Phone			-			

Registration procedures, see page 18.

ACTIVITY CODE	ACTIVITY NAME	FIRST	PARTICIPANT'S NAME LAST	SEX	T-SHIRT SIZE	BIRTH DATE	FEE
Credit Card Payments are processed through Authorize.net and will read Kent County Levy Court on Statement.							SUB TOTAL

Credit Card Payments are processed through Authorize.net and will read Kent County Levy Court on Statement.

FORM OF PAYMENT		CREDIT CARD PAYMENT	Card Type	CARD HOLDER'S NAME (please print)															
1. CASH			<div style="background-color: black; width: 20px; height: 15px; margin: 0 auto;"></div> <div style="background-color: white; width: 20px; height: 15px; margin: 0 auto;"></div>	<div style="border: 1px solid black; width: 100%; height: 100%; background-color: #cccccc;"></div>															
2. CHECK #																			
3. CREDIT CARD																			
4. CREDIT ON ACCT																			
5. MONEY ORDER																			

WAIVER AND RELEASE OF LIABILITY AND INDEMNITY AGREEMENT

WAIVER AND RELEASE OF LIABILITY AND INDEMNITY AGREEMENT

I ACKNOWLEDGE THAT I HAVE CAREFULLY READ THE FULL AGREEMENT ON PAGE 18 OF THIS BROCHURE AND/OR THE COUNTY WEBSITE, AND FULLY UNDERSTAND THAT IT IS A RELEASE OF LIABILITY AND EXPRESS ASSUMPTION OF RISK AND INDEMNIFICATION. I AM AWARE AND AGREE THAT BY EXECUTING THIS WAIVER AND RELEASE, I AM GIVING UP THE RIGHT TO BRING LEGAL ACTION OR ASSERT A CLAIM AGAINST KENT COUNTY LEVY COURT FOR ITS NEGLIGENCE AND/OR FOR ANY DEFECTIVE PRODUCT THAT MAY BE IN THE FACILITY OR ON ITS PREMISES. BY SIGNING BELOW, I CERTIFY THAT I HAVE READ AND VOLUNTARILY SIGNED THIS AGREEMENT AND THAT NO ORAL REPRESENTATIONS, STATEMENTS OR INDUCEMENTS APART FROM THIS FOREGOING AGREEMENT HAVE BEEN MADE. PARENT OR LEGAL GUARDIAN MUST SIGN FOR ANY CHILD UNDER 18 YEARS OLD ENTERING A PROGRAM.

Signed:

Dated:

PAVILION USE GUIDELINES

Pavilions are intended for general public use with the following restrictions:

1. No individual or group may hold, reserve, rope off, or otherwise take up more space/tables than needed AT THE TIME OF OCCUPATION.
2. No individual or group may require current users to leave/vacate the pavilion.
3. Decorations (balloons, table cloth, streamers, signs, etc.) for any gathering are prohibited.
4. Any Kent County Co-sponsored Event will be posted with specific date of event for public notice prior to the event.
5. All park facilities are "carry-in, carry-out" facilities. Please remove all trash upon your departure.
6. Amplified music (boom boxes, DJ services, PA systems, etc.) are prohibited.

For specific park rules, please call the Parks and Recreation Office at 302-744-2495.

DROP IN PUNCH CARD

All drop-in activities at the Kent County Recreation Center require a valid "Drop-In Punch Card" to participate. The \$20 punch card is good for 10 single drop-in activity sessions (\$2 per session) such as basketball, pickleball, soccer, volleyball, etc. (Refer to posted schedule on the website, Facebook and Office for times.) If you are pre-registered for a fee based program you do not need a drop-in punch card for those programs.

HOW TO PURCHASE Punch Cards may be purchased in person at the Kent County Recreation Center:

Regular Business Hours – **Monday through Friday, 8:00 a.m. to 5:00 p.m. using Cash or Credit Card ONLY.**

Non Business Hours – **Monday through Friday after 5:00 p.m. and Weekends – subject to the following restriction; limit of 2 per purchaser, CASH ONLY (no bills greater than \$20 will be accepted.)**

Registration form must be filled out completely with each purchase

ADDITIONAL INFORMATION Cards are not available for online purchase, no refunds or exchanges, lost or stolen cards will not be replaced. You may use your card for guests or groups, as long as there are enough punches available.



Kent County Parks & Recreation Replacement of Brecknock Playground

Built in 1996, Picadilly Castle playground has been in-service for nearly 30 years. KCPR understands the importance of this play structure and has prepared a process to design, budget and construct a new playground at Brecknock County Park. As we work to incorporate public input we would encourage you to scan the QR code to complete our survey. Survey ends September 1st, 2025



ONLINE
SURVEY



Kent County Public Library

Fall 2025

PROGRAMS & EVENTS

Photo by Raphael Senzamici

Division of Library Services

Serving Kent County with Pride

Kent County Public Library

497 S. Red Haven Lane, Dover | 302-744-1919

FALL 2025 PROGRAMS & EVENTS

All programs are free and open to the public and will be held at the Library, located at 497 South Red Haven Lane, Dover unless stated differently. **Preregistration is required as noted.** You can register online at www.tinyurl.com/KCPLcalendar or by calling (302) 744-1919. (Parent or other responsible adult must be present in the library, including during programs, for any child/youth under the age of 16.)

Please Note:

The Library reserves the right to adjust program dates, times, enrollment maximums and program/ event cancellations. Please be courteous! Call the library if you must cancel (302-744-1919). Penalties may apply for no-shows, including restriction/exclusion from future sign-ups.

It is the policy of the Kent County Levy Court that all programs be accessible to all qualified handicapped individuals as provided in Section 504 of the Rehabilitation Act of 1973. If you or the person(s) you are registering need reasonable accommodation for your program of interest, please contact the Kent County Public Library before registering to discuss the matter with the program coordinator(s).

The Library may photograph programs and participants for publicity purposes, including posting to social media sites.

SEPTEMBER IS LIBRARY CARD SIGN-UP MONTH!

Sign-up for a new library card or renew your current card. Our goal is 10 new registrations or renewals each day in September! (Proof of Delaware residency and a photo ID required. Parent or legal guardian must apply for children under age 18.)



ALL AGES PROGRAMS

ALL IN A DAY'S WORK

Monday, September 1

How many people does it take to create a virtual image? We know how much time it will take: Check the library's Facebook page ("KCPLibrary") for a link to the virtual sticker board picture that we challenge our readers to complete in just ONE day!

INTERNATIONAL DOT DAY

Monday, September 15

Bring your favorite gel pen, fine marker, or pencil to complete a special "One Color DOTS" project – a new type of relaxation and stress relief coloring technique. While you are here, decorate a dot for the library's International Dot Day display!

SOCKTOBER

October 1 – 31

KCPL is hosting a Sock Drive, to benefit Code Purple, to collect socks for unhoused individuals living in the Kent County area. Attend a special Socktober Story!Time on Thursday, October 9 at 10 a.m., and drop off packages of new socks in the collection bin.

CREATIVITY STATION: "PUMPKIN" BOOK CHARACTER DECORATING

Saturday, October 4, 1:30–4:30pm

No carving – just decorating. Embellish a paper pumpkin to represent your favorite book character. Finished artwork will be displayed at the library through October 24. Pick up dates are October 25 & 26 from 1–5 p.m.

LOCAL AUTHORS SHOWCASE

Sunday, November 2, 2:00–4:00pm

Meet local and regional authors and illustrators to learn more about their work, purchase copies of their books, and support our efforts to encourage creativity and talent! Check Facebook ("KCPLibrary") to find out who the 2025 featured author will be!

CREATIVITY STATION: FIBONACCI DAY

Sunday, November 23

Leonardo Fibonacci invented a pattern of counting that continues to influence math and technology today. Once you discover the sequence, it will show up everywhere from DNA to hurricanes. Celebrate by completing a Spirogyphics picture – a meditative challenge that reveals hidden images within intricate spiral patterns.

YOUTH PROGRAMS

All programs are free and open to the public, unless stated differently. **Preregistration is required as noted.** Please respect the age ranges for programs. Please call (302) 744-1919 or stop by the circulation desk to register. You can also register online at www.tinyurl.com/KCPLcalendar (Parent or other responsible adult must be present in the library, including during programs, for any child/youth under the age of 16.)

STORY! TIME

Fridays at 10:00am

(No program November 28.)

Miss Robin has a wonderful line-up of stories, songs, activities, and crafts to explore! Check out the weekly theme on the library Facebook page at "KCPLibrary" Suitable for preschool/early elementary. Groups of 5 or more, please call ahead (302) 744-1919.

AFTER SCHOOL CONNECTION

Tuesdays at 4:00pm

Designed for elementary-age children. Keep up with your child's natural curiosity. Not intended to supply classroom/daycare groups. Limited space; **preregistration for each session is required.**

September 9 - International Dot Day: Wear your favorite polka-dot outfit and enjoy some dotty stories before decorating a dot for the library's International Dot Day display.

October 14 - Is Pumpkin a Fruit? Explore the scientific method as we explore pumpkins! Make a "pumpkin catapult."

November 25 - Talking "Turkey" Learn more about the bird Benjamin Franklin nominated as the United States' national emblem, enjoy a related craft - and learn a little about the country of Turkey, too!

PAWS FOR READING

Thursdays, Sept 4 & 18, Oct 2 & 16, Nov 6 & 20 at 6:30pm

Bring your child to the library to read aloud for 10 minutes to a friendly therapy dog provided by PAWS for People. Studies show that reading aloud to animals can actually help children improve their reading skills. This is a great opportunity for beginner, reluctant and even beginning English learners to practice in a non-judgmental environment with a book of their choice. Teens and adults are welcome to read too! One reader per dog, per 10-minute reading session. Complete five sessions for a special prize! First come, first served.

DELAWARE ANIME SOCIETY

Saturdays, Sept 13, Oct 11, Nov 8, 1:00-4:00pm

(No meeting in December.)

Ages 13 and up. Delaware Anime Society is for those with an interest in Japanese anime (animation), manga (graphic novels), pop culture, music, cosplay and gaming to meet. Meetings include screenings of various anime titles and time for video/table games.

PLAY LOTERIA

Sunday, September 21, 2:00-3:00pm

We're all set for a fantastic family game afternoon! Loteria ("Mexican Bingo") is a great way to enhance your Spanish skills - and have fun at the same time! September 15-October 15 is Hispanic Heritage Month

"PUT A SPELL ON YOU" MOVIE SCREENINGS

Saturdays, October 4, 11, 18, 25 at 3:00pm

Enjoy FREE spell-binding, family-friendly movies during October. Visit our online calendar at <https://www.tinyurl.com/KCPLcalendar> for the complete line-up and to register. A minimum of 10 preregistered participants are required by the Wednesday before each scheduled date, otherwise that week's screening will be canceled.

KIDS COSTUME GIVEAWAY

Sunday, October 12, 1:30 - 4:30pm

Kent County Public Library will host a children's costume giveaway. The event is free and open to parents and their children. All costumes are donations, and will be given away "as is," and cannot be tried on. Children must be present with their parent/legal guardian in order to select a costume. Limit of one costume per child (while supplies last).

Donations of clean, gently used costumes will be accepted in-person at the library during normal business hours beginning October 1 through October 10 (no wigs or masks, please). We cannot accept donations the day of the giveaway.

ALICE'S UN-BIRTHDAY

Saturday, November 8, 10:00-11:30am

All ages. You don't need to wait for your birthday to throw an un-birthday party (that's the whole point of un-birthday parties, actually). Participants will enjoy popcorn, lemonade, and other treats while we watch the animated classic Disney film and try our hand at some Wonderland-themed activities. Obviously, Mad Hatter hats and Alice-in-Wonderland-inspired costumes/clothing are encouraged. **Preregistration required - no walk-ins.** (Program held before normal library business hours. Only those who have preregistered permitted.)

BOOK CHARACTER SCAVENGER HUNT

Children's Book Week: November 3 - 9

Kids! See if you can find all the book characters hidden around the Children's Room and win a small prize!

DOWN THE RABBIT HOLE: STICKY WICKET

Saturday, November 15, 9:00am - 12:00pm

Ages 6 - adult (group must include at least 1 child). Experience the whimsical world of Alice in Wonderland as you maneuver your way through nine magical obstacles in a croquet course inspired by the book. Maximum of 4 players per group. **Tee-time reservations (preregistration) required - no walk-ins.** (Program held before normal library business hours. Only those who have preregistered permitted.)

EXCERPTS FROM *THE NUTCRACKER*

Sunday, November 30 at 2:00pm

Meet the characters from the Ballet Theatre of Dover's beloved holiday classic as dancers share excerpts from the ballet to live narration. Take-and-make craft will be available for all attendees. All ages. Limited seating; first come, first served.

ADULT PROGRAMS

All programs are free and open to the public, unless stated differently. **Preregistration is required as noted.** Please call (302) 744-1919 or stop by the circulation desk to register. You can also register online at www.tinyurl.com/KCPLcalendar

FREE FOR ALL CONCERTS

Fridays at 6:30pm

Enjoy an evening of free live music at the library. Limited seating; first come, first served.

October 17 – The First State Brass Quartet (classical)

November 7 – 287 Delaware Army National Guard Band

December 19 – Joy Slavens, Harpist (seasonal)

KCPL BOOK DISCUSSION GROUPS

Ages 16 and up. Join one – or more – of our lively discussion groups. KCPL will have limited copies of each group's selected title available for checkout (while supplies last). Please call the Library at (302) 744-1919 to reserve a copy. You can also request copies through the Delaware Libraries online catalog at www.lib.de.us with your library card and 4-digit PIN. Many of the titles are also available in large print, e-book and audiobook formats.

ARTS & LETTER BOOK CLUB

Wednesdays, Sept 3, Oct 8, Nov 5, Dec 3 at 12:30pm

Explore the arts and humanities through literature. See circulation desk to check out each month's selection!

BOOKED FOR LUNCH

Mondays, Sept 8, Oct 6, Nov 3, Dec 1 at 12:30pm

Pack a brown bag lunch, bring the book you're reading or recently read along, and share your response to the book(s) with the group – no assigned titles, but your TBR list is sure to increase!

NEW! COZY MYSTERY BOOK CLUB

Wednesdays, Sept 17, Oct 15, Nov 5 at 6:30pm

This group meets each month to discuss the first title in a cozy mystery series. September 17: *The Thursday Murder Club* (Richard Osman); October 15: *Buried in a Good Book* (Tamara Berry); November 5: *Death by Bubble Tea* (Jennifer J. Chow). See circulation desk to sign out each month's selection!

WELL-READ BOOK CLUB

Thursdays, Sept 18, Oct 9, Nov 13, Dec 18 at 6:30pm

Read across a broad spectrum of literature both old and new, including contemporary or classic novels, plays, poetry and short story anthologies. See circulation desk to check out each month's selection!

MEDICARE 101

Wednesdays, Sept 10 at 11:00am OR Oct 8 at 1:00pm

There will be changes to Medicare for the 2026 Annual Enrollment period. Tawanna Croom, licensed insurance broker will help participants understand what to expect. Limited seating; **preregistration required.**

BREATH AND BALANCE: MINDFULNESS FOR YOU AND YOUR SUPPORT CIRCLE

Thursday, September 11 at 6:00pm

Designed for individuals with developmental disabilities such as Autism and ADHD, this engaging and informative workshop will focus on the power of mindfulness for reducing stress and anxiety. Session will include discussion of mindfulness techniques and their benefits, followed by a guided mindfulness exercise. Family members, caregivers and other interested members of the community are also welcome. Limited space; **preregistration required.** Speaker: Amy Griffin, Ph.D., Associate Professor, Department of Psychological and Brain Sciences, University of Delaware.

PLENTY OF PINK MOVIE SCREENINGS

Mondays at 6:00pm

Ages 16 and up. Join us for free screenings of movies with a pink theme. Call (302) 744-1919 to confirm each week's movie title. A minimum of 10 people must be preregistered by the Thursday before each scheduled date for program to take place.

September 29: M---- G----- (2004) The timeless line "on Wednesdays we wear pink" makes this film an obvious pick to kick off this series... (PG-13; 1hr, 37 min)

October 6: P----- I- P--- (1986) A "Brat Pack" cult classic rom-com starring Molly Ringwald, Andrew McCarthy, and Jon Cryer. (PG-13; 1hr, 37 min)

October 13: T-P----- P----- (1963) Come for the animated trailer, stay to watch bumbling Inspector Clouseau solve the heist of the priceless diamond known as "The Pink Panther." (NR; 1 hr, 55 min)

October 20: B----- (2023) You didn't think we'd have a pink series without Barbie, did you? (PG-13; 1hr, 54 min)

October 27: L----- B----- (2001) Meet Elle Wood (Reese Witherspoon). She's a law student with a pink wardrobe and with a heart of gold...and a mane to match! (PG-13; 1hr, 36 min)

November 3: G----- (1978) Is good girl Sandy too pure to be pink? Stars Olivia Newton-John and John Travolta (PG; 1hr, 50 min)

DRAWING DANGLES FOR ADULTS

Sunday, September 14 2:00pm

Ages 18 and up. Explore the art of drawing "dangles" – a playful new art form for people who love journaling, coloring, tangles, lettering, and being creative. Must have 15 pre-registered participants for program to take place.

AARP SMART DRIVERTEK

Saturday, Sept 27 2:00pm OR Thursday, Oct 23 at 6:00pm

Get smart about new vehicle technology! Join a FREE 90-minute Smart DriverTEK Workshop to learn about technology in your automobile that may help you drive safely and more confidently in your current or future vehicle. Registration for this class is through AARP. Sign up now via email to mrp777@gmail.com, or by calling (877) 805-0458.

AARP DRIVER SAFETY CLASS: REFRESHER

Saturday, Sept 20, 1:00–5:00pm OR Thursday, Oct 16, 10:00am – 2:00pm

Register with AARP (<https://www.aarp.org/auto/driver-safety/locations/>) and scroll down or call 877-805-0458) for a 4-hour refresher class for drivers who have taken the defensive driving class 3 years ago. There is a course material fee of \$20 for AARP members/\$25 for non-AARP members – payable to AARP.) Course offers auto insurance discount, as well as future 3-point credit over 3 years for Delaware drivers.

AARP DRIVER SAFETY CLASS: BASIC

Tuesday, Sept 23 OR Saturday, Oct 4, 10:00am – 4:00pm

Register with AARP (<https://www.aarp.org/auto/driver-safety/locations/>) and scroll down or call 877-805-0458) for a 6-hour class for drivers who have not taken the defensive driving class in the past 3 years. There is a course material fee of \$20 for AARP members/\$25 for non-AARP members – payable to AARP). Course offers auto insurance discount, as well as future 3-point credit over 3 years for Delaware drivers.

SPOTLIGHT ON DELAWARE HISTORY

Wednesdays at 6:30pm

Ages 16 and up. The “Diamond” State may be small, but it is packed with fascinating stories from history. Join us for a unique look at the history of the First State. Limited seating; **preregistration for each session is required.**

September 24: George Williams of *Runamuck Decoys* discusses the history and craft of cork and wood hunting decoys.

October 22: Dana Niemeyer of the Delaware Public Archives shares four unique spooky stories directly from their vaults using primary source documents.

November 4: *Someone Must Wash the Dishes: An Anti-Suffrage Satire* performed by Michele LaRue (*Please note that this program is on a Tuesday)

November 12: Emily Whaley of Delaware Historical & Cultural Affairs offers an overview on how to submit a house or property for listing on the National Register of Historic Places.

ARE YOU MY ANCESTOR?

Wednesdays, Sept 24, Oct 1, 8, & 15 (4 sessions) 6:30–7:30pm

Ages 16 and up. Genealogy connects us with our past while building a legacy for future generations. Find out how to uncover family stories and history with Tom Mercer of the Downstate Delaware Genealogical Society. Participants should plan to attend all 4 sessions. Limited space; **preregistration is required – no walk-ins.**

INTRODUCTION TO CHAIR YOGA

Thursdays, Sept 11, Oct 9, Nov 13, Dec 11, 10:00–11:30am

Ages 16 and up. Learn the basics of this modified form of yoga practiced while sitting comfortably in a chair. Improve flexibility, strength, and balance while managing stress and relieving anxiety. **Preregistration for each session is required.** Seek medical advice from a healthcare professional before starting a new exercise program.

13 POILOTS AND 7 MISS MARPLES

Sunday, October 5, 2:00–3:30pm

Ages 16 and up. Because of her ability to craft suspenseful, well-written mysteries with memorable characters and surprising twists, Agatha Christie's gripping detective novels have frequently been adapted for the silver screen and television. Fans of Miss Marple, Hercule Poirot, or Netflix's *The Seven Dials Mystery* will want to preregister to reserve their seats for Teresa Peschel's program, which includes extensive film clips. Limited seating; **preregistration required.**

OCTOBER STAFF PICK FILM

Tuesdays, October 7 at 6:30pm

Ages 16 and up. Join us for a screening of a classic “ghostly” film starring Gene Tierney as a young widow who moves to a secluded house off the Gulf of Whitecliff where she encounters the ghost of its former tenant (Rex Harrison). (1942; NR; 1hr, 44 min). A minimum of 10 people must preregister by October 1 in order for the program to take place.

INTRODUCTION TO GUIDED MEDITATION

Sunday, Oct 19, Nov 16, Dec 21 at 2:00pm

Ages 16 and up. Meditation is a thought-free awareness involving a calm body and quiet mind. Open to all levels of experience interested in exploring visualization/guided imagery. Bring a mat or blanket and an open mind. **Preregistration for each session is required – no walk-ins.** (Program held after normal library business hours. Only those who have preregistered permitted.)

MULTI-FACETED ALICE

Wednesday, November 19 at 6:30pm

Ages 16 and up. *Alice in Wonderland* is a captivating story with whimsical characters, playful use of language, in a surreal world that sparks imagination. Our speaker explores several of its many themes – curiosity, identity, the absurdity of life – while enjoying the novel's humorous and nonsensical nature. Limited space; **preregistration required.**

Please Note:

The Library and Mobile Library will be closed September 1, November 11, 27 & 28.

The Mobile Library will be off-road the week of Thanksgiving.

Mobile Library stops are suspended December through February.

A SEASON FOR AUSTEN

Join us for programs that highlight the time period, traditions, and life of beloved author Jane Austen.

AUSTEN PROMANADE WITH THE DOVER ENGLISH COUNTRY DANCERS

Sunday, December 7 at 2:00pm

In all of her novels, Jane Austen uses dancing as a "certain step toward falling in love" (*Pride and Prejudice*). Enjoy a demonstration of traditional dancing by the Dover English Country Dancers. Limited seating; first come, first served.

JANE AUSTEN AT 250

Sunday, December 14 at 2:00pm

Ages 16 and up. Historical presenter Trish Chambers explores the continued appeal of Jane Austen to readers who immerse themselves in the period of the British Regency era through costume, manners, food, and social gatherings. Performed in period costume. Limited seating; **preregistration required.**

POLITE SOCIETY: TEA AND TABLE GAMES

Tuesday, December 16 at 6:00pm

Ages 16 and up. Literature lovers and game enthusiasts are invited to engage in a fun and social experience (without requiring prior knowledge of Austen's novels) by learning and playing Jane Austen-themed card and board games. Limited seating; **preregistration required.**



"LINUS" THE MOBILE LIBRARY: THE FRIENDLY LIBRARY ON THE HIGHWAY

The Kent County Division of Libraries operates a mobile library ("LINUS") that makes weekly stops throughout Kent County. Register for a library card, sign-up for programs, borrow materials, use the unit's free Wi-Fi hotspot, and more.

FOLLOW LINUS ON FACEBOOK

www.facebook.com/groups/1348383312440737

TWO GENTLEMEN OF VERONA

Saturday, Oct 11 at 2:00pm

Delaware Shakespeare performs *Two Gentlemen of Verona*, the story of friends Proteus and Valentine. When their romantic interests overlap, the two put their friendship to the test as they navigate the foolish lengths we often go to for love.

FRIENDS OF KENT COUNTY PUBLIC LIBRARY

DONATING

Boxed donations of books and DVD/blu-ray discs in good, usable condition are accepted during the **first five days of each month – February through November only**, during the Library's normal hours of operation. Limit of 10 banker boxes, or size equivalent, per family/per month. Please do not place donations in book drop or outside the building or mobile unit. We appreciate your consideration and generosity.

NACHOS & NOVELS

Sunday, September 28, 1:00–2:00pm

(This event is open to Friends of Kent County Public Library members only.)

Join us for a Friends-only "Book Tasting" at Kent County Public Library during your lunch break! You'll have the opportunity to sample several books from the library's collection and enjoy some complimentary nachos while meeting other KCPL/Mobile Library supporters. **Books will be available for checkout!*

HOLIDAY CRAFT/VENDOR BAZAAR AND BOOK SALE

Saturday, November 22, 1:00–4:30pm

The Friends of Kent County Public Library will host their second Holiday Craft/Vendor Bazaar and Book Sale. Browse craft collections, a curated book sale, holiday treats, raffles, door prizes and more! Limited vendor space is available. Interested vendors can email librarykentco@gmail.com for an application. *This is the Friends official email for this event and all questions and applications will be through this email only.*

MOBILE LIBRARY SCHEDULE

Effective September 1 – November 26, 2025

Monday		"Lobby Drops" various locations
	9:30–10:30am	Byler's (Harrington)
Tuesday	11:30am–12:30pm	Frederica Senior Center
	2:00–3:00pm	Byler's (Dover)
	9:00–9:45am	Kent County Recreation Center
Wednesday	10:15–11:00am	Kent County Administration Building
	11:30am–12:30pm	Harmony Senior Living
	9:00–11:00am	Calvary Christian Academy
Thursday	12:00–2:00pm	CCA Secondary School
	3:30–4:30pm	Tre Sorelle
	10:00–11:00am	Spring Meadow
Friday	12:00–1:00pm	Westminister
	3:00–4:00pm	Dover Airforce Base Playground



KENT COUNTY LEVY COURT

Serving Kent County with Pride



Get In Touch

Kent County Levy Court
Kent County Levy Court
Parks & Recreation
Parks & Recreation
Parks & Recreation
Library Services
Digital Mailing List

facebook.com/KCLevyCourt

x.com/KCLevyCourt

facebook.com/KentCountyParksAndRec

instagram.com/kcparksrec

youtube.com/@kentparksrec1498

facebook.com/KCPLibrary

public.govdelivery.com/accounts/DEKENTCO/subscriber/new